

## **RESOLUTION NO. 25-04**

### **A RESOLUTION OF THE TOWN COUNCIL OF THE TOWN OF RIDGWAY, COLORADO, AMENDING THE TOWN OF RIDGWAY STANDARD SPECIFICATION AND TYPICAL DRAWINGS FOR INFRASTRUCTURE CONSTRUCTION**

**WHEREAS**, the Town of Ridgway's set of engineering design standards is formally referred to as "Town of Ridgway Standard Specification and Typical Drawings for Infrastructure Construction"; and

**WHEREAS**, the Town Council adopted by Resolution No. 01-03 on April 11, 2001 the Town of Ridgway Standard Specifications, General Requirements and Typical Drawings for Infrastructure dated 1992 and updated in 1995; and

**WHEREAS**, subsequently the same was amended by Resolution No. 01-04 on July 11, 2001, by Resolution No. 06-03 on June 14, 2006, by Resolution No. 20-06 on June 10, 2020, by Resolution No. 22-08 on September 14, 2022, by Resolution No. 22-12 on December 14, 2022, and again by Resolution No. 24-04 on January 10, 2024; and

**WHEREAS**, the Town Engineer has prepared changes and additions to said standard specification and typical drawings; and

**WHEREAS**, the purpose of these standards is to provide minimum standards to safeguard life, health, property, and public welfare by regulating and controlling the design, construction, quality of materials, use, location, and maintenance of all public improvements and private improvements of common ownership including, but not limited to, sanitary sewer systems, water supply systems, storm drainage systems, wire utilities, streets, pedestrian facilities, open space, parking lots, and appurtenances thereto; and

**WHEREAS**, the purpose of these standards is also to ensure that the Town receives public facilities which are constructed with the care and materials such that the facility meets or exceeds the normal service life requirements for similar installations; and

**WHEREAS**, these standards are intended to ensure that when said facilities are transferred to the Town's ownership that they will be free from all defects and in suitable working order to provide the service capabilities anticipated with such a facility while protecting public and private interests.

**NOW THEREFORE, BE IT RESOLVED** by the Town Council of the Town of Ridgway, Colorado that the attached document, labeled as Exhibit A and titled "Town of Ridgway Standard Specification and Typical Drawings for Infrastructure Construction, Addendum #1 – February 12, 2025", shall be added to, and shall amend the Town of Ridgway Standard Specification and Typical Drawings for Infrastructure Construction dated January 2024.

ADOPTED AND APPROVED this \_\_\_\_\_ day of February, 2025.

\_\_\_\_\_  
John Clark, Mayor

ATTEST:

\_\_\_\_\_  
Pam Kraft, Town Clerk

**TOWN OF RIDGWAY STANDARD SPECIFICATION AND TYPICAL DRAWINGS  
FOR INFRASTRUCTURE CONSTRUCTION**

**ADDENDUM #1 – FEBRUARY 12, 2025**

- Section 03250 – Streets – Page 03250 – 6: Removed the bottom 2/3;s of the table to remove redundancy in testing requirements.
- Section 03250 – Streets – Page 03250 – 20: Added new subsection 27 Pavement Markings. That reads:

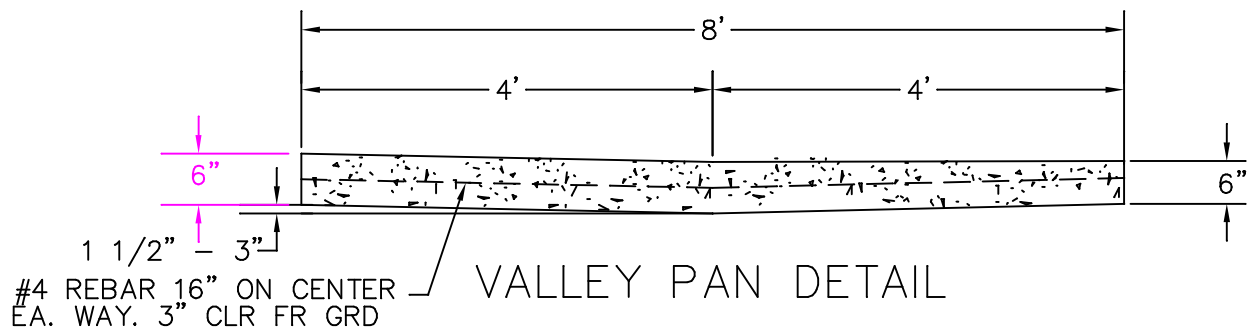
Striping – Material for striping shall be a modified epoxy meeting the requirement of CDOT 713.17 on the CDOT approved product list. Striping shall be completed in accordance with the approved design drawings, CDOT section 627.05 and other applicable CDOT standards and manufacturer’s recommendations.

Words and Symbols – Material for markings other than striping shall be from Preform Plastic Type I (permanent) meeting the requirements of CDOT 713.13 and listed on the CDOT approved product list. Work shall be completed in accordance with the approved design drawings, applicable CDOT standards including but not limited to sections 627.08, and manufacturer’s recommendations.

Retroreflectivity of pavement markings shall be tested in accordance with CDOT 105.03 (a). If retroreflectivity reading in less than 175, the epoxy shall be removed and replaced. Retroreflectivity of all materials shall meet the requirements of CDOT 713 and other relevant CDOT standards and applied consistent with CDOT standards and manufacturer’s recommendations.

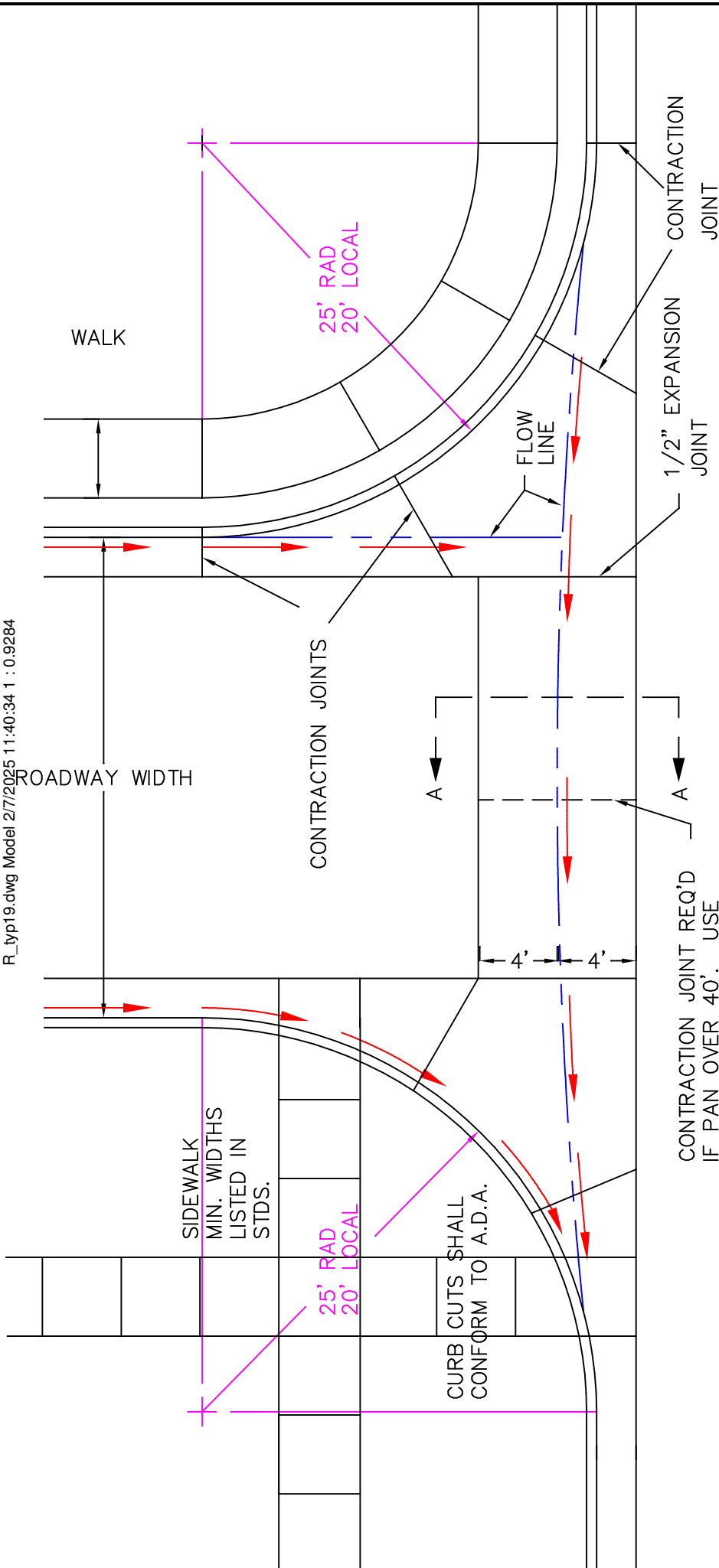
- Typical Drawing – Valley Pan Detail – Modify the reinforcement from welded wire to #4 rebar on 16” center.
- Typical Drawing - Intersection Gutters Detail - Modify the reinforcement from welded wire to #4 rebar on 16” center.

R\_typ19.dwg Model 2/7/2025 11:48:35 1 : 0.9302

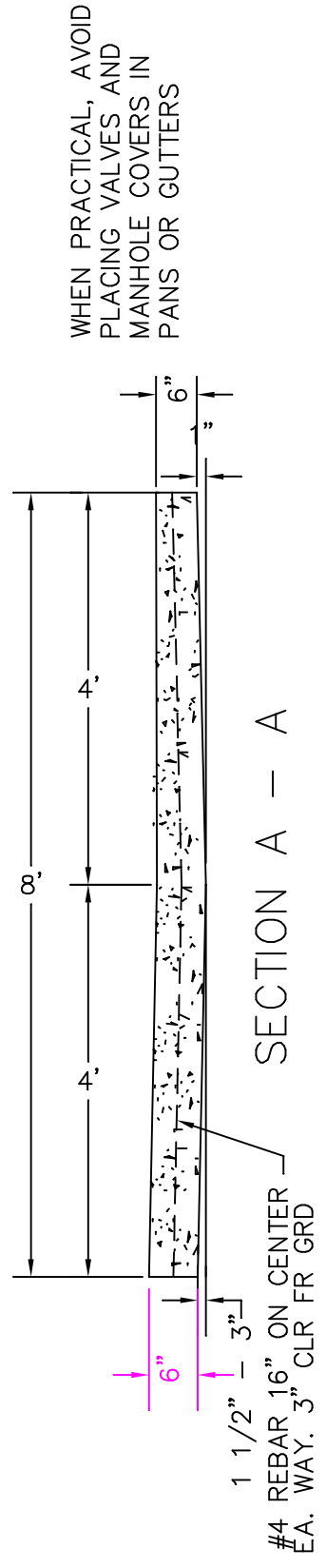


WHEN PRACTICAL, AVOID  
PLACING VALVES AND  
MANHOLE COVERS IN  
PANS OR GUTTERS

CHK:	TOWN OF RIDGWAY
DATE: 2/25	CONSOLIDATED CONSULTING SERVICES PO BOX 738, DELTA, CO 81416
DRN: R_TYP	
	VALLEY PAN DETAIL



INTERSECTION GUTTER DETAILS – PLAN VIEW



CHK:	TOWN OF RIDGWAY	
DATE:	2/25	CONSOLIDATED CONSULTING SERVICES PO BOX 738, DELTA, CO 81416
DRN:	R_TYP	
INTERSECTION DETAILS		