



Ouray County Multijurisdictional Evacuation Plan

Ouray County, Colorado

Adopted by Town of Ridgway March 12, 2025, City of Ouray May 19, 2025, and Ouray County April 22, 2025

Table of Contents

Record of Changes	5
Key Acronyms.....	5
Executive Summary.....	6
Introduction	8
Purpose	8
Authority	8
Areas of Coverage	8
Plan Assumptions.....	8
Overall Assumptions	8
Transportation	9
Communications	9
Plan Maintenance	9
Community Overview	10
Demographics	11
At-risk Populations.....	12
Population Groups of Concern	13
Existing Capabilities	15
Other Available Resources	16
Identified Resources and Opportunities for Improvement	18
Emergency Evacuation Procedures	19
Decision to Activate the EEP	19
Direction and Control.....	19
Operational Phases	19
Refusal to Evacuate.....	20
Reconstitution or Event Termination	20
Shelter in Place.....	21
Expected Actions.....	22
Expected Actions.....	22
Overall Expected Actions	22
Expected Actions by Designated Representative	23

Ouray County Emergency Manager	24
Pre-event.....	24
Mid-event.....	24
Post-event	25
Ouray County Sheriff and Sheriff’s Office	25
Pre-event.....	25
Mid-event.....	25
Post-event	26
Ouray County Public Information Officer	26
Designated Representatives	26
Pre-event.....	26
Mid-Event.....	26
Post-Event	27
Ouray County Officials and Staff.....	27
City of Ouray Officials and Staff	30
Town of Ridgway Officials and Staff	32
Fire Protection Districts and Emergency Services	34
State of Colorado Departments or Agencies	35
Sheltering or other Assisting Agencies	35
Service Animals, Pets, and Livestock Sheltering	36
Second Chance Humane Society - Small Animal Operations:	37
Ouray County Fairgrounds Director - Large Animal Operations:.....	38
Fairground Needs:.....	38
Expected Actions.....	38
Abandoned Animals in Shelters.....	39
Public Information and Notifications.....	39
Designated Representatives	40
Public Information and Outreach	40
Messaging Examples	42
Education Example Language	48
Notification Example Language by Hazard Type	49
Social Media Prompt 1: Severe Weather Warning.....	49

Social Media Prompt 2: Hazardous Material Incident.....	50
Social Media Prompt 3: Active Threat Situation.....	50
Evacuation Routes	50
Routes and Maps	50
Restricted Access Areas	51
Large-Scale Events and Conditions	51
Challenges for Evacuation during 4 th of July/County Fair Events	52
Large Scale Event Specific Actions	53
Pre-event.....	53
Mid-event.....	53
Post-event	54
Evacuation Center and Shelter Information	55

Record of Changes

The most current copy of this document, including any revised pages, is available through the Ouray County Emergency Management office, County Commissioners, or other designated representatives.

Change No.	Date Entered	Posted By	Description of Change
1			
2			
3			
4			
5			

Key Acronyms

EEP	Emergency Evacuation Plan
EOC	Emergency Operations Center
IC	Incident Commander
ICS	Incident Command System
PIO	Public Information Officer

Executive Summary

Ouray County, the City of Ouray, the Town of Ridgway, and other project partners have collaboratively developed an **emergency evacuation plan** for residents, workers, and tourists within scenic Ouray County, Colorado. Evacuation Plans are designed to help protect people by providing guidance during an emergency. As the nature of every emergency cannot be known beforehand, this plan was developed with an all-hazards approach to be adaptable and flexible no matter the reason for evacuation. While wildfire is a significant and prominent concern in Colorado, other events, such as flooding or chemical spills, can prompt local officials to declare an evacuation.

You evacuate to evade the threat, not to go to a specific location!

Evacuation plans take place in several stages. It's critical to understand what stage of an evacuation your county, community, or neighborhood is in. Ouray County uses a three-phase approach called Be Ready, Get Set, Go Now!



- **Be Ready** – be aware an evacuation order may be coming due to hazardous conditions. Be prepared to evacuate by getting family and supplies together and watching local news media.
- **Get Set** – a **voluntary** evacuation order is in effect. Your family can evacuate now if you feel in danger or if it will take longer for you to evacuate, such as with children, elderly family, large domestic animals, or health/mobility concerns.
- **Go Now** – a **mandatory** evacuation order is in effect. All persons in the identified locations are at risk and need to evacuate the area immediately.

Residents and visitors to Ouray County should be aware that evacuation assistance resources are limited. If you need assistance evacuating, contact your local officials as quickly as possible. It is your responsibility to evacuate your family as quickly and safely as possible! If you choose not to evacuate, emergency responders will not be able to rescue you.

In general, evacuation routes are identified to lead people away from the danger. Designated evacuation routes include:

- North-bound towards Montrose via US Highway 550 and Ouray County Road 1
- South-bound towards Silverton via US Highway 550
- West-bound towards Placerville via CO Highway 62
- East-bound towards Cimarron/Gunnison via Ouray County Road 8

However, evacuation roads may change during an event – always follow the direction of local officials to see the safest ways away from danger.

Where to Get Information:	Evacuation Guidance:	Shelter Locations:
 Check the following locations for information about evacuation orders and status: RADIO: <ul style="list-style-type: none"> ○ KUBC (580 AM) ○ KKXK (94.1 or 99.3 FM) FACEBOOK: <ul style="list-style-type: none"> ○ @OurayCountySheriff ○ @OurayCountyAlerts ○ @OurayCountyEM ○ @OurayCountyGov ○ @OurayPD ○ @CityOfOuray ○ @TownOfRidgway INSTAGRAM: <ul style="list-style-type: none"> ○ @OurayCountySO ○ @OurayCountyGov ○ @OurayPD ○ @CityOfOuray 	 Areas or people who should plan to evacuate early: <ul style="list-style-type: none"> ○ Campgrounds and recreation areas ○ Neighborhoods with one egress road (one way in/one way out) ○ People with mobility or transportation concerns ○ Families with children or the elderly ○ Those with large animals 	 Families are welcome to take temporary shelter at: <ul style="list-style-type: none"> ○ Ouray 4-H Center ○ Ouray Community Center ○ Ouray Elks Lodge ○ Ouray Schools ○ Ridgway Schools  Pets and hobby farm animals can take temporary shelter at: <ul style="list-style-type: none"> ○ Second Chance Humane Society (small pets) ○ Ouray County Fairgrounds (large domestic animals)

Ouray County, the City of Ouray, and the Town of Ridgway are committed to protecting people and property throughout the county from disaster events. Help ensure your own safety by following safety guidance and news alerts, having a plan for your family, and being familiar with evacuation stages!

Be Ready – Get Set – Go Now!

Introduction

Purpose

Ouray County, Colorado, is charged with ensuring the safety of residents and persons visiting the county, particularly during large-scale events. This document establishes procedures to implement the Ouray County Emergency Evacuation Plan (EEP) to direct the evacuation and road closures across the county during emergency events. This plan is specific to Ouray County, Colorado. The principles and strategies outlined in this plan can be scaled and adapted to address events as needed throughout the county, such as the County Fair and 4th of July celebration.

Authority

The Ouray County Sheriff's Office and Ouray County Emergency Management serve as the primary or lead agencies for the Ouray County Emergency Evacuation Plan. C.R.S. 24-33.5-700 Colorado Disaster Emergency Act outlines the powers of local and state governments to respond to emergencies and disasters, including the authority to evacuate residents and visitors to provide for public safety. Evacuation orders of local authorities and Sheriffs are enforced by criminal sanctions, and a person disobeys an evacuation order at his or her own peril. This authority was backed by an official Attorney General Opinion on June 27, 2002.

This document is **For Official Use Only**. Portions of the Ouray County Emergency Evacuation Plan may contain information that raise personal privacy or other concerns, and those portions may be exempt from mandatory disclosure under the Freedom of Information Act (see 5 United States Code §552, 41 Code of Federal Regulations Part 105- 60). It is to be controlled, stored, handled, transmitted, distributed, and disposed of in accordance with internal security protocol and is not to be released without prior approval of the County Emergency Manager to the public or other personnel who do not have a valid need to know. The disclosure of information in this plan could compromise the security or implementation of essential actions in this plan.

Areas of Coverage

This plan evaluates emergency evacuation procedures that would impact all or parts of Ouray County, including unincorporated Ouray County, the City of Ouray, the Town of Ridgway, Log Hill Mesa Fire Protection District (LHMFPD), Ouray Fire Protection District (OFPD), Ridgway Fire Protection District (RFPD), Montrose Fire Protection District (MFPD) and other public lands. Horsefly Volunteer Wildland Fire Protection association provides first response to wildfires that start in northern Ouray County lands accessed by and from Government Springs Road.

Plan Assumptions

Overall Assumptions

- Large scale events will require state or federal assistance
- It is unlikely the entire county would require evacuation, but rather select portions of the county and/or communities may be evacuated depending on the situation
- Some individuals will resist an order to evacuate.
- Some percentage of the population automatically assigns suspicion to the motives of government agencies, particularly in regards to evacuations.

Transportation

- The primary means of evacuation for most individuals will be personal vehicles. Individuals who do not have personal vehicles may require assistance in evacuating.
- Individuals with access and functional needs or people with disabilities may require evacuation assistance and/or transportation coordination.
- There is a potential for roadways to be damaged or for traffic disruptions. This will require maximum flexibility in response.

Communications

- Residents will not have access to all available public information sources to acquire emergency information.
- Information that is available to the public may be conflicting amongst various sources and may cause credibility issues with official information sources.
- It may be difficult to locate and inform seasonal, tourist, and homeless populations, and to estimate the scope of the transportation requirements.

Plan Maintenance

This plan is the principal source of guidance for evacuation in Ouray County. Overall coordination of this plan will be administered by the Ouray County Sheriff's Office or Local Law Enforcement. The Ouray County Office of Emergency Management is responsible for developing and maintaining this annex.

The plan will be reviewed and updated annually from the publication date, with the review led by the County Emergency Manager. Annual reviews are designed to keep contact information current and reflect organizational or procedural changes that might impact continuity. Beyond annual reviews, the plan should be updated following hazard events which require the plan's activation. Additional plan maintenance and review activities are documented in the table below and include associated tasks and suggested frequency.

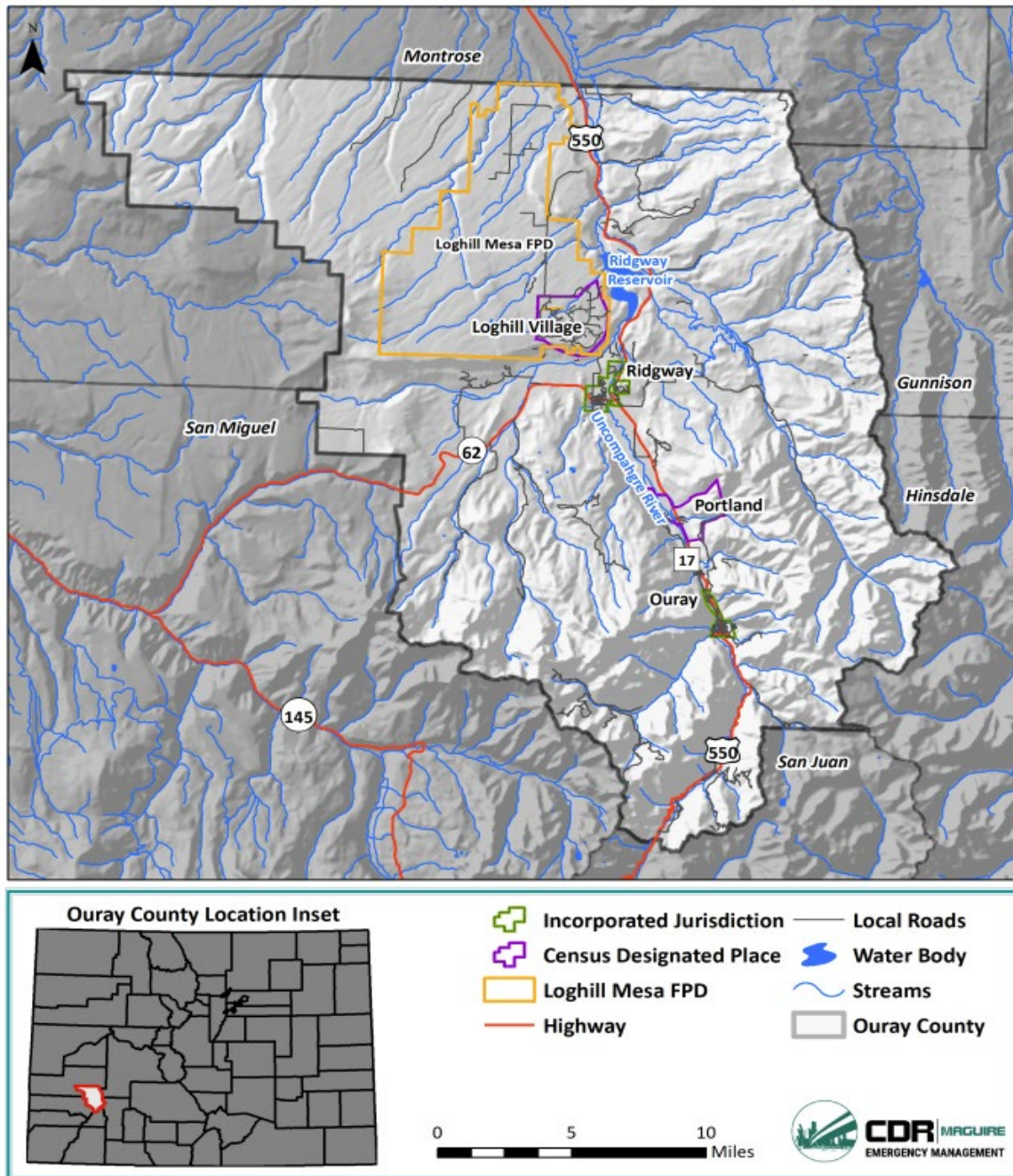
As part of the plan maintenance and review, staff should be trained on the Incident Command System (ICS) and regularly take part in exercises, drills, and workshops. The goal is to ensure all staff are familiar with the critical functions associated with response efforts during EEP activation.

Local department leadership and the designated county representative will determine the level of training and amount of participation in exercises.

Activity	Tasks	Frequency
Update/train new staff	<ul style="list-style-type: none"> • Provide EEP overview briefing to all new personnel involved in continuity operations • Ensure new staff engage in annual review of the EEP as appropriate 	Within 30 days of hire
Orient new policy officials and senior management	<ul style="list-style-type: none"> • Brief officials on EEP • Brief each official on their EEP responsibilities 	Within 30 days of appointment
Update and test equipment	<ul style="list-style-type: none"> • Update and test vital equipment so that they are working correctly 	Quarterly
Maintain shelter location agreements	<ul style="list-style-type: none"> • Maintain agreements with shelters • Verify contact information 	Quarterly
Update rosters and logs	<ul style="list-style-type: none"> • Update and revise employee rosters • Update and revise equipment logs 	Quarterly or as needed
Plan update	<ul style="list-style-type: none"> • Review plan for accuracy • Update based on incident events • Manage distribution of plan updates 	Annually
Review/update supporting MOUs/MOAs	<ul style="list-style-type: none"> • Review MOUs/MOAs as needed for currency and new needs 	Annually
Plan and conduct exercises	<ul style="list-style-type: none"> • Conduct joint exercises with agencies • Support and participate in interagency exercises 	Bi-Annually

Community Overview

Ouray County covers 540.7 (US CENSUS) square miles in southwestern Colorado. The 2022 population is 4,936 people. Ouray County ranges in elevation from 5,285 feet at its north boundary to 14,158 feet at the peak of Mount Sneffels. It is and is a scenic destination for tourism and outdoor recreation. Ouray County contains the upper Uncompahgre River Valley and northern San Juan Mountains. Ouray County borders Montrose, San Miguel, San Juan, Hinsdale, and Gunnison Counties. Ouray County contains two incorporated municipalities: the City of Ouray (2020 population = 898 people) and the Town of Ridgway (2020 population = 1,183 people). There are three census-designated places in unincorporated Ouray County: Colona (2020 population = 36 people), Loghill Village (2020 population = 617), and Portland (2020 population = 136). In addition to the incorporated municipalities and census-designated places in unincorporated Ouray County, the Board of County Commissioners highlight Elk Meadows, Southwest of Ridgway, as a population center.



*Ouray County Basemap
(Source: Ouray County HMP)*

Demographics

Ouray County and the incorporated community's population estimates and general demographic vulnerabilities are described in the following section. Characteristics such as age, disability, and/or primary language spoken at home will significantly impact a resident's ability to evacuate in a timely manner.

Table 1: Population and At-risk Persons

Jurisdiction	2020 Census	Median Age	Disability %	Language %*
Ouray County	4,874	54.6	15.1%	0.8%
City of Ouray	898	47.7	11.3%	0.0%
Town of Ridgway	1,183	45.5	15.8%	0.2%

Source: U.S. Census, 2023

*Note – Language % indicates “speaks English less than “very well””; Disability % is designated as “total civilian noninstitutionalized population %”

The local planning committee noted approximately 8% of the population is English as a Second Language due to the large transient working population during the summer months.

At-risk Populations

In general, at-risk populations may have difficulty with medical issues, poverty, extremes in age, and communication due to language barriers. Several outliers may be considered when discussing potentially at-risk populations, including:

- Not all people who are considered “at-risk” are at-risk;
- Outward appearance does not necessarily mark a person as at-risk;
- A hazard event will, in many cases, impact at-risk populations in different ways.

The following locations may house “at-risk” populations or persons with functional access needs. Note there are no licensed health facilities in Ouray County. This includes assisted living, nursing homes, or hospitals.

Type	Facility Name	Address	Other Note
Health Clinic	Cedar Point Health	295 Sherman St Ridgway CO	Phone – 970-626-5123
Health Clinic – Physical Therapy	Mountain View Physical Therapy (Montrose Regional Health)	185 Sherman St. Unit 103 Ridgway CO	Phone – 970-626-4050
Health Clinic -- Ouray County Public Health	Ouray County Public Health	177 Sherman St. Unit 103 Ridgway CO	Phone – 970-325-4670
Schools	Ridgway Elementary School	1115 Clinton St Ridgway CO	Phone – 970-626-5468
	Ridgway Secondary School	1200 Green St Ridgway CO	Phone – 970-626-5788
	Ouray School District R1	400 7 th Ave Ouray CO	Phone – 970-325-4505
Daycares	Early Learning Center of Ouray (toddler/preschool)	400 7 th Avenue Ouray CO	Phone -- 970-325-4505
	Katrina Thomsen (Infant/Toddler/Preschool/School Age)	399 N Cora St Ridgway CO	Phone – 970-729-2319
	Ridgway Elementary School (Toddler/Preschool)	1115 Clinton St Ridgway CO	Phone – 970-626-5468
	VOYAGER YOUTH PROGRAM (Preschool/School Age)	280 N Cora St	Phone – 970-626-4279
	New Daycares will be online soon at various attainable house locations	TBD	TBD

Population Groups of Concern

To create effective community evacuation plans for vulnerable populations, it's crucial to address potential weaknesses and build on the strengths through ongoing collaboration. Potential risks and identified challenges for various demographics may include:

- *Persons with Functional Needs* –
 - Persons with physical limitations will likely require assistance with transportation out of evacuated areas and back into affected areas once the emergency is stabilized. Evacuation routes and shelters may not be fully accessible, posing challenges for individuals with mobility issues.
 - Persons deaf or hard of hearing may have challenges receiving all emergency alert information.
 - Service Animals shall be allowed to remain with their owner throughout evacuation, shelter, and re-entry.

- Not all persons (either residents, transient workers, or tourists) have access to vehicles or transportation.
- *School-age Children* – Separated families (parents vs. kids) are a concern for evacuation during the school year or during working hours. Non-driving children who remain at home while parents commute to surrounding areas for work are a concern. It is not possible to maintain a full roster of homes with children at home.
- *Transient Workers* - There is a population of transient or homeless population, particularly during the summertime, in Ouray County which are at heightened risk during evacuation procedures. Notification and transport of these non-housed workers is difficult and should be of priority to emergency personnel. Additionally, non-native persons may not be culturally aware of challenges inherent to living in the mountains, leading to difficulties for individuals from diverse backgrounds or those who do not understand the gravity of a situation.
- *Those who Speak English as a Second Language* - Lack of accessible communication methods may lead to confusion and exclusion during evacuation efforts.
- *Pet Owners* - Residents with animals or pets are likely to resist evacuation orders if barred from bringing their animals. Accommodations and/or information regarding animal housing should be a priority to incentivize people to evacuate as quickly as possible.
- *Tourists* – Those unfamiliar with the area or without knowledge of main roads will require additional notification and education to evacuate. Extra vehicles or transport methods may be required to assist travelers and tourists without adequate transportation.
- *Campers, Hunters, Hikers* - Campers, hikers, hunters, and other recreational enthusiasts can also be distributed throughout the surrounding areas and are often out of range of cellphone towers. Campgrounds around Ouray County include:
 - Amphitheater Campground – Ouray RD (USDA/USFS)
 - Angel Creek – *Tent Camping Only*
 - Beaver Lake – *Access through east Ouray county*
 - Blue Lakes Camping area
 - Ironton Townsite
 - Thistledown – *Tent Camping Only*
- *Daycare Providers* - In addition to family reunification plans, infant seats and close supervision will be required.

Livestock Producers – There is a relatively large population in Ouray County who have large-animals (cattle and horses primarily). Livestock producers face unique challenges and risks when attempting to evacuate during emergencies or disasters. The process of evacuating animals involves careful planning and coordination to ensure the safety and well-being of the animals. **The assumption shall be made that some ranchers will likely prioritize their livestock’s welfare over self-evacuation to ensure the livestock and their livelihood are safe.** Concerns to be aware of include:

- Limited transportation resources – livestock require specialized transportation such as trucks and trailers which not all owners may have on hand. Evacuating large numbers of livestock can also contribute to traffic congestion especially on rural roads.
- Size and number of animals – the large size and number of animals challenge evacuation logistics (such as travel time and available road capacity). Maintaining access to adequate feed and water during evacuation is challenging, especially for prolonged periods.
- Lack of suitable shelters – not all shelter facilities are designed to accommodate livestock. Additionally, lack of adequate shelters for long term storage if housing is damaged or roadways are impassable.
- Limited Advance Warning – rapidly evolving hazard conditions may provide inadequate time to wrangle, load, and relocate animals.
- Financial considerations – evacuation efforts can result in a significant financial burden for producers, including transportation costs and potential property damage.

Due to privacy issues, the county may not have adequate information on the location and extent of assistance required by people with special needs. Because resources and emergency conditions may not allow for house-to-house contact, persons with special needs, the elderly, pets, or livestock should outline a plan for emergency evacuation and, if necessary, appoint a primary person to assist them.

Existing Capabilities

Ouray County encompasses a mosaic of land ownership and jurisdictional boundaries. Because of this, interagency cooperation is essential not only for emergency response, but also for prevention, preparedness, mitigation, and fiscal issues. Between Ouray County, the City of Ouray, and the Town of Ridgway, there are a multitude of complimentary and competing plans, procedures, capabilities, and resources available. The capabilities table below lists which planning and regulatory, administrative, financial, and outreach capabilities the County and communities have.

Planning and Regulatory Capability	Ouray County	Ouray	Ridgway
Comprehensive Plan	Yes	Yes	Yes
Capital Improvements Plan	Yes	Yes	Yes
Economic Development Plan	No	Yes	Yes
Emergency Operational Plan	Yes	County	County
Community Wildfire Protection Plan	Yes	Yes	Yes
Storm Water Management Plan	No	Yes	Yes
Building Codes	Yes	Yes	Yes (2019)
Zoning Regulation/Ordinances	Yes	Yes	Yes
National Flood Insurance Program	Yes	Yes	Yes
Floodplain Management Plan/Ordinance	Yes	Yes	Yes
Community Rating System	No	No	No
Mutual Aid Agreements	Yes	Yes	Yes

Administrative & Technical Capability	Ouray County	Ouray	Ridgway
Planning Commission	Yes	Yes	Yes
Floodplain Administration	Yes	Yes	Yes
GIS Capabilities	Yes	No	No
Chief Building Official	Yes	Yes	Yes
Civil Engineering	Yes	No	Yes
Grant Manager	No	No	No
Local Staff Who Can Assess Community's Vulnerability to Hazards	Limited	Limited	Limited
Fiscal Capability	Ouray County	Ouray	Ridgway
Authority to Levy Taxes for Specific Purposes such as Mitigation Projects	Yes	Yes	Yes
Utility Service Fees	No	Yes	Yes
Storm Water Service Fees	No	No	No
Development Impact Fees	No	No	No
General Obligation Revenue or Special Tax Bonds	No	No	Yes
Education & Outreach Capability	Ouray County	Ouray	Ridgway
Local citizen groups or non-profit organizations focused on hazard risk reduction and community protection	Yes	Yes	Yes
Ongoing public education or information program (e.g., responsible water use, fire safety, household preparedness, environmental education)	Yes	No	Yes
StormReady Certification	No	No	No
Firewise Communities Certification	No	No	No
	Loghill Mesa – Yes		
Tree City USA	No	No	No

Other Available Resources

Agencies who assist or can support evacuation efforts include but may not be limited to the following:

Ouray County Departments		
County Fairground	Emergency Management	Human Services
County PIO	Geographic Information System (GIS)	County Officials
Road and Bridge	Emergency Medical Services	Search and Rescue
County Assessor	County Public Information Officer	County Attorney

Municipalities' Departments		
City of Ouray Public Works	City of Ouray: Community Development + Building Dept/Building Inspector	Town of Ridgway Public Works
City of Ouray Officials	Town of Ridgway: Community Development/Town Planner + Building Inspector	Town of Ridgway Officials
City of Ouray Police Department		Town of Ridgway Marshals Office
Fire Districts or Associations		
Log Hill Mesa Fire Protection District	Montrose Fire Protection District	Ouray Fire Protection District
Ridgway Fire Protection District	Horsefly Volunteer Fire Protection (association)	
School Districts		
Ridgway School District	Ouray School District	Montrose School District
State and Federal Agencies		
Colorado Department of Transportation	Colorado Office of Emergency Management	Colorado State Forest Service
Colorado State Parks and Wildlife	Colorado State Patrol	National Park Service
U.S. Fish and Wildlife Service	U.S. Forest Service	U.S. Bureau of Land Management
Non-profit or Other Potential Resources		
Local HAM radio groups	Local livestock producers	Home Health Care Providers
American Red Cross	WestCO Regional Dispatch Center	Colorado West Region Healthcare Coalition of Colorado
Sheriff's Posse		Second Chance Humane Society
Utilities		
San Miguel Power Association	Propane Companies	Black Hills Energy
City of Ouray – Water & Sanitation	Town of Ridgway – Water & Sanitation	Dallas Creek Water
Fairway Pines Sanitation District	Cornerstone Metro District – Water & Sanitation	Tri-County Water

The largest limiting factor facing the county and communities for effective emergency response is a lack of adequate staff capacity.

Identified Resources and Opportunities for Improvement

During a review of existing plans, policies, and capabilities for the planning team, key themes and opportunities for improvement were identified. These improvements may be carried forward and should be integrated into other plan updates, trainings, or projects in the future.

- Zoning Ordinances
 - New developments should be platted and permitted only if they include multiple egress routes.
- Roadway Projects and Improvements
 - Roads should be widened to account for emergency response access along shoulders and/or include signage for emergency access routes.
 - Evacuation Routes should require specific markings or designation signage.
- Training, Maintenance, Education Needs
 - Tabletop exercises or designated trainings for emergency responders/local officials/law enforcement should occur regularly.
 - A community evacuation drill days would bolster local knowledge of the plan and promote self-reliance.
 - Conduct education campaign on preparing for evacuation – preparing go-bags, community alert sign-ups
 - Evaluate and implement specific warning siren systems (siren blasts indicating evacuation notice) with public education campaign of siren blast patterns.
- Funding Opportunities
 - All jurisdictions could benefit from additional funding opportunities to support local resiliency endeavors – particularly if funds could be used to augment local staff resources. See State Emergency Fire Fund information below:

State Emergency Fire Fund (EFF)

The EFF was established in 1967 by a few counties that recognized that some fires may exceed the capabilities of county resources and abilities. County participation is voluntary. Majority of the counties in Colorado participate including Ouray County contribute into this insurance-type fund that can pay for catastrophic wildfires on state and private land that exceed a participating county's capabilities including suppression costs. EFF funding must be requested by the county sheriff and can only be approved by the director of DFPC.

The EFF is strictly a fire suppression fund and cannot pay for rehabilitation. However, repair of damage directly related to suppression (e.g., water bars on cat lines) may be authorized by a DFPC line officer if accomplished as a suppression component at the time of the fire suppression effort. Alternate resources can be negotiated depending on resources appropriate for the fire. The EFF is a necessary link to FEMA funds; however, federal agencies cannot obligate EFF funds.

Emergency Evacuation Procedures

The Ouray County EEP can be implemented without warning and should be implemented immediately upon activation.

Decision to Activate the EEP

The Ouray County Emergency Manager, County Sheriff, or a representative designated by either has the authority to activate the EEP. The decision to activate will be tailored for the situation and based on projected or actual impact. Based on the type and severity of the emergency, the EEP may be activated by any of the following events.

- **Wildfire events** in the county which may impede transportation corridors or encroach on communities,
- A **hazardous materials incident** capable of impacting the physical wellbeing of residents or visitors,
- An **avalanche/rockslide/debris flow** impacting a community or major thoroughfare,
- **Severe flooding** on the Uncompahgre River or other creeks which would block adequate access to portions of the county or communities, and/or
- Any **other emergency event** which compromises the integrity or safety for residents.

Direction and Control

During EEP activation, the representative who activated the EEP maintains overall direction and control of operations, but may delegate relocation, continuity, and reconstitution operations to the other authorized staff.

A point of contact for each zone or region under evacuation order should be established that is then responsible for tracking when and where warnings have been issued, number evacuated, status on shelter capacity, and those remaining the risk area including functional needs and people with disabilities in their zone.

Operational Phases

This evacuation plan is broken down into three main phases:

- **Be Ready: Pre-Evacuation Readiness and Preparedness** – places the emphasis on preparing residents of potential future evacuation orders. Education is based around developing situation and preparing to evacuate.
- **Get Set: Activation of Voluntary Evacuation** – emphasis shifts to collecting materials, communicating a plan to family members, or evacuating voluntarily for those with additional risk factors. Emergency procedures may include rerouting traffic, establishing detours, clearing traffic for EMS, opening shelters, etc.

- **Go Now! Activation of Mandatory Evacuation** – mandatory evacuation orders established for areas at risk. Actions include canvassing areas, assisting with evacuations as needed, or closing and securing hazardous areas. All messaging pertains to imminent danger, shelter locations, closed routes or detours.
 - **Mandatory or full evacuation only directed if remaining in the area poses significant risk or danger to life.**

Refusal to Evacuate

Persons who refuse to comply with a mandatory evacuation order will not be arrested nor forcibly removed from their homes. Those who refuse to evacuate should be informed that they should not expect rescue or other lifesaving assistance during the incident. If minor juvenile children are present and under the care of those who refuse to evacuate, the children may be taken into protective custody if Law Enforcement believes the children are in imminent danger of serious bodily injury or death. According to county policies, the Ouray County Human Services Department will be contacted for continued care and custody of juvenile children. Additionally, and depending on the circumstances, those who refuse to evacuate and are under the influence of alcohol, or drugs or displaying severe behavioral health issues may be taken into protective custody if: (1) a law enforcement officer has probable cause to believe the person is gravely disabled or there is an imminent danger to that person or others, as a result of a mental health disorder; or (2) a law enforcement officer or emergency service patrol has probable cause to believe a person is incapacitated or clearly dangerous to themselves or others, as a result of alcohol, drugs, and/or other substances."

- Under an EVACUATION ORDER, the responding agency or evacuation entity will flag entrances to residences, if time permits, with crime-scene flagging to indicate that residents have been notified. Two flags will be applied where residents have refused to evacuate.
 - *Adults* refusing to cooperate with area closures or evacuations will be advised of the impending danger and that emergency resources will not be risked rescuing them after the time of the Evacuation Order. The officer or volunteer involved will note the address and report it to the IC as soon as practical.
 - *Minors* will be evacuated regardless of their decision to stay, unless a parent or legal guardian is present who is also staying and insists that the minor must stay with them.

Reconstitution or Event Termination

The County Emergency Manager and Sheriff's Office are responsible for determining if the overall safety conditions are favorable enough to allow residents to return to their homes and businesses.

Expected Actions

- Sheriff's office or local Police Departments determine conditions are safe to return.
- Designated staff will identify areas where repopulation can be safely accomplished without interfering with emergency response activities (such as fire suppression efforts or debris removal)
- EM and Sheriff Dispatch to notify all emergency responders the evacuation order is to be lifted.
- PIO will then share public notices on all used media channels: social media, local news media, county website, etc., for residents.
 - *Anticipate members of the public may attempt to enter through unauthorized pathways.*
 - *Advise evacuees how and when to return to their homes and businesses, indicating preferred travel routes and identification requirements for proof of residence.*
- Coordinate with special care facilities regarding the return of evacuees to those facilities.
 - *Note only those with significant health issues or anticipated medical procedures can be relocated to other hospitals. Surrounding health facilities are not holding facilities for medically vulnerable populations.*

To prevent looting, the responsible law enforcement agency will attempt to provide security to the evacuated areas. Only individuals who reside in the evacuated area should be allowed to enter the area when it is deemed safe to do so. Residency will be determined by driver's license or other documentation of record.

Upon termination of the evacuation order, the IC will use the primary designated Evacuation Center (4-H building) as an evacuee meeting place, to advise them of what to expect and how to obtain recovery resources to contend with losses and to obtain updated contact information from returnees.

Shelter in Place

In some cases, evacuation may not be necessary for residents or visitors. Shelter in place orders indicate residents should stay indoors or in a safe location instead of evacuating the area. Depending on the nature of the event a shelter in place order shall be issued rather than evacuation. Events which may lead to a Shelter in Place Order can include:

- Chemical spill or hazardous materials
- Impending severe winter weather
- Terrorist event such as a mass shooter or escaped prisoner

Expected Actions

The expected actions for county and city officials will consist of regular Emergency Response or Operation Actions with specific messaging to be shared via the PIO to inform the public regarding the situation.

- Perform standard Emergency Operations Plan procedures as necessary.
- Notify key stakeholders at risk if events indicate specific shelter in place considerations.
 - Schools
 - Daycares
 - Large ongoing events – 4H or Campground event organizers
- Send out Shelter-in-Place messaging relevant to the specific area at risk.

Expected Actions

The following list of Expected Actions are expected to occur to ensure all departments or personnel can be aware of the situation and take their own individual actions. While this is a more general list of actions, department specific actions and responsibilities are further detailed under their appropriate section.

Overall Expected Actions

- Activate the county's Emergency Operations Center (EOC).
 - Relevant departments send designated representative to EOC.
- Incident Commander is to monitor the ongoing emergency event and determine if Emergency Evacuation Plan is to be activated.
- Determine EEP Level.
 - **Be Ready** – general notification, FYI. Areas have been identified as “at risk”.
 - **Get Set – Voluntary Evacuation.** Emphasis areas at highest risk such as single egress neighborhoods near threat or vulnerable population. Areas at risk are threatened.
 - **Go Now! – Mandatory Evacuation.** Threat is imminent or occurring. Areas at risk have been breached.
- Notify all county and community responding departments of EEP activation level
 - All responding departments to perform individual expected actions.
- Share all media posts or messaging as provided by the PIO.
- Activate evacuation centers.
 - Identify and obtain additional resources needed to operate the Ouray County 4-H Event Center and Fairgrounds as an Evacuation Center for evacuees and animals, such as generators, portable showers, food preparation facilities, sleeping accommodations, animal care, etc.
- Activate animal evacuation centers.

- Contact Second Chance Humane Society to implement procedures for managing and staffing the small and large animal Evacuation Centers.
- Communicate any blocked/damaged/impassable roadways to the Incident Commander.
 - IC will coordinate with Ouray County Road and Bridge Department to place road closure signage.
 - Colorado DOT also assists with closures, directing traffic, and barriers.
 - Establish Control Points to block re-entry to evacuated zones.
- Track time, labor, and resources utilized for reimbursement and After-Action Reports.
- Assist with Damage Assessments and/or area sweeps for re-entry conditions.
 - Remove debris from major roads, chokepoints, or public rights-of-way.
 - Terminate the evacuation order and allow residents to return home.

Expected Actions by Designated Representative

The following section lists out the anticipated actions for each individual department or designated representative involved in evacuation procedures for Ouray County. Note, this is not an exhaustive list, and responsibilities or tasks may be added or skipped depending on the nature of the event. This section is designed to allow new representatives to pick up the plan and have a clear task list.

- Ouray County Officials and Staff
 - Ouray County Emergency Manager
 - Ouray County Sheriff and Sheriff's Office
 - Ouray County Public Information Officer (PIO)
- City of Ouray Officials and Staff
 - City Administrator/Finance
 - Administrative Staff
 - GIS/IT
 - Community Development + Building Dept/Building Inspector
 - City Council
 - Public Works
 - Ouray Police Department
- Town of Ridgway Officials and Staff
 - Town Manager
 - Town Clerk
 - Town Council
 - Community Development/Town Planner + Building Inspector
 - Public Works
 - Town Marshal

- Fire Protection Districts and Emergency Services
 - Loghill Fire Protection District
 - Ouray Fire Protection District
 - Ridgway Fire Protection District
 - Ouray County Emergency Medical Services
 - Ouray County Mountain Rescue Team
- State of Colorado Departments or Agencies
 - Colorado Department of Transportation
 - Colorado State Patrol
 - Colorado Parks and Wildlife
- Sheltering or other Assisting Agencies
 - American Red Cross / Salvation Army
 - Ouray County School District
 - Ouray County Fairgrounds/4H Event Center

Ouray County Emergency Manager

Pre-event

- Coordinate and ensure mutual aid documentation is completed and filed.
- Coordinate and manage plan maintenance, training, and/or exercises.
- Distribute copies of the plan to all recipients of the original evacuation plan.
- Provide updated contact information (staff personnel, phone, other information as needed) for inclusion in the Evacuation Plan on an annual basis.

Mid-event

- Activate and serve as manager of Ouray County Emergency Operations Center (EOC)
 - Provide technical support to EOC staff and other county personnel for resource management, damage assessment, intergovernmental coordination, disaster recovery, hazard mitigation, and other emergency management functions as needed.
- Serve as the primary point of contact to communicate with municipalities and the State EOC.
 - Establish communication with the state to request state assistance as needed.
- Notify and activate emergency personnel to staff EOC and implement EEP.
- Assess information and data for determination of emergency level;
- Determine if an evacuation order should be issued and what category.
 - Issue the BE READY pre-evacuation notice when the existing hazard condition is “at risk with likelihood to continue or increase in severity.”
 - Initiate the GET SET voluntary evacuation notice when the exiting hazard condition is “areas are becoming threatened.”

- Initiate the notification process for GO NOW mandatory evacuation when the existing hazard condition is “areas are breached, or breach is imminent due to hazard conditions.”
- Provide assessment of emergency conditions and determine evacuation status level.
 - Provide recommendations to the Sheriff, County Administrator, and/or County Commissioners for local disaster declarations, travel restrictions, curfews, or other restrictions.
- Obtain formal Disaster Declaration and commitment of resources.
 - Coordinate necessary resources or request for resources as required by incident level.
- Determine opening status of temporary shelter locations.
 - Coordinate with American Red Cross for shelter openings and operation.
 - Contact and activate Second Chance Humane Shelter and for animal/livestock sheltering.
- Serve as the secondary County PIO if necessary.
 - Implement and share public warning measures or disaster-related information including safety warnings and casualties.
- Coordinate with Public Health Director and Ouray County Human Services to assist with persons with access and functional needs.
- Coordinate with utilities if service needs to be shut off from areas at risk.

Post-event

- Prepare and provide final damage or situation reports to County Commissioners and/or State officials.
- Oversee post-disaster impact reports.

Ouray County Sheriff and Sheriff's Office

Pre-event

- Participate in annual trainings and maintenance efforts for EEP.
- Provide updated contact information (staff personnel, phone, other information as needed) for inclusion in the Evacuation Plan on an annual basis.

Mid-event

- Implement the Incident Command System (ICS).
- Provide a representative to staff and coordinate with EOC.
- Assess information and data for determination of emergency level.
- Identify and implement the means of communication to support direction, control, and coordination of emergency management activities.
- Coordinate evacuations in designated areas – notify EOC of evacuated areas as cleared by deputies. Use grid pattern to ensure all homes are notified as appropriate.

- *if time permits - Flag entrances to residences with crime-scene flagging to indicate that residents have been notified. Two flags will be applied where residents have refused to evacuate.*
- Fire Departments and Law Enforcement sweep designated evacuation zones to ensure areas are cleared.
 - Work with Public Health for residents with special needs or those who require assistance.
- Conduct search and rescue in impacted areas within their jurisdictions.
- Share and distribute public warning measures as provided by PIO.
- Participate in the decision to terminate the emergency condition.

Post-event

- Lead area surveys to determine if conditions are safe to return for residents.
- Establish, coordinate and monitor checkpoints and roadblocks in unincorporated areas of the county.
 - Coordinate with Colorado Department of Transportation for road closures or traffic management.
 - Ensure license checks are conducted at entry points for security purposes.
- Provide security to evacuated areas as appropriate.

Ouray County Public Information Officer

Designated Representatives

The Public Information Officer (PIO) releases all emergency public information about local operations and assistance during a disaster. All media inquiries must be routed through the designated PIO. Additionally, the PIO will coordinate the printing of publications and flyers.

Pre-event

- Maintain a list of Press Contacts (including local, state, and national).
- Maintain a working relationship with local and state media sources.
- Participate in annual trainings and maintenance efforts for EEP.

Mid-Event

- Coordinate or review all emergency public information releases from local, State, or Federal agencies.
- Advise the appropriate government officials with status reports and information for news releases. PIO to notify the following when evacuation notice implemented:
 - Ouray County Government
 - The local media (KUBC and KKXX) and all social media distribution
 - American Red Cross
 - Ouray Mountain Rescue

- WestCO Regional Dispatch
- Coordinate the release of emergency public information with other agencies of the local, State, and Federal government.
- Utilize any or all of the following methods to disseminate public notification language:
 - Social media – County webpage, X [Twitter], Facebook, Instagram
 - Local broadcasts - radio stations
 - *KUBC (580 AM) or KKXK (94.1 or 99.3 FM)*
 - Available county/community email listservs
 - Portable bullhorns in communities
 - Highway message signs
 - Emergency Alert Systems – Ouray County Alerts
 - Door to Door
 - Fire sirens in Ouray for Ouray FD and in Ridgway for RFPD
 - Google Chat (for internal county employee communication)
- Disseminate and respond to requests from the public for pre-, active, and post-disaster information.
- Coordinate with WestCO Regional Dispatch when appropriate.
 - Activation Procedure: Call WestCO Dispatch 970-249-9110 and request activation in Ouray and/or Ridgway.
- Coordinate and notify surrounding counties if evacuation orders are in place.

Post-Event

- Ensure that the public is informed about the proper identification required for re-entry.
- Ensure that the public is notified once re-entry begins. Provide guidance on which areas are open for re-entry and ways to access areas.

Ouray County Officials and Staff

- County Commissioners
 - Provide formal disaster declaration to Governor's Office to receive state and/or federal assistance as needed.
 - Provide approval and commitment of county resources and funds for disaster response purposes.
 - Issue official orders for required public safety measures (i.e. evacuation orders, curfew establishment, price controls, etc.).
- County Manager/Deputy County Manager
 - Provide assistance to the IC, EOC, and Sheriff as needed.
 - Approve allocation of County resources and funds for disaster or emergency purposes as authorized by the Board of County Commissioners.
 - Serve as intergovernmental liaison and initiate formal request for outside assistance from other local jurisdictions as needed.

- Participate as part of County-wide damage assessment team at EOC and on local/state field damage survey teams, (primarily for County owned facilities), as needed.
- Issue directives to County departments and personnel regarding changes in normal duties/work schedules, temporary reassignments, and employment of temporary workers, as needed.
- Procure emergency-related supplies and materials and oversee the administration of vendor contracts for emergency services and equipment as authorized by the Board of County Commissioners.
- Establish and maintain an incident-related financial record-keeping system.
 - Track financials and prepare documents necessary to recover monies from insurance providers, State/Federal Disaster Assistance Programs, or other funds or combinations of funding sources.
- Attorney
 - Provide legal counsel as needed to county officials regarding emergency incidents.
 - Prepare legal documentation - disaster declarations, resolutions, or regulations required to facilitate emergency operations – as needed or requested.
- Assessor
 - Provide Sheriff and EOC of requested assessor data that may be needed to determine if there are structures in areas needing evacuation that may contain people or livestock.
- Coroner
 - During Incident – be available for Emergency Manager or IC deployment to assist with other needs as they arise.
 - During/Post Incident – coordinate and operate temporary morgue and mortuary services, if needed. Contact Montrose Regional Health and/or Community Hospital to establish additional morgue space or request additional surge trailers or supplies.
 - Participate and assist with Damage Assessment Teams post-incident.
- GIS/IT
 - Provide situational and incident maps to the IC or Emergency Management or response workers as needed.
 - Provide updated map graphics as needed for evacuation purposes to reflect any changes in pre-established routes or plans.
 - Maintain and provide telecommunication systems for governmental use during incident.
 - Including for EOC, ICP, or other agencies as needed through the duration of the hazard incident.

- Coordinate and manage wired and radio communications in conjunction with the EOC and communications center.
- Human Resources
 - Track which employees are assisting with emergency response actions or those off work time.
 - Prepare, provide, and/or assist with Worker's Compensation Plans for injured workers, as needed.
- Land Use & Planning + Building Inspector
 - Staff should remain available for Emergency Manager or IC deployment to assist with other needs as they arise.
 - Participate and assist with Damage Assessment Teams post-incident.
 - Provide public education materials related to community disaster recovery and reentry by citizens into disaster-impacted structures and neighborhoods (e.g., safety of stored goods, removal of mildew, cleaning of smoke damages, etc.).
- Maintenance
 - Coordinate and assist with opening shelter and facilities for emergency use
 - Includes managing or providing staff, supplies, as well as power, water, or heat needs.
 - Assist Public Works and Roads Departments in debris removal and clearance of public right-of way (prioritize emergency lifeline routes).
- Public Health
 - Assist the Sheriff, EMS, and Human Services in identifying homebound and/or special needs residents who may require assistance evacuating.
 - Request and coordinate assistance from outside health and medical resources aiding Ouray County, as needed.
 - Provide staff to serve as a member on the Damage Assessment Team (Environmental Health Officer or Public Health Director).
 - Assist EOC/IC in evaluating and managing medical resources needed during hazard events – make requests to EOC to pass to state officials if requiring state or federal assistance.
 - Identify and document to EOC/ICP any biological, chemical, or environmental hazards that present health hazards to the general public.
 - Coordinate with the Designated Emergency Response Authority for the mitigation of identified hazards.
- Road and Bridge
 - Provide transportation and support of emergency response and recovery efforts (e.g., movement of county personnel, equipment, and supplies to designated staging areas).
 - Provide barricades and assist with road closures and traffic control.
 - Assist with traffic control and road closures as necessary to include posting of variable messaging signs.

- Remove debris, clear public rights-of-way, and plan for street/route recovery operations, with priority assigned to critical emergency services lifelines.
- Coordinate and lead Damage Assessment Teams post-incident for full damage assessment to county infrastructure and facilities.
 - Provide status report to County Sheriff and EOC
- Provide resources to responders (e.g., assist the fire department in obtaining water when needed or other provisions requested, etc.).
- Evaluate and monitor alternative transportation corridors identified for evacuation to ensure safety and capacity allows for timely evacuation of residents.
- Work with CDOT for road closures or blocked transportation routes – install signage indicating roads blocked.
- Human Services
 - Assist the Sheriff, EMS, and Public Health in identifying homebound and/or special needs residents in the case of population evacuation.
 - Assist the American Red Cross, Salvation Army and other volunteer organizations in the provision of emergency shelters, temporary housing and other assistance to displaced citizens.
 - Responsible for coordinating sheltering of displaced families.
 - Responsible for reuniting displaced families.
 - Coordinate and track volunteer roster and efforts for reimbursement.
 - Post event – coordinate resources for stress counseling/crisis counseling for disaster victims and disaster relief workers, as needed.
- Vegetation Management
 - Assist Roads Departments in debris removal and clearance of public right-of-way (prioritize emergency lifeline routes).
 - Staff should remain available for Emergency Manager or IC deployment to assist with other needs as they arise.
 - Participate and assist with Damage Assessment Teams post-incident.

All other departments shall remain available for Emergency Manager or IC deployment to assist with other needs as they arise and participate and assist with Damage Assessment Teams post-incident. Including:

- Clerk & Recorder
- Public Trustee/Treasurer

City of Ouray Officials and Staff

- City Administrator/Finance
 - Coordinate, commit, and direct City of Ouray government activities in support of emergency or disaster relief efforts.

- Provide approval and commitment of city resources and funds for disaster response purposes as authorized by the City Council.
- Issue directives to city departments and personnel regarding changes in normal duties/work schedules, temporary reassignments, and employment of temporary workers, as needed.
- Provide assistance to the IC/EOC, City Council, and Police Chief as needed.
- Serve as intergovernmental liaison and initiate formal requests for outside assistance from other local jurisdictions as needed.
- Participate in and provide personnel for the County-wide damage assessment team at EOC and on the local/state field damage survey team, as needed.
 - Establish the safety of buildings or implement condemnation procedures when necessary.
- Procure emergency-related supplies and materials and oversee the administration of vendor contracts for emergency services and equipment as authorized by the City Council.
- Establish and maintain an incident-related financial record keeping system.
 - Track financials and prepare documents necessary to recover monies from insurance providers, State/Federal Disaster Assistance Programs, or other funds or combinations of funding sources.
- Administrative Services Staff
 - Track which employees are assisting with emergency response actions or those off work time.
 - Prepare, provide, and/or assist with Worker's Compensation Plans for injured workers, as needed.
- GIS/IT
 - Provide situational and incident maps to the IC or Emergency Management or response workers as needed.
 - Provide updated map graphics as needed for evacuation purposes to reflect any changes in pre-established routes or plans.
 - Maintain and provide telecommunication systems for governmental use during incident.
 - Including for EOC, ICP, or other agencies as needed through the duration of the hazard incident.
- Community Development + Building Inspector
 - Staff should remain available for Emergency Manager or IC deployment to assist with other needs as they arise.
 - Participate and assist with Damage Assessment Teams post-incident.
 - Provide public education materials related to community disaster recovery and reentry by citizens into disaster-impacted structures and neighborhoods (e.g., safety of stored goods, removal of mildew, cleaning of smoke damages, etc.).
- City Council

- Approve and commit city resources and funds for disaster response purposes.
- Issue official orders for required public safety measures (i.e. evacuation orders, curfew establishment, price controls, etc.).
- Public Works
 - Provide transportation and support of emergency response and recovery efforts (e.g., movement of city personnel, equipment, and supplies to designated staging areas).
 - Remove debris, clear public rights-of-way, and plan for street/route recovery operations, with priority assigned to critical emergency services lifelines.
 - Coordinate and lead Damage Assessment Teams post-incident for full damage assessment to county infrastructure and facilities.
 - Provide status report to County Sheriff and EOC.
 - Provide resources to responders (IE assist fire department in obtaining water when needed or other provisions requested, etc.).
 - Evaluate and monitor alternative transportation corridors identified for evacuation to ensure safety and capacity allow for timely evacuation of residents.
- Ouray Police Department
 - Conduct search and rescue in impacted areas within their jurisdictions.
 - Coordinate with Ouray County Maintain Rescue for response.
 - Enforce curfews within their municipalities, if required.
 - Monitor road conditions and report traffic flows and counts within their municipalities.
 - Provide mutual aid to municipal law enforcement through the Operation Section of the EOC.
 - Assess emergency conditions and determine resource needs.
 - Needs can be filled with requests from county, mutual aid or outside agency resources.
 - Share and/or implement available public warning measures corresponding to current operational phase.

Town of Ridgway Officials and Staff

- Town Manager
 - Coordinate, commit to, and direct the government activities of the Town of Ridgway in support of emergency or disaster relief efforts.
 - Provide approval and commitment of town resources and funds for disaster response purposes as authorized by the Town Council.
 - Issue directives to town departments and personnel regarding changes in normal duties/work schedules, temporary reassignments, and employment of temporary workers, as needed.
 - Provide assistance to the IC/EOC, Town Council, and Town Marshal as needed.

- Serve as intergovernmental liaison and initiate formal requests for outside assistance from other local jurisdictions as needed.
- Participate in and provide personnel for County-wide damage assessment team at EOC and on local/state field damage survey team, as needed.
 - Establish safety of buildings or implement condemnation procedures when necessary.
- Procure emergency-related supplies and materials and oversee the administration of vendor contracts for emergency services and equipment as authorized by the Town Council.
- Town Clerk
 - Establish and maintain an incident-related financial record-keeping system.
 - Track financials and prepare documents necessary to recover monies from insurance providers, State/Federal Disaster Assistance Programs, or other funds or combinations of funding sources.
 - Responsible for resource tracking, record-keeping, and documentation of disaster-related costs and financial commitments.
 - Track the work hours and off-work time of employees that are assisting with the emergency response actions.
 - Prepare, provide, and/or assist with Worker's Compensation Plans for injured workers, as needed.
- Town Council
 - Provide approval and commitment of town resources and funds for disaster response purposes.
 - Issue official orders for required public safety measures (i.e. evacuation orders, curfew establishment, price controls, etc.).
- Community Development/Town Planner + Building Inspector
 - Oversee damage assessments of properties impacted by hazard event to determine safety for reoccupation.
- Public Works
 - Provide transportation and support of emergency response and recovery efforts (e.g., movement of city personnel, equipment and supplies to designated staging areas).
 - Coordinate and lead debris removal, clearance of public rights-of-way, and planning for street/route recovery operations, with priority assigned to critical emergency services lifelines.
 - Coordinate and lead Damage Assessment Teams post-incident for full damage assessment to county infrastructure and facilities.
 - Provide status report to Town Manager for coordination to EOC.
 - Provide resources to responders (IE assist fire department in obtaining water when needed or other provisions requested, etc.).

- Evaluate and monitor alternative transportation corridors identified for evacuation to ensure safety and capacity allow for timely evacuation of residents.
- Town Marshal
 - Coordinate and lead search and rescue in impacted areas within their jurisdictions.
 - Enforce curfews within their municipalities, if required.
 - Monitor road conditions and report traffic flows and counts within their municipalities.
 - Provide mutual aid to municipal law enforcement through the Operation Section of the EOC.
 - Assess emergency conditions and determine resource needs.
 - Needs can be filled with requests from county, mutual aid or outside agency resources.
 - Share and/or implement available public warning measures corresponding to the current operational phase.

Fire Protection Districts and Emergency Services

Fire Departments and Districts

- Procure and maintain equipment for emergency response situations.
- Provide updated contact information (staff personnel, phone, other information as needed) for inclusion in the Evacuation Plan and emergency management on an annual basis.
- Exercise and train with local response agencies.
- Delegate authority as needed (during absence, vacation, etc.).
- Provide fire protection, suppression, and hazardous materials response.
- Monitor transportation routes that may be inundated or experience debris build-up during high water/debris flow/deadfall events.
- Assist as able with traffic control and road closures as necessary.
- Fire Departments and Law Enforcement will sweep designated evacuation zones to ensure areas are cleared as available.
- Work with Public Health for residents with special needs or those who require assistance.
- Assist local law enforcement in door-to-door contact if available and requested.
- Collaborate with partner agencies to identify necessary response equipment/resources and prioritize the deployment of equipment/resources.
- Participate in the ICS as required by emergency levels and specific situations.
- Collaborate in planning the prioritization of response efforts.
- Track time, labor, and resources being utilized for reimbursement and After-Action Reports.

Ouray County Emergency Medical Services (OCEMS)

- Assist the Ouray County Sheriff and the Ouray County Public Health Agency in identifying homebound and special needs residents in the case of a population evacuation.
- Respond to emergency medical needs.
- Assist EMS in evacuating citizens with access and functional needs if available.
- Set up rehabilitation for all emergency responders.

Ouray County Mountain Rescue Team

- Provide trained personnel and equipment in support of search and rescue operations of the Ouray County Sheriff's Office as available and necessary.
- Assist with traffic control with EMS and uniformed law enforcement personnel, crowd control assistance, assistance with site security as assigned by the Ouray County Sheriff or Emergency Management Director.
- Provide Emergency Locator Transmitter Search Team requests through the EOC if needed
- Assist local law enforcement in door-to-door contact if available and requested.

State of Colorado Departments or Agencies

Colorado State Patrol

- Provide a representative to EOC and or ICP as needed.
- Monitor traffic conditions on state and federal highways and communicate findings to the EOC.
- Assist in traffic control and road blocking, if requested.
- Provide security for sheltering locations and/or EOC as needed.
- Establish and help monitor one-way routes for emergency vehicles and needed personnel.
- Provide Hazardous Material Incident response, if needed.

Colorado Department of Transportation

- Can supply heavy equipment.
- Provide traffic control on State Highways, if needed.
- Assist Road and Bridge with road maintenance, if requested.

Colorado Parks and Wildlife

- Provide a representative to EOC and or ICP as needed.
- Provide security for sheltering locations and/or EOC as needed.
- Assist with identification and monitoring of one-way routes for emergency vehicles and needed personnel.

Sheltering or other Assisting Agencies

American Red Cross / Salvation Army

- Once called in by IC/EOC, open and establish emergency shelter locations.
 - Help shelter staff establish a check-in station.

- Organize feeding, lodging, and public inquiries concerning sheltering populations – food, water, clothing, and/or medical assistance.
- Work with Public Health to provide shelter and supplies to vulnerable populations requiring additional resources.
- Coordinate provision of food, water, and/or other assistance as needed for emergency response personnel and relief workers.
- **PRE-EVENT** – Provide training to volunteers prior to emergency or disaster declaration.
- **DURING EVENT** - assist with on-site training to volunteers for disaster events.
- Provide recorded damage assessment information upon request.
- Coordination of mental health services (in cooperation with Ouray County Human /Human Services Department)

Note: The American Red Cross has a disaster coordinator and volunteers in Montrose as well as Shelter Trailers in Montrose (50 cots), Delta (50 cots), and Grand Junction (300 cots), which can presumably be mobilized if conditions warrant the establishment of a shelter providing housing and meals.

Ouray County School Districts

- Coordinate with Emergency Management, in cooperation with American Red Cross, to provide schools as temporary shelters, when needed.
- Provide buses for evacuation and transportation, when needed/if available.

Ouray County Fairgrounds/4H Event Center

- Evacuation Center staff to confer with County authorities regarding the need for involvement of the American Red Cross and other volunteer agencies.
- Open and assist in the management of the Event Center when opened as a shelter location during hazard events.
- Establish a check-in and information-gathering procedure.
 - Resident Log required with names, number of persons, address, contact information, and list of specific need.
- Coordinate supply needs with facility management, Ouray County, the American Red Cross, and volunteers.
 - Determine and arrange for physical resources: generators, portable showers, toilets.
- Assure that medical assistance is available.
- Operate kitchen to provide food for sheltered citizens.
- Serve as a point of animal and livestock collection.
- Provide for a heliport or base.

Service Animals, Pets, and Livestock Sheltering

The Pets Evacuation and Transportation Standards Act of 2006 requires local jurisdictions to aid individuals with service animals and for the sheltering and care of household pets and service animals during emergencies when a shelter has been established. Pet and service animal

sheltering and care in Ouray County has been assigned to Human Services, the American Red Cross, the Second Chance Humane Society (SCHS), and Colorado State University Cooperative Extension.

The primary Evacuation Centers for small and large animals are the Ouray County Fairgrounds and the Second Chance Humane Society. The staffing and management of the small and large animal Evacuation Centers will be performed by the Second Chance Humane Society and the Ouray County Cattlemen's Association (OCCA), respectively. A fee will be charged, or donations will be accepted to help defray feeding costs and other daily care expenses. Pet owners are directly responsible to attending veterinarians for any cost of medical care provided to pets in need of it. Owners, if available, will be asked to sign liability waiver/temporary custody forms for each pet left in the care of a shelter location (**SEE APPENDIX**). The costs for housing owned animals, as well as any legal releases, should the animals get sick or injured during their holding period, are the responsibility of the jurisdiction that is in charge of the shelter and may be eligible for State or federal reimbursement.

Normal veterinary medical care in a community is provided by private practitioners and clinics throughout the area. The majority of veterinary medical care provided by area shelters is done for their animals and is not provided for non-shelter animals. There are approximately three veterinary clinics in the Ouray County area (Ridgway Animal Hospital, Ouray County Veterinary Services, and Animals Wings). During a disaster, area veterinary medical care may become compromised. It will be on the local veterinarian community and Human Services to determine the extent of disruption of vet services and a potential need for local, regional, and/or State of Colorado assistance.

Each Animal Sheltering Facility should operate under the following assumptions:

- People should not be separated from their pets unnecessarily.
- An area for waste excretion must be identified for animals who do not utilize a litter box
- When possible, animals should be separated by species.
- All animals must be restrained – crates/kennels are preferred.
- All crates/kennels should be positioned to limit an animals view of other animals to reduce stress. Draped blankets over kennels can be utilized to block view.
- Pet owners will bring extra food supplies; Shelter facilities are responsible for water for animals.

Second Chance Humane Society - Small Animal Operations:

177 County Rd 10, Ridgway CO 81432 Phone: 970-626-2273

In addition to pets brought to the Evacuation Center by their owners, SCHS may assist with the evacuation of pets brought to evacuation assembly areas or found astray in the evacuation area. SCHS does not have the legal authority to enter private property for the purpose of removing an animal. SCHS may provide assistance to a law enforcement officer for the removal of a pet from private property.

SCHS is not able to recover or accept dangerous animals, wildlife kept as pets, or exotic pets, such as fish or reptiles. As a member of the Western Colorado Animal Resources (WeCARE) Coalition, SCHS can request access to an emergency response trailer. This trailer is outfitted with the supplies needed to set up a mobile animal shelter, including crates, medical supplies, food and water bowls, cat litter pans, and first aid kits. Located at the Mesa County Shelter in Grand Junction, this trailer is a limited resource that is available unless previously occupied for a different emergency incident.

Staffing: Staffing will be by volunteer members of the Second Chance Humane Society.

Ouray County Fairgrounds Director - Large Animal Operations:

It is estimated that the fairgrounds can accommodate up to 400 head of large animals. Promptly needed feed should be available from local ranches and corrals and fence panels are available at the fairgrounds. Local vets will be contacted to help with animal needs. During the wildfire season, most cattle are located in the western part of the LHMFPD near Horsefly Mesa. There are few roads in a large area and there will be little time to organize an evacuation. For the most part, cattle will be on their own. Horses, pigs, milk cows, sheep, goats, and even buffalo and llamas may also be evacuated by their owners.

Fairground Needs:

- **Staff Contact:** POC is TBD
- **Capacity:** Estimated capacity of ~400 head total with 80 in containment.
 - Animals welcome include llamas, pigs, sheep, camels, zebras, yaks, cattle, and horses. Other exotics must be contained (tubs or travel containers).
 - Large ranching operations in the county have own contingency plans and will release cattle to roam.
- **Staffing:** Staffing will be by volunteers, arranged by the Fairgrounds Director. Available roster currently has about 20 members. To operate as an evacuation site, fairgrounds needs 10 people (5 people on rotating 12-hr shifts).
 - **Police/Law Enforcement** - need one security officer to assist with traffic control/security.
- **Time:** Need two (2) hours lead time to prepare for animals to arrive. One hour notification to open and bring staff in, one hour to prepare set up at fairgrounds.
- **Requirements:**
 - Animals must be harnessed or contained.
 - Owners must have proof of ownership, health certificates, and vaccinations.
 - Feed/water will be provided, owner should bring any food for dietary restrictions or medications.

Expected Actions

- Fairgrounds and SCHS will be notified of impending Evacuation activities by the County Emergency Manager or Ouray County Sheriff.
- Shelter locations should be opened by primary staff member.

- Call volunteer/staff roster in preparation of shelter activation.
- Staff at shelter locations will establish a check in location and registration venue.
- Point person will notify Ouray County PIO of shelter capacity and when locations are operational.
 - Operational is defined as the capacity to accept animals at a given time.
- Shelters will continue to temporarily house animals during short-term evacuation activation. These animals will be released to their owners as they return to claim them if temporarily housed or will leave with owners who remain at the facility with their pets.
 - *For dispersal, owners must show proof of ownership – vaccination records, ID/contact information, branding, or other documentation indicating ownership.*
- Temporarily sheltering stray animals with no known owner for at least 3 days to give possible owners time to come claim them. The hold period may be 10 days for tagged animals.
 - *Stray animals are defined as “roaming with no physical restraint beyond the premises of animal’s owner or keeper.”*
- Termination:
 - As soon as possible, the temporary shelters will be closed, and the remaining animals will be transferred to the appropriate animal control authority or humane organizations to complete their hold period.

Abandoned Animals in Shelters

Animals abandoned at temporary animal housing areas associated with a human shelter will become property of the Human Services. They will be handled as per established protocols after 3 days. Any extension of the hold period will be decided on a case-by-case basis with input from the Humane Society (for small animals), Fairgrounds Director (for large animals) and/or local veterinarians.

Public Information and Notifications

Rapid dissemination of information about evacuations is critical to protect life and safety. The County will use a coordinated public information system to distribute emergency information, warnings, and instructions for the duration of an emergency. The following section provides an overview of public information dissemination and warnings.

Any disseminated information shall provide clear, concise, and accurate information on the existing situation in the disaster area, actions being taken by the authorities, and those to be taken by the public. Every effort shall be made to minimize and counter rumors, hearsay, and half-truth information.

Designated Representatives

The Public Information Officer (PIO) releases all emergency public information about local operations and assistance during a disaster. **All media inquiries must be routed through the designated PIO.** Additionally, the PIO will coordinate the printing of publications and flyers.

The identified PIOs for as of April 2024 Ouray County are:

PRIMARY	SECONDARY
Public Information Officer Jennifer Peterson jpeterson@ourayco.gov 970-318-6225	Emergency Manager Glenn Boyd gboyd@ourayco.gov 970-318-9603
BACKUP	BACKUP
Sheriff Sheriff Justin Perry jperry@ourayco.gov 970-325-7272	Interim County Manager Kara Rhoades krhoades@ourayco.gov 970-318-6501

Public Information and Outreach

All notifications which are provided to the public should include specific information related to the incident at large. This information may include the nature of the emergency, the location of the emergency or impacted area, what protective action to take/actions needed, where to find information or ask for help, and/or when the situation will be or is anticipated to be remedied. General messages should be easily edited and disseminated via all available methods.

Most notifications will reach only a small portion of the total population. Thus, it is imperative that multiple warning systems be used to reach the largest audience possible.

The PIO will share evacuation messaging through the following systems, as available, to notify the public:

- ☐ Social media – County, City, and Town webpages, X [Twitter], Facebook, Instagram
- ☐ Local broadcasts - radio stations
 - KUBC (580 AM), KKXK (94.1 or 99.3 FM) or KVNF (89.1 FM)
- ☐ Available county/community email listservs
- ☐ Portable bullhorns in communities
- ☐ Highway message signs
- ☐ Emergency Alert Systems – Ouray County Alerts
- ☐ Door to Door

A heavy reliance on mobile phone communications can be detrimental during large-scale emergency events. Cellular communication infrastructure can quickly be overwhelmed, preventing adequate channels of communication. Other methods of communication should be evaluated to ensure all responding agencies can collaborate effectively and receive notification of plan triggers and expected actions.

Social media serves as a major hub of communication for residents and visitors. Social media can quickly share photos, instructions, and descriptions of events across a wide audience; however, confusing, inaccurate, or misleading information is also likely to be shared simultaneously. County officials should designate a Public Information Officer (PIO) to quickly disseminate accurate information through all available social media channels to control the narrative of events.

Messaging Examples

The following sections provide specific language and messaging that can be edited and copy pasted for various messaging platforms.

Be Ready - Prepare to Evacuate/Preparedness Messaging

This stage has two main objectives:

1. Provide education on how to prepare in case of an emergency evacuation.
2. Notify citizens that an evacuation order may be coming in the near future.

During this stage, citizens should have heightened awareness and be advised to anticipate and listen to upcoming messages and warnings. Preparing animals and considering future actions should be planned. Public information should provide education on where citizens can access information and maintain awareness of the situation, but an evacuation is not being executed at this time.

Notification Example Language

Website, Facebook, Local News

“BE READY - “Prepare for Future Evacuations”

There is currently no evacuation order in place. Conditions locally may be hazardous – please monitor local media here for updates. You are advised there may be an evacuation order in the future.

Fire and law enforcement personnel are working in this area to provide specific information about when to leave and the route to take. You can prepare to evacuate by making a Go Bag:

- *Medications and personal hygiene items*
- *Infant and Child supplies – extra clothes, formula, diapers, wipes*
- *Pet supplies – harness/leash, vaccination records, food, medications*
- *Phone and chargers*
- *Important documents*
- *First Aid Kit*
- *Extra change of clothes*
- *Flashlight/headlamp and batteries*
- *Local Map*
- *Water and snacks*
- *Cash*
- *Glasses*

“BE READY

Officials are monitoring the local conditions – at this time there is no evacuation order in place. But you can still be prepared if conditions worsen. If officials suggest evacuating, it’s best to leave right away to avoid danger and keep roads clear for emergency responders. During big events there is no time for door-to-door warnings – be prepared to move you and your family quickly!

Vulnerable Populations language

“Residents with special concerns such as mobility and health issues, large animals/pets, or children should take note and prepare now. If you will require assistance to evacuate, please contact the Ouray County Sheriff’s Office at 970-325-7272 immediately.”

Evacuation Education Language

“We are heading into wildfire season – prepare your family in case of an emergency. If an evacuation is necessary, the following steps can help you leave safely and quickly!

- 1. Review your Household Evacuation Plan Checklist – include notes on where to go, who to contact, and where to meet if you are separated.*
- 2. Monitor local updates – make sure you’re signed up for Ouray County Alerts to receive emergency notifications!*
- 3. Pack a Go Bag – keep an emergency supply kit stocked and ready in case you must leave quickly. If you can’t pack up a Go Bag, make a list and review what will be included.*

“Wondering what to do if your power goes out? Follow these steps!

- Keep fridge and freezer shut to preserve your cold food*
- Turn off gas lines and propane tanks*
- Avoid overhead powerlines or electrical equipment*
- Stay updated with a battery-powered radio or cellphones*

“Ways to stay prepared for evacuation orders:

- Stay Informed – you’ll be advised of potential evacuation orders as early as possible. Listen to local radio or TV for updates from authorities.*
- Officials decide: Local officials, Law Enforcement, and Emergency Personnel decide when and where to evacuate based on the conditions, wind, and terrain.*
- Law enforcement role: Police enforce evacuation orders. Follow their directions right away.*
- Act fast: In severe conditions, there’s no time to waste. If advised to leave, do so without delay. Assistance is limited.*
- Don’t wait for orders: It’s safer to leave before a mandatory order is issued.*
- Stay alert: You may be directed to temporary assembly areas to await transfer to a safe location. Available roads away from danger may change.*
- Help Emergency Responders: Don’t return home until officials notify you that it’s safe to do so.*

Pets/Animal Evacuation Language

BE READY - *“Prepare for Future Evacuations – Pets and Livestock”*

“Prepare your pets for a possible evacuation! Ensure you know what to take and where to go, if evacuating your animals. Small domestic animals can be taken to Second Chance Humane Society, and large domestic animals can be taken to the Ouray County Fairgrounds. Evacuation Shelters may have limited capacity and require proof of ownership and equipment (crates and leashes)! Be proactive – put together pet evacuation kits and arrange for transportation assistance if needed. Evacuation kits should include medications or medical food, collar/harness, vaccination records, proof of ownership, and crate/kennels.”

Get Set - Voluntary Evacuation

This stage has two main objectives:

1. To notify citizens of worsening conditions and an active evacuation order
2. To encourage mobilization to reduce time delays and resource expenditures.

Citizens should be evacuating from areas of concern. The focus of evacuation should be on those in an area of concern, those who will take longer to evacuate, or those who will require assistance to evacuate.

Notification Example Language

GET SET - “Voluntary Evacuation Order in Effect”

There is significant danger to your area. A VOLUNTARY EVACUATION ORDER has been ordered for these areas: [INCLUDE SPECIFIC NEIGHBORHOODS OR ZONES AT RISK].

Please evacuate immediately. For temporary shelter go to the 4-H Event Center (22739 Hwy 550 Ridgway CO) by way of [list route]_____:

(CHECK APPROPRIATE BOX OR BOXES)

- ☐ *County Road 1 North to Colona and proceed to the Evacuation Center at the 4-H Event Center in Ridgway.*
- ☐ *County Road 1 South down the Escarpment and proceed to the Evacuation Center at the 4-H Event Center in Ridgway.*

*Residents should voluntarily relocate to a shelter or with family/friends outside of the affected area. If you don't check in at the Evacuation Center, it is important that you notify the Sheriff's Office at 970-325-7272 about where you will be staying so we can contact you if necessary. **Resources are limited – do not wait to request assistance.***

You will be kept advised as conditions change. Area radio stations have been asked to broadcast periodic updates. Listen to KUBC (580 AM) or KKXK (94.1 or 99.3 FM).

Supplemental Language

There is significant danger to your area. A VOLUNTARY EVACUATION ORDER has been ordered for these areas: [INCLUDE SPECIFIC NEIGHBORHOODS OR ZONES AT RISK].

Please evacuate now if you:

- ☐ *Have children or elderly family*
- ☐ *Are in forested or recreational areas*
- ☐ *Have health or mobility concerns*
- ☐ *Live in an area with only one way in/out*
- ☐ *Will be evacuating large domestic animals*

Supplemental Language

A VOLUNTARY EVACUATION ORDER has been ordered for these areas: *[INCLUDE SPECIFIC NEIGHBORHOODS OR ZONES AT RISK]*. If you require assistance to evacuate, contact the Ouray County Sheriff's Office at 970-325-7272 immediately. **Resources are limited – do not wait to request assistance.**

Supplemental Language

A VOLUNTARY EVACUATION ORDER has been ordered for these areas: *[INCLUDE SPECIFIC NEIGHBORHOODS OR ZONES AT RISK]*.

[SPECIFIC ROAD NAME] roadways are inaccessible – use detour *[SPECIFIC ROAD NAME]* to evacuate to the *[NORTH/SOUTH/WEST]*.

If you require assistance to evacuate, contact the Ouray County Sheriff's Office at 970-325-7272 immediately. **Resources are limited – do not wait to request assistance.**

Pets/Animal Evacuation Language

GET SET - *“Prepare for Future Evacuations – Pets and Livestock”*

“Ouray County Residents! A voluntary evacuation order is in effect for *[LOCATION]*. Make your plans for bringing pets (cats and dogs) to Second Chance Humane Society. Large domestic animals/pets will be sheltered at the County Fairgrounds.

If you are evacuating with pets or animals, bring crates/kennels, medications, special food (if needed), vaccination records, tags, and proof of ownership. All animals must be leashed or harnessed.

#Evacuation #OurayCounty.”

GO NOW - Mandatory Evacuation

This stage has one main objectives:

1. To instruct all citizens at risk of an active evacuation order

This means that the risk is imminent and threat to life and/or property is inevitable. Citizens at this time should be immediately leaving the area as soon as possible. Citizens should be evacuated from areas of concern. The focus of evacuation should be on those in an area of concern, those who will take longer to evacuate, or those who will require assistance to evacuate.

GO NOW “Mandatory Evacuation Order in Effect”

A MANDATORY EVACUATION ORDER has been ordered for these areas: [INCLUDE SPECIFIC NEIGHBORHOODS OR ZONES AT RISK]. Leave the area immediately!

Evacuation routes [Northbound/Southbound Hwy 550/other] are in use – Drive safely and pay attention!

[Southbound Hwy 550 does not allow RVs, campers, or trailers]

If you need temporary shelter the Ouray County Fairgrounds [or other shelter options] is open and providing shelter to residents.

If you choose to ignore this order, you must understand that emergency services will not be available and there is a good chance you could not be rescued. Volunteers will NOT be allowed to enter the area to provide assistance.

Pets/Animal Evacuation Language

GO NOW - “Mandatory Evacuation in Effect – Pets and Livestock”

“Ouray County Residents! A mandatory evacuation order is currently in effect for [LOCATION]. If you are evacuating with pets that need sheltering, remember:

- Cats and Dogs must go to Second Chance Humane Society
- Large domestic animals must go to Ouray County Fairgrounds

All animals must be leashed or harnessed. Bring your animal’s crate/kennels, medications, special food (if needed), vaccination records, tags, and proof of ownership.

Emergency crews will not be available to rescue animals. Owners are responsible for the transport of animals to shelter locations. Be safe and go now!

#Evacuation #OurayCounty #PetEvacuation.”

Shelter in Place - Shelter in Place, Stay Put Messaging

In some cases, it may be necessary to instruct citizens to shelter at home or to remain in place. The following examples may be used to share this message.

This stage has two main objectives:

1. Provide education on existing or forecasted hazardous conditions.
2. To instruct citizens to stay at home or remain in place until conditions improve.

Education Example Language

Before the Event – Be Ready

1. **Stay Informed:**
 - Monitor local news and weather reports regularly for updates on the weather situation.
 - Understand the difference between weather watches and warnings issued for the area.
2. **Emergency Kit:**
 - Prepare an emergency kit that includes non-perishable food, water (at least one gallon per person per day for at least three days), a flashlight, batteries, a first aid kit, medications, and personal hygiene items.
3. **Family Communication Plan:**
 - Develop a communication plan with family members regarding what to do, where to go, and how to communicate if you are not together when a severe weather event occurs.
4. **Home Inspection and Maintenance:**
 - Regularly inspect your home for potential vulnerabilities, such as loose shingles, debris piles, or damaged roofing, and make necessary repairs.
 - Clear gutters and drains to prevent water backup or fuel loads near structures.
5. **Safe Room:**
 - Identify a safe room within your home to take shelter. This room should be on the lowest floor, away from windows and exterior doors, and preferably have no outside walls, such as a bathroom, closet, or interior hallway.

During the Event

1. **Stay Indoors:**
 - Go to your designated safe room immediately.
 - Bring your emergency kit with you.
2. **Seal Windows and Doors:**
 - Close and lock all windows and exterior doors.
 - If you have time, board up windows with plywood or metal shutters to prevent glass breakage.
3. **Monitor Updates:**

- Use a battery-powered or hand-crank radio to stay updated on the weather situation and instructions from local authorities.
4. **Conserve Resources:**
 - Use resources sparingly, especially if the severe weather event is expected to last several days. Ration food, water, and battery power.
 5. **Avoid Floodwaters:**
 - If your area is experiencing flooding, do not go into your basement or any room if water covers the electrical outlets or if cords are submerged. Avoid contact with floodwater, as it may be contaminated.

After the Event

1. **Wait for Clearance:**
 - Do not leave your safe room until you have received official word from local authorities that it is safe to do so.
2. **Inspect for Damage:**
 - Carefully inspect your property for damage. Take photos for insurance purposes and make temporary repairs to prevent further damage, where possible.
3. **Check on Neighbors:**
 - If it is safe, check on neighbors, especially those who may require additional assistance, such as the elderly or individuals with disabilities.
4. **Report Hazards:**
 - Report downed power lines, broken gas lines, or other hazards to the appropriate authorities.

Notification Example Language by Hazard Type

Social Media Prompt 1: Severe Weather Warning

⚡ Severe Weather Alert ⚡

Attention residents of [Community Name]: Due to the imminent threat of severe weather, we are issuing a **TEMPORARY SHELTER-IN-PLACE** advisement effective immediately. Please move to an interior room on the lowest floor of your home, away from windows. Stay tuned for updates and remain indoors until further notice. Your safety is our priority. #SevereWeatherSafety #ShelterInPlace #[CommunityName]

Social Media Prompt 2: Hazardous Material Incident

“Hazardous Material Leak – Urgent Community Notice”

URGENT: A hazardous material incident has occurred near [Location/Area]. All residents within the [general area description/neighborhoods/cross streets] area are advised to **SHELTER IN PLACE NOW**. Close all windows and doors and turn off HVAC systems to avoid outside air intake. Stay inside and await further instructions. Follow us for real-time updates. Your cooperation is vital for your safety. #HazardousLeak
#[CommunityName]

Social Media Prompt 3: Active Threat Situation

“Immediate Safety Alert: Active Threat”

Attention [Community Name] residents: Due to an active threat in the vicinity of [specific area], all individuals are advised to **SHELTER IN PLACE** immediately. Lock all doors and windows, turn off lights, and remain quiet and out of sight. Do not leave your location until you receive an all-clear signal from local authorities. Please do not call 911 unless you have a life-threatening emergency. Stay alert for official communications.
#ActiveThreat #[CommunityName]

Evacuation Routes

There are very limited evacuation routes available for Ouray County. This section identifies key evacuation routes that may be utilized by different areas of the county which may be at risk during specific events. Additional information is provided with the estimated time (in hours) it would take per route.

Routes and Maps

Depending on the hazard event in play, evacuation routes may change as the incident progresses. Tributary roads should be identified in local developments and treated similarly to facilitate a safe and orderly evacuation. Evacuation route maps can be found in the appendix.

Inbound Emergency Access Routes - If possible, one lane on every evacuation route will be kept available for inbound emergency vehicles. The inbound routes will be used for authorized emergency travel, including ambulances, buses, fuel trucks, tow trucks, etc. There may be circumstances where both lanes of any given road/highway will be used for evacuation purposes or circumstances where the road is not wide enough for two-way traffic.

Restricted Access Areas

There are several areas at higher risk due to limited transportation corridors throughout Ouray County. Many of them include, but are not limited to the areas identified below:

Area Name	# of Ways In & Out	Road Identifiers
Black Lake	2	CR 17 North or CR 17 South
Colona	2	US Hwy 550 North, US Hwy 550 South, or County Road 1
City of Ouray	3	US 550 North, US 550 South, or CR 17
Elk Meadows	1	CR 5
Idlewild/KOA	2	CR 23 or CR 17
Log Hill Mesa	3	CR 1, CR 24, or CR 22
Mineral Farms	1	CR 361
Park Estates	2	CR 17 North or CR 17 South
Panoramic	1	CR 14
Pleasant Valley	1	CR 24
Ponderosa Village	2	US Hwy 550 North or US Hwy 550 South
Ridgway Reservoir	2	US Hwy 550 North or US Hwy 550 South
Town of Ridgway	4	US HWY 550 North, US Hwy 550 South, US Hwy 62, or CR 5
Whispering Pines	1	US Hwy 550 North, US Hwy 550 South, or CR 17

Means of Controlling Flow of Evacuees - The evacuation of large numbers of people from vulnerable areas will stress the limited capabilities of roadways available for this purpose, potentially requiring additional time to complete an evacuation. Consequently, evacuation must be initiated as soon as feasible upon recognition of the threat, and must continue to function efficiently until completion. In order to manage the flow of evacuees in a safe and orderly manner, evacuation zones will be established by Incident Command. These zones will be identified in advance of a threat whenever possible.

Disabled Vehicle Removal - Tow trucks and/or those resources that can provide similar services may be essential during an evacuation. The function of this service would be to remove disabled vehicles and assist with the repair of vehicles so the evacuation routes are kept moving. Limited fuel supplies could also be delivered.

Large-Scale Events and Conditions

Tourism is a large part of the county's economic makeup. Visitors are largely concentrated in the spring through fall months, and the most visitors in attendance for the County Fair and the 4th of July.

Ouray County Fair

The county hosts a large western fair and rodeo every September over Labor Day Weekend at the Ouray County 4H Events Center and Fairgrounds in Ridgway.

Ouray County 4th of July Celebration

Ouray County's annual 4th of July parade in the City of Ouray draws a large population to the center of the city. The parade typically traverses Main Street from the early morning to mid-afternoon. The local population during 4th of July exceeds 25,000.

It is important for Ouray County Road and Bridge to have CR17 and CR23 open with dust control applied (for visibility and air quality) prior to the 4th of July event and related traffic pattern. In excess of 25,000 people attend the 4th of July events in the City of Ouray which exceeds the capacity of US 550. A high volume of knowledgeable traffic use CR17 to/from Whispering Pines or CR17 and 23 to/from Ridgway as high volume alternate routes.

Challenges for Evacuation during 4th of July/County Fair Events

It is crucial to understand the event-specific concerns the county and emergency responders may face during these large-scale events. While these celebrations are a source of revenue, recreation, and pride, they pose unique challenges and ramifications for evacuation purposes. An overview of potential challenges faced by emergency responders is below:

- **Crowd Management:** Large gatherings increase the risk of stampedes, lost children, and conflicts among attendees. Emergency responders must be prepared for crowd control and quick intervention in disputes or emergencies.
- **Traffic Congestion:** The influx of visitors can lead to significant traffic congestion, complicating emergency vehicle access to the event site and surrounding areas.
- **Fire Hazards:** Fireworks pose significant fire risks, including the potential for wildfires in dry areas, structural fires from misfired rockets, and personal injuries from mishandling fireworks.
- **Noise Concerns:** The loud noise from fireworks and concerts can make communication difficult, both for emergency responders coordinating efforts and for the public trying to hear instructions or warnings.
- **Alcohol-Related Incidents:** Alcohol consumption often increases during celebrations, leading to a rise in DUI incidents, public intoxication, and related accidents or altercations. Inebriated persons will also have difficulty understanding emergency warnings.
- **Heat-Related Illnesses:** Extreme heat can pose significant health risks, especially in crowded outdoor events with limited shade or hydration options, leading to heat exhaustion or heatstroke cases.
- **Terrorism and Security Threats:** High-profile public events are potential targets for terrorist attacks or other security threats, requiring heightened vigilance and extensive security measures.

Pre-event planning, establishing clear communication channels, designating emergency access routes, and ensuring the availability of sufficient emergency personnel are all required to ensure safe and effective evacuation.

Large Scale Event Specific Actions

Pre-event

- City of Ouray should consider pre-staging buses/emergency vehicles in Ouray/Ridgway for 4th of July or County Fair.
- Set up road barriers in key locations and have a clear roster of barrier locations
- Designate key point of contact, identify backup, identify PIO to tap in case of emergency
 - *Particularly in case of staff vacation time, sickness, or unavailability*
- Ensure all equipment is full/loaded or equipped to go into use. Tankers full, engines gassed up, etc.
- Ensure all designated staff have clear uniforms (orange or reflective vests) to indicate status.
- Pre-identify a staging area for a base of operations.
- Prepare a roster of all agencies in attendance.
- Pre-stage signage at key intersections.
- Staff should closely monitor the situation to detect any development of potential hazard issues.
- If during RED FLAG conditions – disperse specific information to tourists of hazardous conditions. Issue a Burn Ban.

Mid-event

- Notify Designated IC of hazardous conditions – activate EEP
- Notify applicable surrounding counties/communities/shelters of conditions – notify them of incoming traffic from evacuation orders.
- Identified staff to work the event should be contacted by the IC (or alternate) and made aware that the EEP and subsequent level has been activated.
 - All staff should tune into radio or check in via cellphone for instructions from IC/EOC
 - All staff should assist with traffic control and evacuation procedures.
- Evaluate and identify need for state resources – contact CDOT, Colorado State Patrol or Colorado Emergency Management Office
- Designated PIO to coordinate messaging.
 - Utilize social media, text alerts, and website for general conditions messaging.
 - Utilize bullhorns, emergency text alerts, fire sirens for immediate alerts.
 - Contact local radio to broadcast messaging regarding conditions and evacuation level.
- Identify locations where the largest congregations of people are located (parade route, fairgrounds, downtown, etc.)
 - Persons and vehicles located closest to areas at risk should be evacuated first. Messaging should be presented for all attendees to return to their vehicles and tune into emergency alerts/local radio for more information.

- Place barriers to entrance lanes/streets identified at risk to prevent people from going into at risk areas.

Post-event

- Areas that have been evacuated should remain closed off until the emergency event has ended and conditions are safe to return to the area.
- Designated staff including law enforcement and fire rescue teams shall inspect/evaluate areas before vehicles/persons may return to the area
- Debris management activities are to occur – follow guidance from Road and Bridge Depts.
 - In the event of flood conditions – the ground may be too saturated to return with heavy vehicles until drying occurs.
 - In the event of hazardous material incident – remnant contaminants may be present and should be evaluated by qualified HAZMAT team
 - In the event of wildfire – deadfall, ash, and damaged equipment may pose risks and should be removed prior to reentry.
- All staff who assisted with event shall report time, labor, and expenses to EOC and assist with After Action Report.

Example instructions for County Fairgrounds during Evacuation:

Due to hazardous conditions, Ouray County recommends attendees evacuate from the fairgrounds.

All spectators seated in the Ouray County Grandstands should leave their seating in the grandstands and proceed to the nearest exit on either the north or south side of the grandstands. Do not run but leave the grandstands area as quickly as possible.

Please proceed to your vehicles quickly and safely. Take shelter in your vehicles or trailers.

All vehicles should exit the in-field parking areas towards the east gates which exit the Fairgrounds onto Hwy 550.

Evacuation Center and Shelter Information

The American Red Cross, in coordination with the Ouray County Office of Emergency Management, has established priority evacuation/shelter centers. This list should be used as a first measure to determine sites and inform the public. However, it may be necessary to utilize the neighboring county's evacuation shelters.

The American Red Cross has a disaster coordinator and volunteers in Montrose as well as Shelter Trailers in Montrose (50 cots), Delta (50 cots), and Grand Junction (300 cots), which can presumably be mobilized if conditions warrant the establishment of a shelter providing housing and meals.

Primary Evacuation Sites – Within Ouray County

	Name	Address	Capacity	Contact	Specific Notes
City of Ouray	Ouray School District R-1	400 7 th Ave Ouray CO	Evac – 100+ Post Impact – 25	Tod Lokey Superintendent 970-318-6896	Showers are available
	Ouray Elks Lodge #492	421 Main St Ouray CO	Evac – 125 Post Impact – 35+	Julie Wesseling 970-369-2354	Not ADA compliant No showers
	Ouray Community Center	320 6 th Ave Ouray CO	Evac – 292 Post Impact – 68	Parks and Recreation Department 970-325-7211	Same location as police dept, fire dept, and town admin building
	Ouray County 4-H Event Center	22739 Hwy 550 Ridgway CO	Evac – 270 Post impact – 70	Fairgrounds Manager 970-626-3304	Allows Pets and Animals Large Animal Shelter
City of Ridgway	Ridgway School District – Secondary School	1200 Green St Ridgway CO	Evac – 150 Post impact – 100	Susan Lacy, Superintendent Russell Randolph, Principal 970-626-5788	
	Ridgway School – Elementary	1115 W Clinton St Ridgway CO	Evac – 400+	Susan Lacy, Superintendent Perri Gipner, Interim Principal 970-626-5468	

Secondary Evacuation Sites – Outside Ouray County

County	Shelter Name	Address	Notes/Capacity
San Miguel County	Telluride High School	725 W Colorado Ave, Telluride CO	Cap-200
Montrose County	Friendship Hall	1001 N 2 nd St, Montrose CO	Evac – 1,800 Conference Center
Montrose County	Montrose Recreation Center	16350 Woodgate Rd, Montrose CO	
Montrose County	St. Paul's Episcopal Church	2900 Sunnyside Rd, Montrose CO	
Montrose County	Montrose Christian Church	2351 Sunnyside Rd, Montrose CO	
Montrose County	Victory Baptist Church	2890 North Townsend Ave, Montrose CO	
Montrose County	Hope Lutheran Church	600 North 2nd St, Montrose CO	
Montrose County	Columbine Middle	610 York St, Montrose CO	
Montrose County	Centennial Middle	1100 S 5th St, Montrose CO	
Montrose County	Montrose High School	600 S Selig Ave, Montrose CO	

