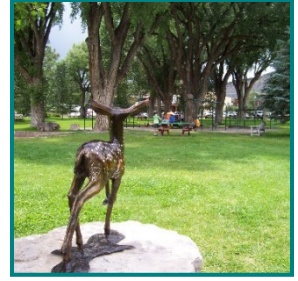

PARKS, PARKS, TRAILS, AND OPEN SPACE COMMITTEE
MEETING AGENDA PACKET
NOVEMBER 5TH, 2020
6:00 PM



Due to CoVID-19 this meeting will be held online via Zoom Meetings

Join Zoom Meeting

<https://us02web.zoom.us/j/88458107425?pwd=NE93OEFpclN2clE2d2lwUkRwWjJqZz09>

Meeting ID: 884 5810 7425

Passcode: 691894

Dial by your location

+1 669 900 6833 US (San Jose)

+1 253 215 8782 US (Tacoma)

+1 346 248 7799 US (Houston)

+1 408 638 0968 US (San Jose)

+1 646 876 9923 US (New York)

+1 301 715 8592 US (Germantown)

+1 312 626 6799 US (Chicago)

Meeting ID: 884 5810 7425

Passcode: 691894

Committee Member Meeting Packet

Agenda Item #2:

PARKS, TRAILS, AND OPEN SPACE COMMITTEE
MEETING MINUTES
SEPTEMBER 3RD, 2020
6:00 PM



Due to CoVID-19 this meeting will be held online via Zoom Meetings

Join Zoom Meeting
<https://us02web.zoom.us/j/83581664037>

Meeting ID: 835 8166 4037

Dial by your location
+1 669 900 6833 US (San Jose)
+1 253 215 8782 US (Tacoma)
+1 346 248 7799 US (Houston)
+1 408 638 0968 US (San Jose)
+1 301 715 8592 US (Germantown)
+1 312 626 6799 US (Chicago)
+1 646 876 9923 US (New York)
Meeting ID: 835 8166 4037

Find your local number: <https://us02web.zoom.us/u/kfSd4tHeh>

Committee present: Jared Coburn, Doug Canright, Sue Husch, Erin Smith, Robb Austin.

Town Staff: Chase Jones

- I. Call to Order: *6pm*
- II. Approval of Meeting Minutes from July 7th, 2020

Robb moved to approve the minutes
Erin seconded
All present voted in favor

- III. Proposed Bike Park – Matt McIsaac, Trisha Oakland

Chase started by sharing that he did not find any land restrictions that would prevent a bike park from being located at this location, only that it will need to be open to the general public.

Matt detailed that they have received over 175 signatures of support. The group has started a website (ridgwaybikepark.com) and raised \$6500 of the \$7500 needed for a design. Fundraising is happening through COPMOBA or by check. They have spoken with the known larger user groups (soccer, baseball, softball and skatepark) and received support for the project as long as it does not directly encroach on the fields or future fields.

Chase is to talk with Preston about getting this topic on the next Town Council agenda for Council consideration.

IV. Athletic Field Gazebo Plaque Request to Recognize Richard and Mary Spirek

Clarified the request is for the Hartwell Park Pavilion as mentioned on the application not for the Athletic Park as written on the Parks Committee Agenda. The group also wanted the applicant to consider placing a brick near the fountain.

The committee members were in favor of the request.

V. Baseball Update

Infield material is down and the Town graded with large equipment. Marty is now dragging to get as flat as possible. The bases will be installed once dragging is complete.

Jared mentioned that the school has put up shade structure in their field. The

VI. Athletic Park Pavilion Update

Volunteers helping stain and the project is on schedule.

VII. New Business

- Heritage irrigation is out to bid for Phase 1.*
- GOCO SCC grant – Weaver trail maintenance, editing and resubmitting application from last year.*
- Water restrictions – KVNf has had good success with volunteer restrictions, get volunteer restrictions advertised more so, pamphlets to educate, capitalize on seasonal shift to start turning down watering amounts 25% decrease or 30% for turf to promote plant health. The Community Garden has already frozen the last two nights. Members to consider helping by posting on Facebook (Ridgway-Ouray residents). The group did not recommend going forward with mandatory restrictions, instead more of a call to action about getting word out.*

VIII. Old Business

Irrigation controller incentives – There are currently no state or federal programs. This would need local funding. Erin expressed that even \$250 would help.

Cottonwood Creek – The Town is going to continue to connect with Alice Billings about water. Clean up of fallen trees on Moffat still on to-do list.

Members of the Committee shared that the Facebook page is hard to find. Chase will share with staff who manages the page.

IX. Adjourn: 7:14pm

Agenda Item #3:

Agenda Item #4:



**Ridgway Community Garden "Children's Play Area" Proposal to the Town of Ridgway Parks
Committee 11.5.20**

The Ridgway Community Garden has received grant funding to build a "Children's Play Area" at the garden. This would be a place for children of garden members to play and explore while their guardians are gardening. The Steering Committee compiled ideas from school aged children and conducted a focus group of community members to gather feedback on this space in early 2020. As a result of these meetings, the Steering Committee is proposing to build a sand pit area, a sensory walking path and a small children's playhouse. We are asking the Town of Ridgway to approve the design and features. See Attachment A for the aerial delineation and approximate placement of the play area.

Attachment B: The playhouse structure that has been designed is an elevated 8' x 10' structure with a pitched roof. The highest point of the roof is 7' 10". The roof and siding materials would be matched with the work shed that is currently at the garden. The design does include 4 sonotube piers filled with concrete at each corner as footers. There is also 2' x 3' concrete pad under the stairs to enter the playhouse. We are asking for approval of using permanent concrete for this structure.

Attachment C: As an alternative to a permanent structure, the Steering Committee has looked at Tipi's from Colorado Yurt Company. If the Town would prefer that we not build a permanent structure, we would like approval to place a Tipi as the "playhouse".

Attachment D: Information and pictures of the sensory path and sandpit design.

Thank you for your partnership and consideration,

Community Garden Steering Committee Members:

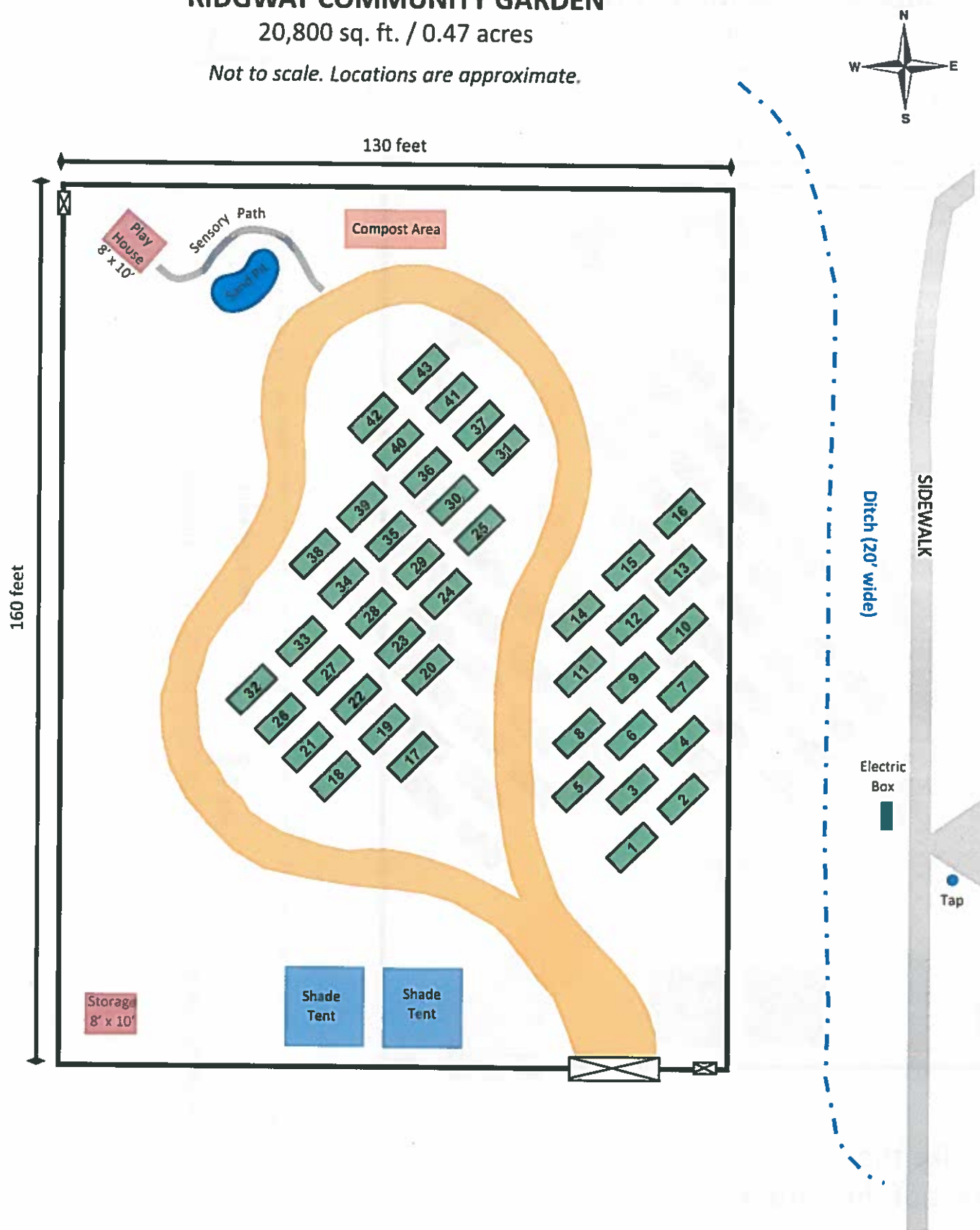
Agnieszka Przeszlowska
Christine Lance
Kurt Jacobsen
Amy Jacobsen
Judi Chamberlin
Aimee Quadri

Website: <http://www.ridgwaygarden.org/>

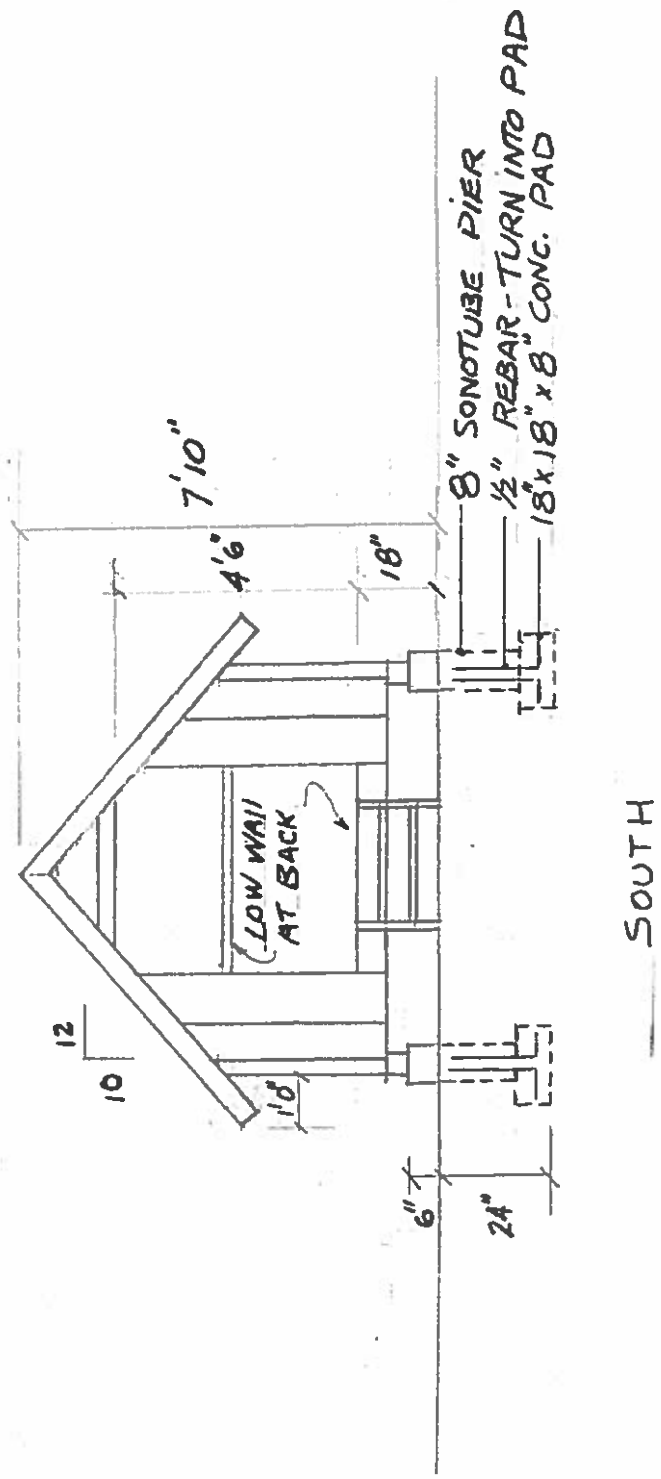
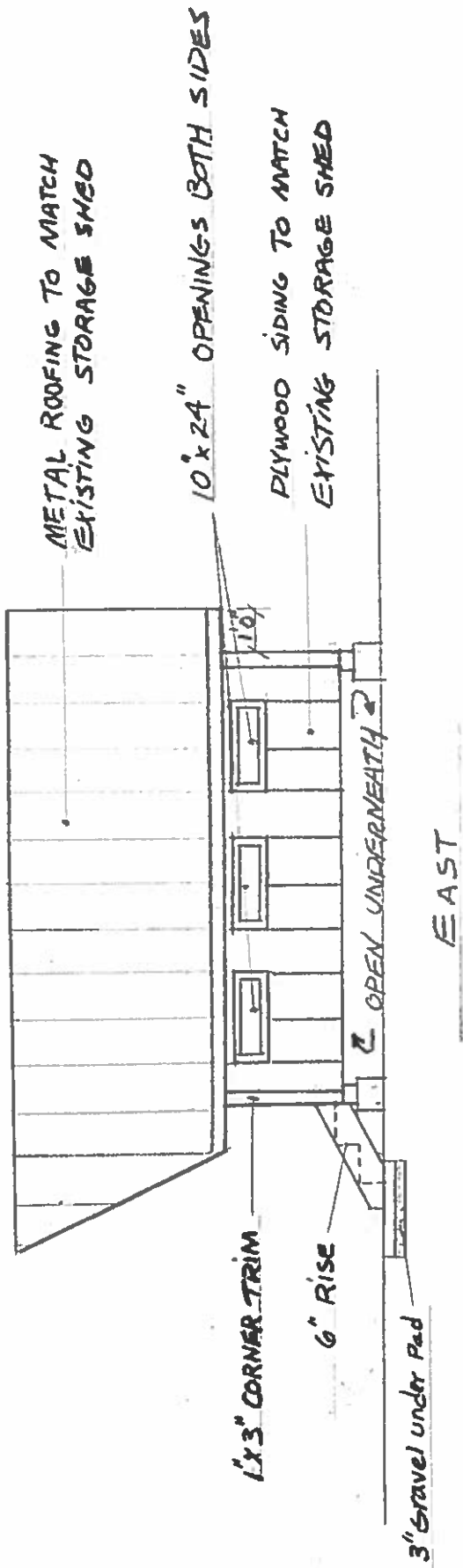
RIDGWAY COMMUNITY GARDEN

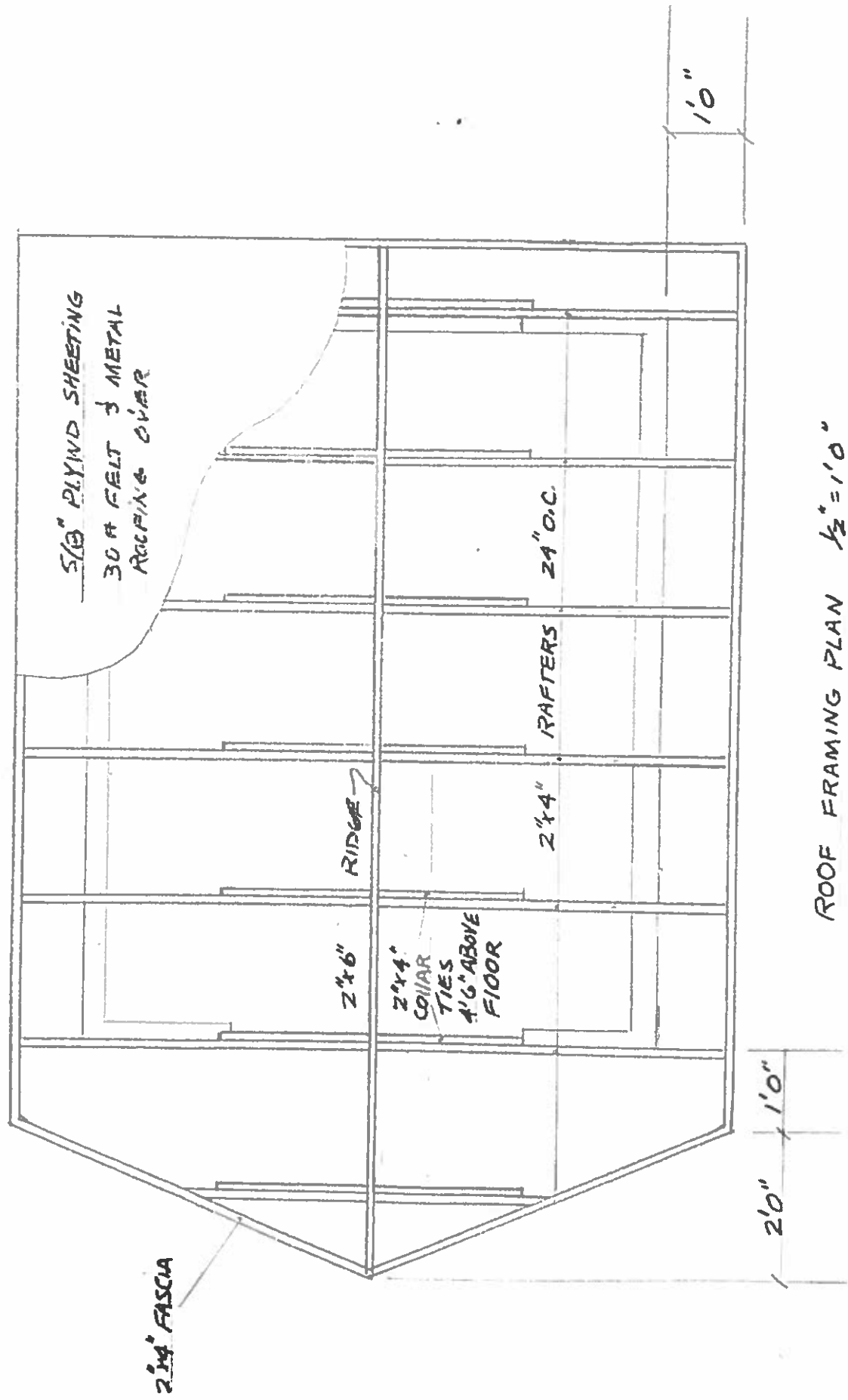
20,800 sq. ft. / 0.47 acres

Not to scale. Locations are approximate.



Ver. 9/30/2020

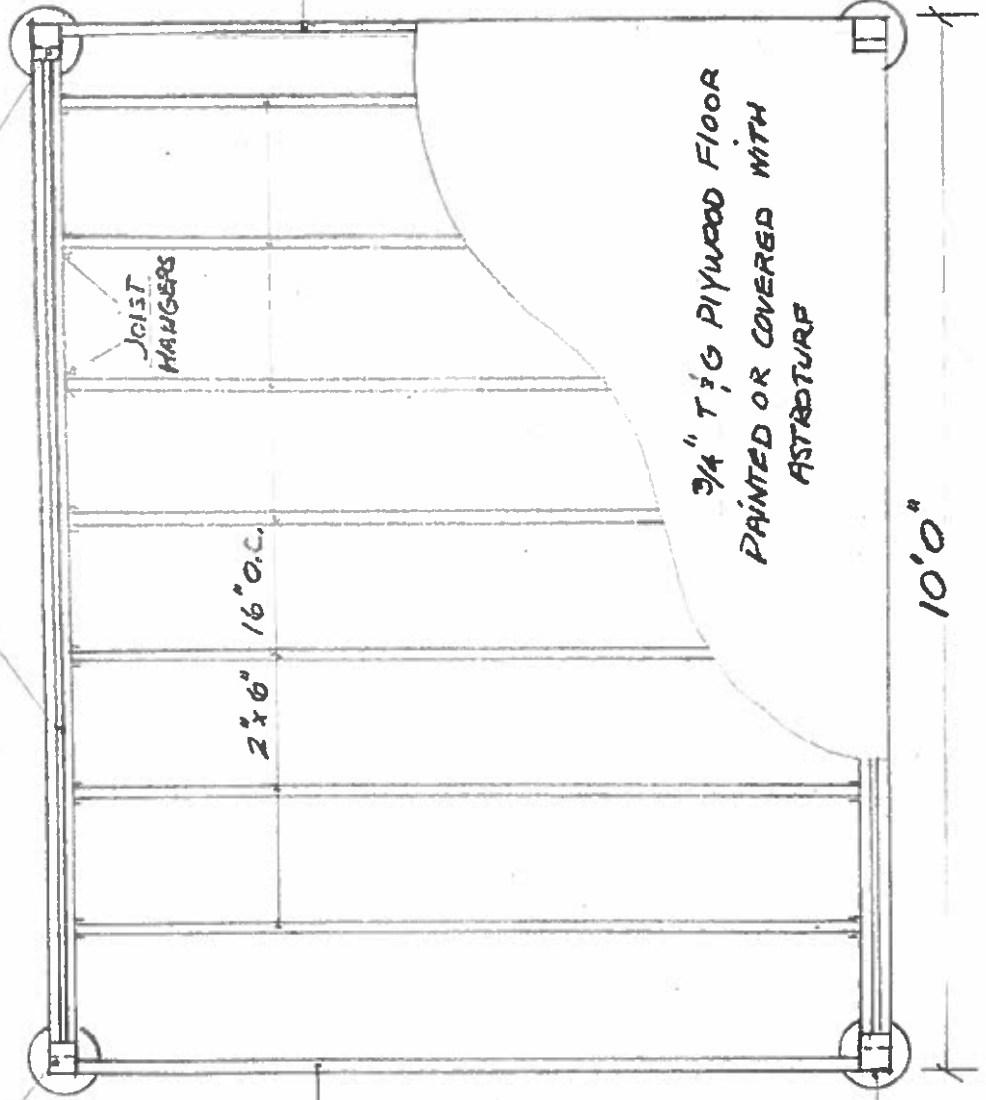




ROOF FRAMING PLAN $\frac{1}{2}" = 1'0"$

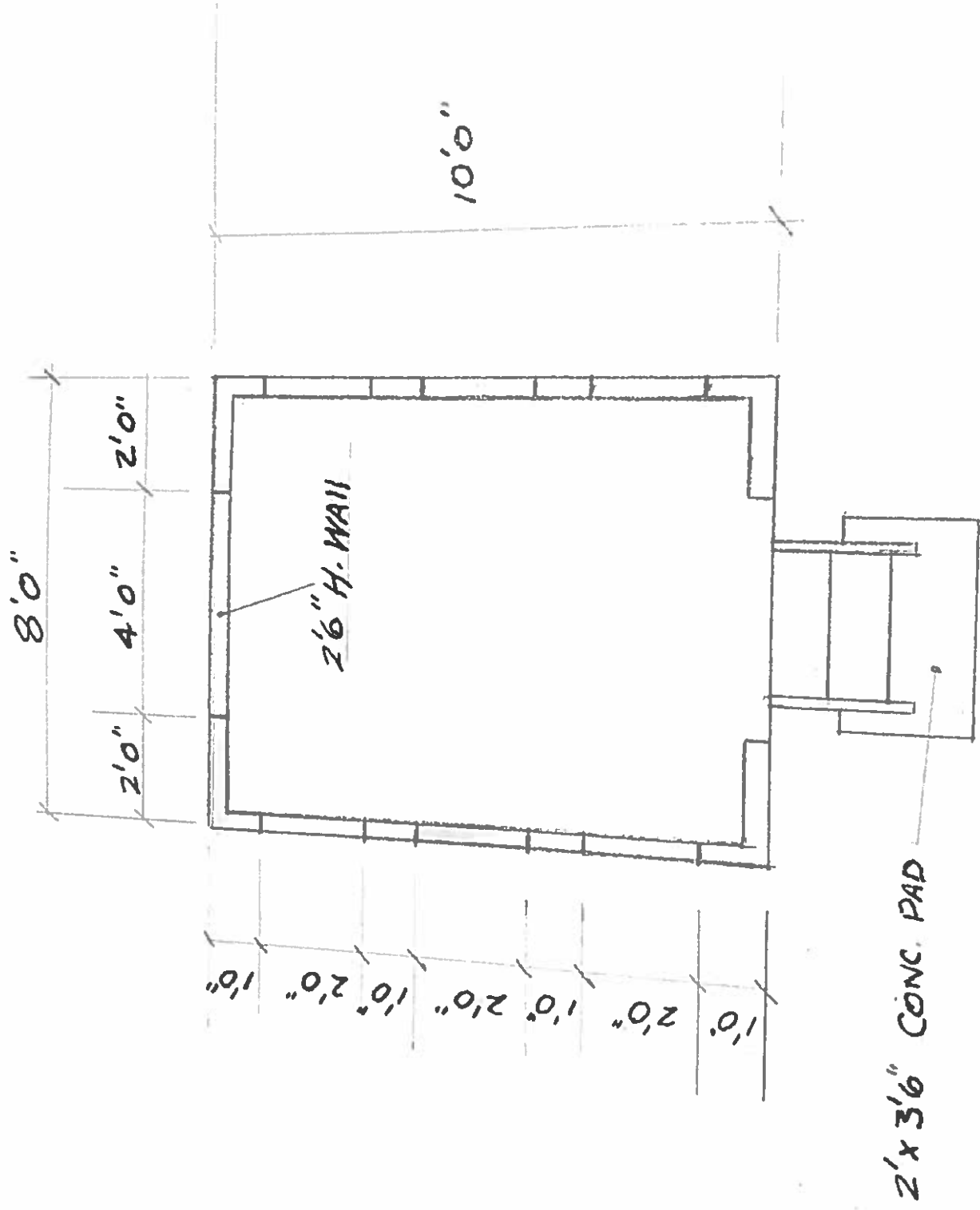
DOUBLE 2"x8" W 1/2" SPACER
NOTCH ENDS INTO 4"x4" POSTS TYP.

4"x4" POSTS



USE 4'x4" ELEVATED POST
BASE ON TOP OF SONOTUBE

FLOOR FRAMING PLAN 1/2" = 1'0"



FLOOR PLAN $\frac{1}{4} = 1'0"$



YURTS **TIPIS** TENTS SAFETY PRODUCTS

AP spoke with Steven on Oct. 27, 2020

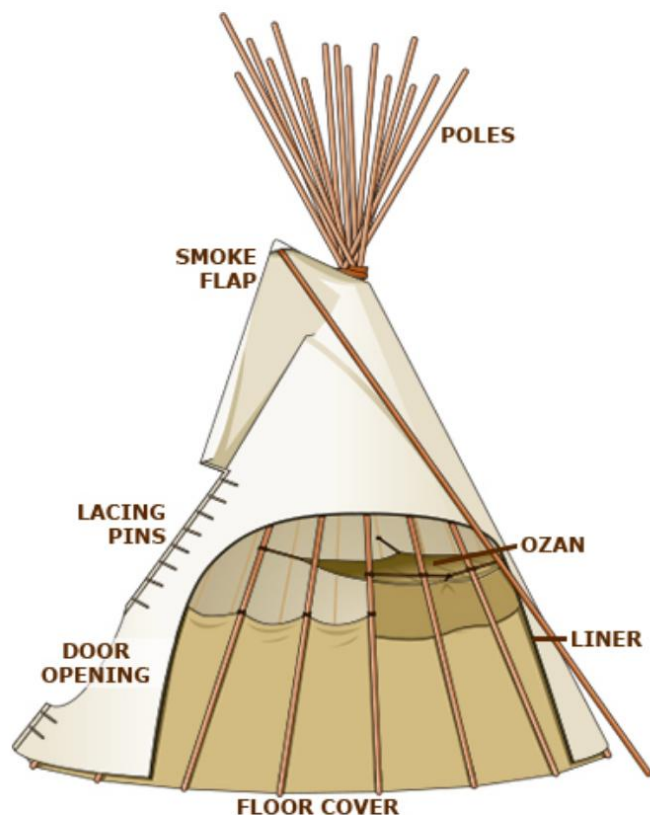
970-438-0959  

Delivery: we can pickup in Montrose

Ordering: 3 wks - 5 wks if painted

Painted: add'l \$200-\$600

Setup: they provide instructions



Want Your Tipi Painted?

We offer many designs or we can create a custom design just for you.

Learn more [HERE](#)

Tipi Price Calculator

Tipi Package Price Calculator

A Tipi Package consists of a tipi cover with door cover, and the accessories necessary to pitch your tipi (the basics). You must select at least these basic items to get the package pricing. When you purchase these items together you receive a 5% discount on these items and all other items from the package calculator that you add to the basics. If you are interested in individual items, please use the Tipi Component Price Calculator below. NOTE: prices do not include shipping. **Use 27ft heavy duty poles for 24ft tipi to save on shipping overlength poles.*

Tipi Size :

12' Diameter 

12' Tipi Cover Fabric :

15 oz Marine Sunforg 

560.00

12' Tipi Poles :

Shipped from Colorad 

380.00

12' Tipi Liner :

None (\$0.00) 

0.00

12' Tipi Ozan :

None (\$0.00) 

0.00

12' Tipi Floor Cover :

None (\$0.00) 

0.00

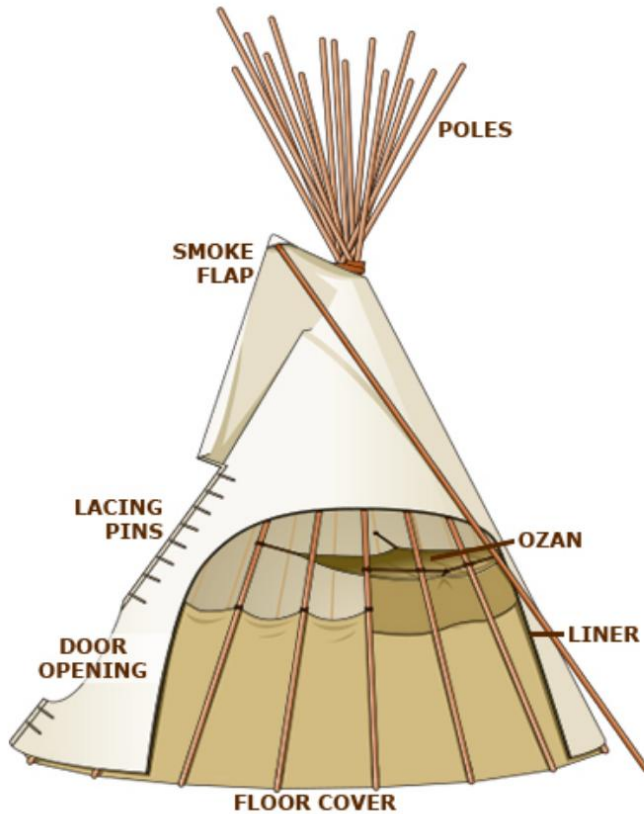
12' Tipi Accessories,
Ropes & Pins :

Oak Stakes (included 

0.00

TOTAL TIPI PRICE :

940.00



Want Your Tipi Painted?

We offer many designs or we can create a custom design just for you.

Learn more [HERE](#)

Tipi Price Calculator

Tipi Package Price Calculator

A Tipi Package consists of a tipi cover with door cover, and the accessories necessary to pitch your tipi (the basics). You must select at least these basic items to get the package pricing. When you purchase these items together you receive a 5% discount on these items and all other items from the package calculator that you add to the basics. If you are interested in individual items, please use the Tipi Component Price Calculator below. NOTE: prices do not include shipping. **Use 27ft heavy duty poles for 24ft tipi to save on shipping overlength poles.*

Tipi Size :

14' Diameter

14' Tipi Cover Fabric :

15 oz Marine Sunforce

690.00

14' Tipi Poles :

Shipped from Colorado

470.00

14' Tipi Liner :

Select Liner

0.00

14' Tipi Ozan :

Select Ozan

0.00

14' Tipi Floor Cover :

Select Floor

0.00

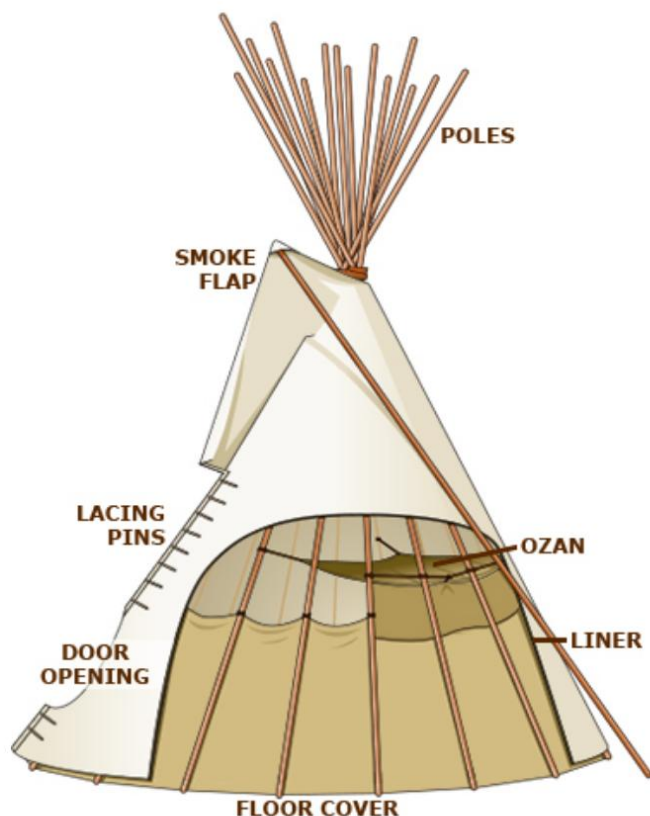
14' Tipi Accessories,
Ropes & Pins :

Select Accessories

0.00

TOTAL TIPI PRICE :

1,160.00



Want Your Tipi Painted?

We offer many designs or we can create a custom design just for you.

Learn more [HERE](#)

Tipi Price Calculator

Tipi Package Price Calculator

A Tipi Package consists of a tipi cover with door cover, and the accessories necessary to pitch your tipi (the basics). You must select at least these basic items to get the package pricing. When you purchase these items together you receive a 5% discount on these items and all other items from the package calculator that you add to the basics. If you are interested in individual items, please use the Tipi Component Price Calculator below. NOTE: prices do not include shipping. **Use 27ft heavy duty poles for 24ft tipi to save on shipping overlength poles.*

Tipi Size :

16' Diameter 

16' Tipi Cover Fabric :

15 oz Marine Sunforce 

820.00

16' Tipi Poles :

Shipped from Colorado 

615.00

16' Tipi Liner :

Select Liner 

0.00

16' Tipi Ozan :

Select Ozan 

0.00

16' Tipi Floor Cover :

Select Floor 

0.00

**16' Tipi Accessories,
Ropes & Pins :**

Select Accessories 

0.00

TOTAL TIPI PRICE :

1,435.00



YURTS **TIPIS** TENTS SAFETY PRODUCTS

970-438-2261  

TIPIS

This design: \$600 for 12 ft tipi



Painted Tipis

Tipi designs originally told the story of the lodge owner. This tool shows our selection of design options. You can mix or match designs from the Tops, Middles, and Bases, or choose full length designs from the Gallery section.

Our artist can also help you with a custom design. Please call 970.438.2261.

Each tipi is hand painted and unique. There will be some variations in color and the positioning of elements. This tool is designed to give you a sense of how your tipi painting will look, but is not an exact representation of the final product.

Tops

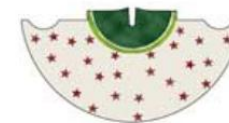
Middles

Bases

Gallery



Two Become
One



Falling Stars



Mountain Raven



TIPIS

This custom design: \$340 for 12 ft tipi



Painted Tipis

Tipi designs originally told the story of the lodge owner. This tool shows our selection of design options. You can mix or match designs from the Tops, Middles, and Bases, or choose full length designs from the Gallery section.

Our artist can also help you with a custom design. Please call 970.438.2261.

Each tipi is hand painted and unique. There will be some variations in color and the positioning of elements. This tool is designed to give you a sense of how your tipi painting will look, but is not an exact representation of the final product.

Tops

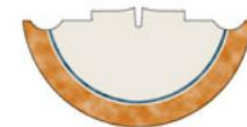
Middles

Bases

Gallery



Mesa



Prairie Path



Three Journeys



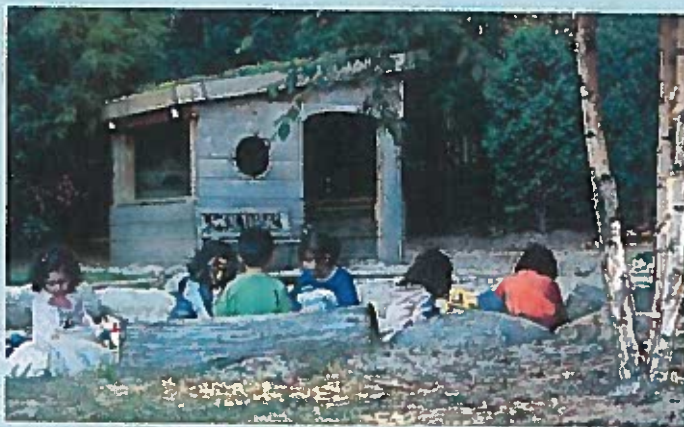




Vertical surfaces outfitted with chutes, wheels, and openings of various sizes help children develop their arms and core muscles as they lift and pour.



Make it deep! If your sandpit is at least 18 inches, preferably 24, children can do the serious digging they crave.



A comfortable sand play area will invite children to linger. It's a place for conversation, relaxing, and hanging out.



Adding water play elements, as here at Constitution Gardens Park outside Washington, DC, increases the appeal of a sandpit in a child's eyes.



When a big, diseased tree needed to come down in this yard, the owners retained the stump as a work surface and repurposed wood rounds to enclose a backyard sandpit.