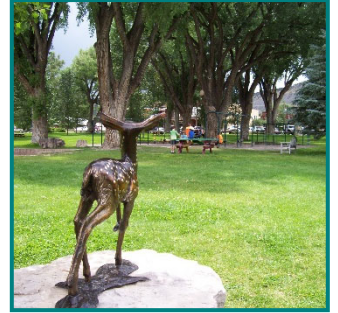

PARKS, TRAILS, AND OPEN SPACE COMMITTEE

JANUARY 14, 2020

6:00 PM

TOWN HALL



Committee Member Meeting Packet

Agenda Item #2:

PARKS, TRAILS, AND OPEN SPACE COMMITTEE
MEETING MINUTES
NOVEMBER 5TH, 2019
6:00 PM
TOWN HALL



Committee Present: Jared Coburn, Doug Canright, Lois Zeimann, Mayor Pro Tem Eric Johnson, Sue Husch, Erin Smith

Town Staff: Chase Jones

I. Call to Order

6:06pm

II. Approval of Meeting Minutes from September 3rd, 2019

Sue moved to approve the minutes

Jared seconded the motion

All committee members present voted in favor

III. Review Upcoming Events in Public Parks

There were no events are on the calendar before the next scheduled meeting in January 2020. While not a Town park event, Noel night will be happening on Dec 6th.

IV. Athletic Park Pavilion Donation Update

The awarded Pavilion designer is Reynolds Ash and Associates who is currently working on conceptual designs. There will be a meeting on November 14th to review these designs. Committee members then shared ideas to promote that the Town is accepting of donations including; KVNF, posters and the chamber. Eric shared that advertising and donation requests are typically something the Town Council asks the stakeholders to do, not staff.

V. Heritage Park Plan Update

Chase informed the Committee that landscaping improvements have been postponed to spring. The Town did not receive appealing bids and the weather window was quickly disappearing. The Committee requested Chase to look into a banner to hang on the site stating "Improvements coming next spring" with Diedra.

VI. Holiday Lights in Hartwell Park

The committee expressed interest in increasing holiday lights from what was installed last year. With Steven Schroeder being full time there may be an opportunity to spend more time on lighting. Working with the fire department to hang lights high could also be explored. Having the lit hoops or "tunnel" installed above the sidewalk between Town Hall and the Post Office as it had been years ago was requested. Chase expressed plowing difficulties and public works concerns but would look into the plausibility to install the tunnel or something similar. Buying a light or laser projector to shine into the Hartwell Cottonwoods was also mentioned.

Erin shared that American Lighting can be a good source for wholesale lighting options.

VII. New Business

Jared shared that the Community garden is considering installing a composting toilet and asked if the Town has plans to improve Green Street Park in the near future. Eric responded that improvements are on the Council's 5-year CIP plan. Chase suggested that the group discuss the toilet with Town staff, specifically the building inspector, to ensure their proposal is allowable by code before it is presented to the Parks Committee or Town Council.

VIII. Old Business

Public Works is working on trails in Cottonwood Park. Chase will share cloth and material used in next meeting.

Chase shared that the staff member who was working on committee structures left so that project will be delayed.

Hazard Trees have been removed in Cottonwood Park and a Hartwell Park cottonwood tree is planned.

IX. Adjourn

6: 45pm

Agenda Item #3:

Agenda Item #4:

Chase Jones

From: Kurt Jacobsen <kurt.jacobsen61@gmail.com>
Sent: Monday, January 6, 2020 12:32 PM
To: Chase Jones; Christine Lance; Ridgway Inspector (Mike Gill)
Cc: Agnieszka Przeszlowska; Ames Jacobsen; Aimee Quardri
Subject: RE: RE: RCG info on composting toilet

Hi Chase,

We would appreciate the opportunity to have a quick meeting with you and Mike to discuss the possibility of partnering with the town of Ridgway to install a composting toilet at the Green Street Park / Community Garden site. Chris Lance and myself have reviewed or schedules and it looks like the only window of opportunity for us is for Thursday of this week (1/9/20) any time after 11:30 AM until end of day. Please let us know if that will work for you both. Maybe 1:00 PM ? Regards, Kurt.

Sent from [Mail](#) for Windows 10

From: [Chase Jones](#)
Sent: Monday, January 6, 2020 9:32 AM
To: [Christine Lance](#); [Ridgway Inspector \(Mike Gill\)](#)
Cc: [Kurt Jacobsen](#); [Agnieszka Przeszlowska](#); [Ames Jacobsen](#); [Aimee Quardri](#)
Subject: RE: RCG info on composting toilet

Morning Chris,

Thank you for the information below, I'll include it in the meeting packet. The Parks Committee meeting is next Tuesday January 14th at 6pm. I will email you a copy of the agenda when it is finalized at the end of the week.

I have also mentioned to RCG that a quick meeting with myself and Mike Gill, the Town's building inspector, ahead of this meeting would be a good idea. I would like to connect your vision with Mike to be sure what you're proposing to the Parks Committee and ultimately the Town Council is allowable by Town code. Not only the toilet but what would be required for the enclosure. This will also help your request by being able to say you've discussed feasibility with staff beforehand. Please let me know your availability for this.

Best,
Chase

From: Christine Lance <chrissylance@gmail.com>
Sent: Saturday, January 4, 2020 11:01 AM
To: Chase Jones <cjones@town.ridgway.co.us>
Cc: Kurt Jacobsen <kurt.jacobsen61@gmail.com>; Agnieszka Przeszlowska <agnesp@gmail.com>; Ames Jacobsen <amesjacobsen@gmail.com>; Aimee Quardri <asquadri75@hotmail.com>
Subject: RCG info on composting toilet

Hello Chase, Chris here from the RCG. As our 6 PM meeting on January 14 approaches, I wanted to get you some reading materials on the proposed composting toilet to you and the parks committee. This information comes to us via Leif Jewel and Jill Markey of Alternative Power Enterprises here in Ridgway. The unit that you can read about below is a complete unit, meaning that it requires no external plumbing or electricity. It does however require an air venting stack, and of course a building enclosure. Please let me know if you have any more questions ahead of our meeting date on the 14th. And please confirm with me that that meeting time has been moved to 6 PM.

Chris Lance 970-729-1738

I have CCed the rest of our steering committee on this email.

Hi Chris,

Here's the link to SunMar composting toilets.

We are a dealer and should be able to get you a good price.

https://sun-mar.com/brochures/Composting%20Toilet%20Brochure_English.pdf

The Excel NE would be the one to get.

The Excel NE retails for \$1,695 plus freight and tax.

Let me know if you have any further questions.

Take care

--

Leif Juell



Alternative Power Enterprises, Inc.

672 North Cora St.

PO Box 351

Ridgway, CO

NABCEP Certified Installer # 091308-10

www.alternative-power.com

970-626-9842



Sun-Mar

Composting Toilets

- No Septic
- No Plumbing



Sun-Mar Composting Toilets



Protecting the environment for over 25 years

**At Sun-Mar, we are proud of our history
and the role our products play in protecting the environment.**

- Sun-Mar toilets are the safest and most environmentally friendly method of waste treatment
- Sun-Mar composting toilets evaporate liquids and compost the solids, so on most models there is absolutely no output and no contamination of ground water
- Sun-Mar composting toilets have saved over 3.3 billion gallons of water, and counting!



WHAT IS COMPOSTING?

- Composting converts organic matter back to its essential minerals
- Aerobic microbes do this in the presence of moisture and air, by converting carbon to carbon dioxide gas, and hydrogen to water vapor
- As a result, some 95% of the starting material is evaporated
- The resulting compost is recycled back to nature



Sun-Mar units have no equal!

Sun-Mar is a world leader in composting toilet technology.

- Our unique, patented Bio-drum™ design means fast, odor-free composting
- Sun-Mar toilets are the only ones certified by NSF to NSF/ANSI Standard #41 for residential and cottage use (most regulators require NSF certification)
- Sun-Mar toilets are designed so that air is constantly being drawn in and up the vent stack providing odor-free operation
- Sun-Mar toilets are sold by a global network of thousands of dealers
- Sun-Mar's unique 3 chamber technology means easy operation and maintenance



Why use a Sun-Mar composting toilet?

General Benefits

- No Plumbing
- No Water
- Odor-Free
- Inexpensive Solution



Environmental Benefits

- No Pollution
- Saves Water
- Recycles Nutrients
- Little or No Liquid Output



Sun-Mar Toilets are easily installed anywhere!

They are an ideal solution:

- Where it is not possible or cost-effective to install a conventional toilet
- As an environmentally friendly alternative

Sun-Mar toilets are used in:

- Homes, cottages, garages, warehouses, barns, pool cabanas, cabins, bunkies, mines, eco resorts, RV's, boats, farms, camps and many other locations



WARRANTY

All units carry a full 5 year replacement warranty on the fibreglass tank and a comprehensive 3 year replacement warranty on all other parts



There is only one performance standard for composting toilets in North America. This is National Sanitation Foundation (*) NSF/ANSI Standard #41, 2011.

Sun-Mar is certified by NSF under this stringent standard. Testing is conducted for 6 months at a NSF recognized independent testing laboratory under a strict test protocol. To be certified the unit must operate odor-free at maximum capacity (including overload conditions) and produce clean, safe compost.

As additional verification, NSF obtains and tests additional compost samples from randomly selected units in regular field operation, and conducts interviews with the users of these units. For verification check NSF website.



Electrical features are
CSA APPROVED LR 55925-2



AUST STANDARD AS/NZS 1546.2
Lic #20630 SAI GLOBAL



Certified to comply with applicable European Product Safety
Standards and satisfies the provision for CE marking

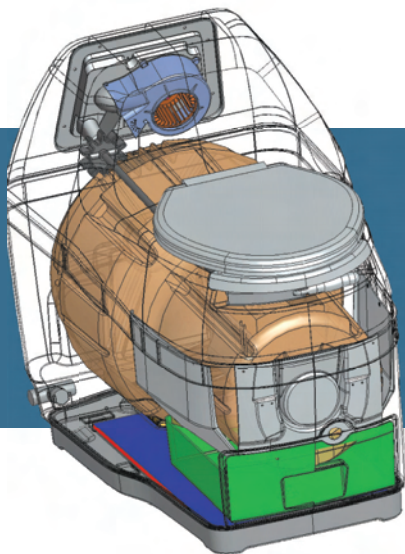


United States Coast Guard Certified

Operating a Sun-Mar

Operating a Sun-Mar toilet is simple. Everything you need to get started is included with the unit.

To operate the toilet simply add Sun-Mar's bulking material and rotate the patented Bio-drum™. Removing compost is quick and easy and is usually only done a few times per year with regular use.



Three Chamber Technology

Composting toilets compost waste, evaporate liquid, and provide safe and finished compost. Not surprisingly, the conditions needed for each task are different.

This is why Sun-Mar toilets incorporate a three chamber system that optimizes ideal conditions in each chamber.



SUN-MAR toilets compost all regular toilet paper

1. The Sun-Mar Bio-drum™ unique advantages

Sun-Mar's Bio-drum™ has obvious advantages that offer the ideal environment for composting.

- Tumbling the Bio-drum™ optimizes mixing and aeration and allows for moisture and oxygen to be evenly distributed throughout the compost
- The Bio-drum™ ensures there is no excess moisture by removing it automatically and sending it into the evaporating chamber
- The Bio-drum™ is separated from direct heat in the evaporation chamber so the compost is kept moist thereby accelerating decomposition
- The Bio-drum™ offers unmatched simplicity of operation. To mix and aerate merely turn the Bio-drum™ handle periodically
- By providing perfect mixing, oxygenation and moisture control, the Bio-drum™ offers an ideal environment for aerobic bacteria to flourish and quickly break down organic material





2. The Advantages of the Sun-Mar automatic evaporating system

The Sun-Mar evaporation chamber has a large evaporating surface with thermostatically controlled heat, lots of air movement which offers the ideal environment for evaporation.



- The floor of the unit below the drawer incorporates the evaporating chamber
- Electric units have a thermostatically controlled heater in a sealed compartment below the evaporating chamber
- On electric units a fan draws air into the unit to ensure odor-free operation, and to optimize evaporation
- The fan can be adjusted to optimize the mix between re-circulated and vented air for every installation
- Non-electric units rely on the vent stack to provide some evaporation from natural drafting
- Evaporation and air movement on non-electric units can be enhanced by installing a 12 Volt fan in the vent stack

3. The Advantages of the unique Sun-Mar finishing drawer

The Sun-Mar finishing drawer is an isolated chamber, into which finished compost drops automatically when the Bio-drum™ is rotated in reverse. Here the compost can be left to complete the composting and sanitation process, isolated from exposure to new waste.

- While in the drawer the compost is surrounded by a stream of drying air and gradually dries prior to removal
- Once complete the sanitized compost is quickly and easily removed by sliding out the finishing drawer





Which Model is Right for Me?

3 easy steps to determine the right model for you:

1. Self-Contained or Central units?

Self-contained Units

These units are installed directly in the bathroom.

Main Features

- Quick and easy to install
- Waterless – no plumbing required
- Electrical units can evaporate all liquids under normal conditions
- Easy to clean having a durable shiny contoured finish



Central Units

These units have a conventional looking toilet in the bathroom and a separate composting unit.

They are available in two styles - low water flush and A/F waterless.

Low water style systems

- Feature a conventional looking toilet in the bathroom
- Can be connected to multiple bathrooms



Waterless style systems (A/F kit required)

- Feature a conventional looking toilet in the bathroom
- No plumbing necessary





2. Electric or Non-Electric?

Electric Toilets

Select these if you have a standard electricity supply. These units feature high quality fans and thermostatically controlled heaters.

Non-Electric Toilets

Select these if you have no power or are using alternative energy. These toilets feature a higher capacity ventilation stack.

Dual Voltage

Select the AC/DC Kit if you require the option of operating in a standard electric mode (115 Volt) or with only a 12 Volt 1.4 fan or with no power at all.

3. Capacity and Color

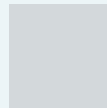
Capacity

Select a toilet based on the right capacity for your needs. Although advertised capacities can be doubled for short periods, Sun-Mar recommends selecting a toilet with the maximum number of users in mind.



Color

Choice of white or bone to match your bathroom fixtures



White











Bone






Sun-Mar's self-contained toilets are quickly and easily installed anywhere a toilet is desired. All toilets are manufactured to the highest standards using advanced materials. The durable smooth contoured finish makes these toilets attractive and

easy to clean. All units feature Sun-Mar's patented Bio-drum™ and unique three chamber technology that provides ideal composting conditions. All self-contained toilets are waterless, require no plumbing and provide odor-free operation.

Self-Contained Units	Model	Description	COMPOSTING CAPACITY		Voltage	Color
			Residential/ Continuous	Weekend/ Vacation		
	Excel 	High Capacity Electric Unit	3 Adults or Family of 5	6 Adults or Family of 8	115V or 230V or AC/DC option*	White or Bone
• Features a detachable footrest						
	Excel NE 	High Capacity Non-Electric Unit	2 Adults or Family of 3	5 Adults or Family of 7	-	White or Bone
• Features a detachable footrest						
	Compact 	Medium Capacity Electric Unit	1 Adult	3 Adults or Family of 4	115V or 230V	White or Bone
	SpaceSaver 	Medium Capacity Electric Unit	1 Adult	3 Adults or Family of 4	115V	White
• Features a detachable footrest						

*Kit required

	Mobile	Medium	1 Adult	3 Adults or	115V	Bone
	 	Capacity		Family of 4	or 12V	
		Electric Unit				

Sun-Mar Mobile is designed for use on boats and RVs. It eliminates the need for pump outs. The Mobile is engineered to accommodate motion with mounting brackets, a sealed finishing drawer and fold up footrest.

The Mobile includes an air filtration kit for odor-free deck level venting on boats.



Sun-Mar central systems are ideal for those who want to have a conventional looking toilet in the bathroom with the central unit separate. Sun-Mar has three series of central units; the regular capacity CENTREX 1000, the high capacity CENTREX 2000, and the ultra high capacity CENTREX 3000.

For typical seasonal use, compost is extracted annually. CENTREX 3000 units also incorporate Sun-Mar's unique Autoflow® technology that causes compost to move automatically through the Bio-drum™ and drop into a separate collection chamber.

Central units may be operated in low water or A/F waterless mode.







Low water style systems

- Feature a conventional looking porcelain toilet in the bathroom
- Can be connected to multiple toilets up to 15 feet from the CENTREX unit
- For use with model 510 and/or 511 ultra low flush toilets (ordered separately)

Waterless style for CENTREX 2000 and CENTREX 3000 systems (A/F waterless kit required)

- Feature a conventional looking toilet in the bathroom positioned above the CENTREX unit
- No plumbing necessary
- For use with Sun-Mar dry toilet (ordered separately)

For optimal operation of all CENTREX units use Compost Sure Blue for low water style systems or Compost Sure Green for waterless systems.

Central Units	Model	Description	COMPOSTING CAPACITY		Voltage	Water
			Residential/ Continuous	Weekend/ Vacation		
	CENTREX 1000 Series 	Regular Capacity Electric Unit	-	5 Adults or Family of 7	115V or 230V or Non-Electric or AC/DC option*	Ultra Low Water Flush
• Capacity reduced by 1 person for non electric model						
	CENTREX 2000 Series 	High Capacity Electric Unit	4 Adults or Family of 6	7 Adults or Family of 9	115V or 230V or Non-Electric or AC/DC option*	Ultra Low Water Flush, or A/F Waterless Option†
• Capacity reduced by 1 person for non electric model						
	CENTREX 3000 Series 	High Capacity Electric Unit	6 Adults or Family of 8	9 Adults or Family of 11	115V or 230V or Non-Electric or AC/DC option*	Ultra Low Water Flush, or A/F Waterless Option†
• Capacity reduced by 1 person for non electric model • Incorporates Autoflow® technology (automatic discharge of compost to a separate collection chamber)						
†Contact Sun-Mar for A/F capacity ratings *Kit required						



CENTREX System Toilet Options

Ultra Low Flush Toilets (Model 510)

Using roughly one pint of water per flush, these porcelain ultra low flush toilets provide all the aesthetics of a conventional toilet while minimizing water usage. Available in white or bone colors and having a regular sized seat, several toilets can be installed to a single CENTREX unit. Where additional height is required for the toilet to gravity feed to the composting unit, a low profile Model 511 is offered.



Available in:



White



Bone

CENTREX A/F Waterless Toilet

The A/F waterless toilet offers features similar to a conventional toilet. Available in regular size (white or bone) and elongated size (white only, ADA* compliant). This toilet is used with CENTREX 2000 or CENTREX 3000 units configured for waterless use. CENTREX A/F toilets are connected directly above a CENTREX unit.



Available in:



White



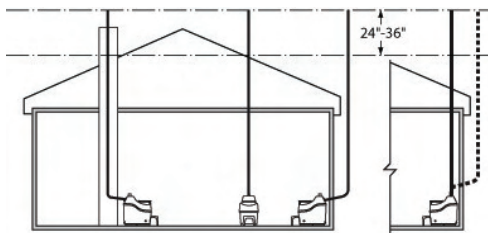
Bone

* Americans with Disabilities Act

Sun-Mar units are designed for easy installation

All Units Include:

- Vent kit
- Starting accessories including Compost Sure bulking agent
- Compost Quick enzyme for cleaning and accelerating composting and Microbe Mix bacteria
- Owner operating and care manual
- Warranty card



Installing the vent stack

All composting units require a vent stack. For details on possible vent configurations, see sample configurations illustrated at left.

Sun-Mar recommends an optional 12V fan for non electric units used in a residential setting or installed with one or more 45° angles or is in areas subject to downdraft.



Electrical installation

Electric units are fitted with a standard 115 Volt plug (230V for international). Power is supplied to the fan and heating element.

Evaporation

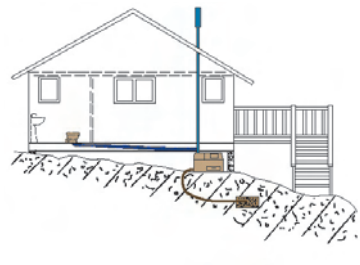
- Sun-Mar units have been engineered to automatically evaporate liquids without drying out the compost
- Sun-Mar's advanced evaporation process uses little or no power
- Electric units incorporate a fan featuring adjustable re-circulation and stainless steel shaft for extended life

Handling excess liquid

Self-contained electric units (Except Mobile & Spacesaver) and CENTREX electric waterless units will evaporate all liquids under normal operation. As a precautionary measure Sun-Mar recommends that the drains on all toilets be connected.

Collect and/or treat excess liquid in an approved facility such as a recycling bed, old septic system, holding tank or drain pit.

All installations should conform to local regulations.



For more details and recommendations on recycling beds please visit our website.

Winter Use

For extended winter use the composting unit has to be kept above 13° Celsius or 55° Fahrenheit.

Limited Winter Use

For limited use in cold temperatures you can use the unit as a holding tank as long as there is enough space in the patented Bio-drum™.





Specifications

SELF-CONTAINED UNITS	Excel	Excel NE	Compact	Space Saver	Mobile
Average Power use in watts (heater on 1/2 time)	150	N/A	125	110	80
UNIT DIMENSIONS (INCHES)					
Height	33¼	31½	28½	30	30
Depth	33	31½	33	23	23
Width	22½	22½	21½	19½	19½
VENT & DRAINS					
Vent Pipe (2" cent. vac. tubing; 3" & 4" sewer)	2"	4"	2"	2"	3"
Drains (required or optional hook-up)	1" O.D. opt.	1" req.	¾" O.D. opt.	1" req.	1" req.
WEIGHT (LBS)					
Product Weight-Shipping Weight	60-85	47-81	48-72	43-68	44-72
SHIPPING CARTON DIMENSIONS (INCHES)					
Width	28	28	28	23	23
Length	36	36	36	30	30
Height	36	36	32	38	38
ROUGH-IN MEASUREMENTS (INCHES)					
Depth required to remove drawer (Unit plus drawer)	46	46	45	38	38





CENTRAL UNITS

	1000	1000 NE	2000	2000 NE	3000	3000 NE
Average Power use in watts (heater on ½ time)	150	N/A	200	N/A	200	N/A

UNIT DIMENSIONS (INCHES)

Height	28½	27½	28	26½	30¼	29¼
Depth	32½	32½	27	26½	27½	27½
Unit Width, and Width required to turn handle	22½ x 24½	22½ x 24½	45½ x 49	45½ x 49	71	71

VENT & DRAINS

Vent Pipe (2" cent. vac. tubing; 3" & 4" sewer)	2"	4"	2"	4"	2"	4"
1" Drains (required or optional hook-up)	Req.	Req.	Req.	Req.	Req.	Req.

WEIGHT (LBS)

Product Weight - Shipping Weight	57-80	42-78	74-112	63-109	110-144	95-135
----------------------------------	-------	-------	--------	--------	---------	--------

SHIPPING CARTON DIMENSIONS (INCHES)

Width	28	27	29	29	30	30
Length	36	36	46	46	62	62
Height	32	36	35	35	34	34

ROUGH-IN MEASUREMENTS (INCHES)

Depth required to remove drawer (unit plus drawer)	46¼	46¼	45	45	45½	45½
--	-----	-----	----	----	-----	-----

Option Kits

A/F Waterless Kit

Kit required for use with Sun-Mar waterless toilets and CENTREX 2000 and CENTREX 3000 systems. Includes a 12V fan and hardware kit.

AC/DC Kit

This kit allows an electric unit to be converted to operate in a 12 volt or non-electric mode. When converted the unit will have both a 2 inch and 4 inch vent stack. This kit can only be used with the EXCEL, CENTREX 1000, CENTREX 2000 and CENTREX 3000.



Sun-Mar Composting Accessories

Sun-Mar accessories optimize toilet performance



Compost Sure Green

The ideal bulking agent for your Sun-Mar waterless toilet. Compost Sure Green is specially formulated to keep compost enriched with organic carbon, moist and maintain porosity ensuring maximum aeration.

Compost Sure Blue

For use with all Sun-Mar low water CENTREX systems. Compost Sure Blue's mix enriches compost with organic carbon and also provides drainage of excess liquid ensuring compost remains aerobic and odor-free.



Microbe Mix

100% natural product combining a blend of microbes and enzymes designed to start and accelerate composting in all Sun-Mar toilets.

Compost Quick

Cleans and accelerates the composting action of your Sun-Mar composting toilet. Compost Quick is a specially selected natural enzyme solution that also assists aerobic decomposition of waste. Compost Quick is 100% natural and non toxic.





Finally, Composting made easy!

Sun-Mar's range of garden composters incorporate a patented, double drum, Autoflow® design, allowing for continuous use; now there is no waiting for batches to finish.

Unique Autoflow® features:

- Continuous composting
- No waiting for batches to finish
- Pest Resistant
- Loads and turns easily
- Compost exits automatically



For more information on Sun-Mar garden composters
visit www.gardencomposter.com





Sun-Mar

Global Composting Experts

Canada: 5370 South Service Road, Burlington, ON L7L 5L1
USA: 600 Main Street, Tonawanda, NY 14150-0888

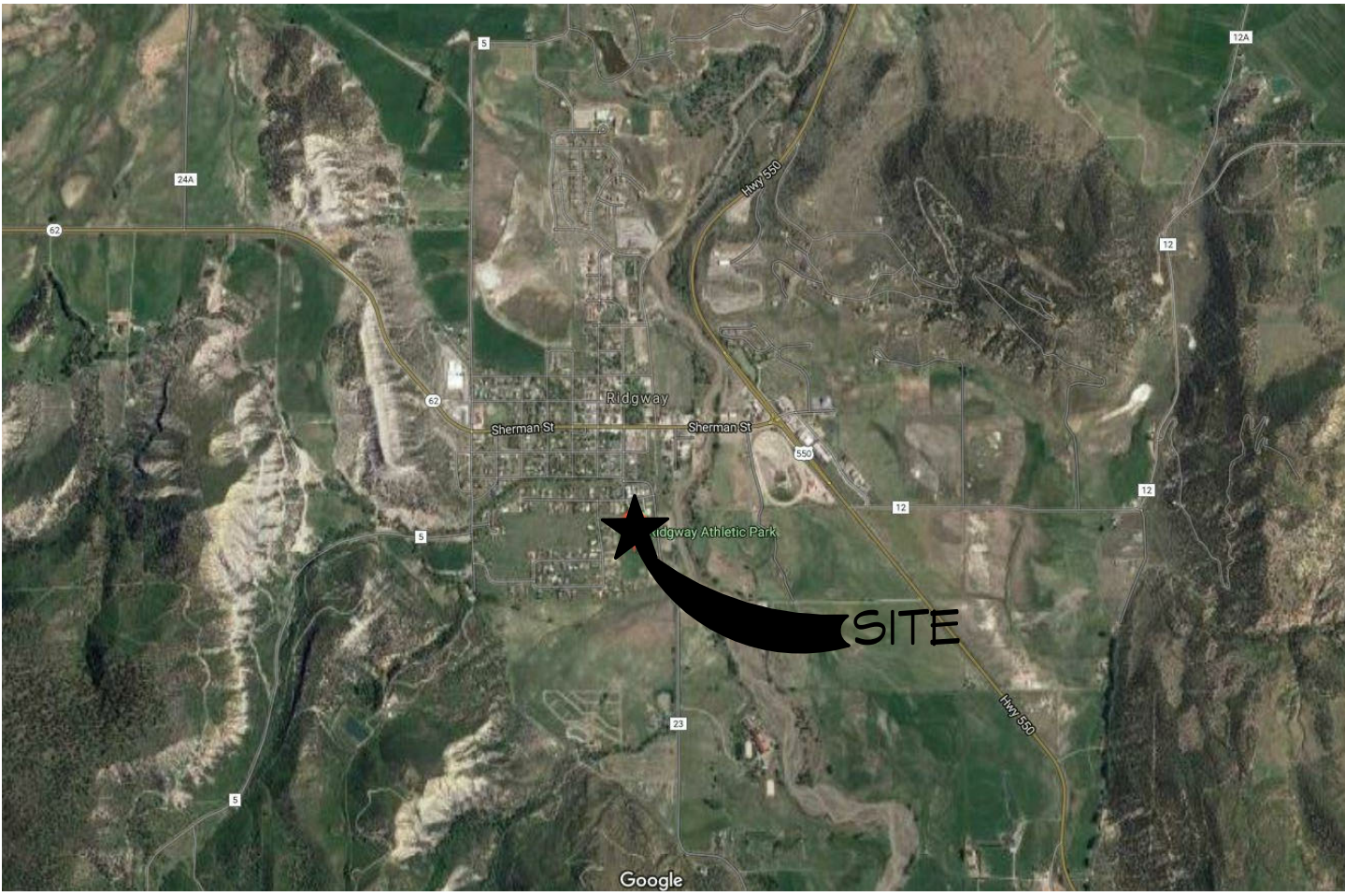
Tel: 905-332-1314 • 1-888-341-0782 • Fax: 905-332-1315
Email: compost@sun-mar.com

www.sun-mar.com

Distributed by:

Agenda Item #5:

SITE VICINITY MAP



PROJECT DATA

GROSS FLOOR AREAS	
CONCESSION	128 SF
EQUIPMENT STORAGE	538 SF
TOTAL	660 SF
UNCONDITIONED DECK SPACE	2,211 SF
OCCUPANCY GROUP:	S-2
CONSTRUCTION TYPE:	V-B

RIDGWAY ATHLETIC PAVILION

594C SABETA DRIVE
RIDGWAY, CO 81432



REYNOLDS ASH
+ ASSOCIATES

ARCHITECTURE
ENGINEERING

1140 MAIN AVE, STE. B
DURANGO, CO 81301
(970) 259-7494
FAX (970) 259-7492

262 PAGOSA STREET, STE. 200
P.O. BOX 96
PAGOSA SPRINGS, CO 81447
(970) 264-6884

RA-AE.COM

REYNOLDS ASH + ASSOCIATES, P.C.
EXPRESSLY RESERVES THE COMMON LAW COPYRIGHT
AND OTHER PROPERTY RIGHTS IN THESE PLANS. THESE
PLANS ARE NOT TO BE CHANGED OR COPIED IN ANY
FORM OR MANNER WHATSOEVER NOR ARE THEY TO BE
ASSIGNED TO ANY THIRD PARTY WITHOUT FIRST
OBTAINING WRITTEN PERMISSION AND CONSENT OF
THE ARCHITECT OF RECORD.

THE USE OF THESE PLANS AND SPECIFICATIONS SHALL
BE RESTRICTED TO THE ORIGINAL SITE FOR WHICH
THEY WERE PREPARED AND PUBLICATION THEREOF IS
EXPRESSLY LIMITED TO SUCH USE. FEDERAL LAW
PROHIBITS THE REPRODUCTION, DISPLAY, SALE OR
OTHER DISPOSITION OF THIS DOCUMENT WITHOUT THE
EXPRESS WRITTEN CONSENT OF
RA+AE ARCHITECTS, P.C.

ABBREVIATIONS

A.B.	ANCHOR BOLT	I.D.	INSIDE DIAMETER
ACT	ACOUSTICAL CEILING TILE	INSUL.	INSULATION
A.F.F.	ABOVE FINISHED FLOOR	INT.	INTERIOR
AGGR.	AGGREGATE	JAN.	JANITOR
AL.	ALUMINUM	JNT.	JOINT
ALT.	ALTERNATE	JST.	JOIST
APPROX.	APPROXIMATE	KIT.	KITCHEN
ARCH.	ARCHITECTURAL	LAB.	LABORATORY
BD.	BOARD	LAM.	LAMINATE
B.L.D.S.	BUILDING	LAV.	LAVATORY
BLK.	BLOCK	LT.	LIGHT
BLK'S.	BLOCKING	MAX.	MAXIMUM
BM.	BEAM	MECH.	MECHANICAL
BOT.	BOTTOM	MEMB.	MEMBRANE
BTWN.	BETWEEN	MFR.	MANUFACTURER
BUR.	BUILT UP ROOFING	M.H.	MANHOLE
B.V.	BOTH WAYS	MIN.	MINIMUM
C.J.	CONTROL JT.	MISC.	MISCELLANEOUS
CLG.	CEILING	M.O.	MASONRY OPENING
CLKG.	CAULKING	MTL.	METAL
CLR.	CLEAR	MUL.	MULLION
C.M.U.	CONCRETE MASONRY UNIT	N	NORTH
COL.	COLUMN	N.I.C.	NOT IN CONTRACT
CONN.	CONNECTION	NO.	NUMBER
CONSTR.	CONSTRUCTION	NOM.	NOMINAL
CONT.	CONTINUOUS	N.T.S.	NOT TO SCALE
C.T.	CERAMIC TILE		
C.O.A.	CENTER OF ARCH		
DEG.	DEGREE	O.C.	ON CENTER
DET./DTL.	DETAIL	O.D.	OUTSIDE DIAMETER
D.F.	DRINKING FOUNTAIN	OH.	OVERHEAD
DIAG.	DIAGONAL	OPG.	OPENING
DIA. Ø	DIAMETER	OPP.	OPPOSITE
DN.	DOWN	P.C.T.	PRE-CAST
DS.	DOWNSPOUT	P.L.	PROPERTY LINE
DWG.	DRAWING	P.LAM.	PLASTIC LAMINATE
E	EAST	PLAS.	PLASTER
(E)	EXISTING	PLYND.	PLYWOOD
EA.	EACH	FR.	FAIR
E.J.	EXPANSION JOINT	Q.T.	QUARRY TILE
E.I.F.S.	EXTERIOR INSULATION AND FINISH SYSTEM		
EL./ELEV.	ELEVATION	R.	RISER
ELEC.	ELECTRICAL	R.D.	ROOF DRAIN
ELEV.	ELEVATION	RE.	REFER TO ...
EMER.	EMERGENCY	REFR.	REFRIGERATOR
ENCL.	ENCLOSURE	REINF.	REINFORCED
EQ.	EQUAL	REQ'D.	REQUIRED
EQUIP.	EQUIPMENT	RM	ROOM
E.V.	EACH WAY	R.O.	ROUGH OPENING
E.W.C.	ELECTRIC WATER COOLER		
EXP.	EXPANSION	S	SOUTH
EXT.	EXTERIOR	S.C.	SOLID CORE
F.A.	FIRE ALARM	S.CHD.	SCHEDULE
F.D.	FLOOR DRAIN	SECT.	SECTION
F.D.C.	FIRE DEPARTMENT CONNECTION	S.F.	SQUARE FOOT
F.DN.	FOUNDATION	SHT.	SHEET
F.E.	FIRE EXTINGUISHER	SH.	SIMILAR
F.E.C.	FIRE EXTINGUISHER CABINET	S.P.	SPRING POINT
F.F.	FINISH FLOOR	SPEC.	SPECIFICATION
F.H.C.	FIRE HOSE CABINET	SQ. OR	SQUARE
FIN.	FINISH	S.S.	SEE STRUCTURAL DRAWINGS
F.L.	FLOW LINE	S.S.D.	STAGGERED
FLR.	FLOOR	STD.	STANDARD
FLUOR.	FLUORESCENT	STIFF	STIFFENER
FND.	FOUNDATION	STEEL	STEEL
F.O.B.	FACE OF BRICK	STRUC.	STRUCTURAL
F.O.C.	FACE OF CONCRETE	SUSP.	SUSPENDED
F.S.	FULL SIZE		
FT.	FOOT OR FEET	TR	TREAD
FTG.	FOOTING	T & B	TOP AND BOTTOM
FURR.	FURRING	TER.	TERRAZZO
		TONGUE & GROOVE	TONGUE & GROOVE
GA.	GAUGE	THK.	THICK
GALV.	GALVANIZED	T.O.	TOP OF
G.C.	GENERAL CONTRACTOR	T.S.	TUBE STEEL
G.L.	GLASS	TYP.	TYPICAL
GR.	GRADE		
GYP.	GYPSON	U.N.O.	UNLESS NOTED OTHERWISE
GYP. BD.	GYPSON BOARD		
H.B.	HOSE BIBB	V.C.T.	VINYL COMPOSITION TILE
H.C.	HOLLOW CORE	VER.	VERIFY
H/C	HANDICAPPED	VERT.	VERTICAL
HDWD.	HARDWOOD		
HDNE.	HARDWARE	W	WEST
H.M.	HOLLOW METAL	W/	WITH
HORIZ.	HORIZONTAL	W.C.	WATER CLOSET
HR.	HOUR	WD.	WOOD
HT.	HEIGHT	W/O	WITHOUT
HVAC	HEATING, VENTILATION AND AIR CONDITIONING	℄	CENTERLINE

NOTE: Clarify with Architect any abbreviations not listed.
Some abbreviations on list may not be used in project.

PROJECT DIRECTORY

DEVELOPER: TAP RIVER, LLC 7954 FALLS CREEK MAIN DURANGO, CO 81301 CONTACT: ED KILEEN	CIVIL ENGINEER: ROADRUNNER 1315 MAIN AVE. DURANGO, CO 81301 (970) 247-1717
ARCHITECT: REYNOLDS ASH + ASSOCIATES TRACY REYNOLDS 1140 MAIN AVENUE, SUITE B DURANGO, CO 81301 (970) 259-9474	MEP ENGINEER: BIGHORN CONSULTING ENGINEERS, LLC MARK HARRINGTON 386 INDIAN ROAD GRAND JUNCTION, CO 81505 (970) 241-9514
STRUCTURAL ENGINEER: WILSON STRUCTURAL ENGINEERS 48 G.R. 250 DURANGO, CO 81301 (970) 395-6714	LANDSCAPE ARCHITECT: DHM DESIGN 1304 E. 3RD AVE., ROOM 23 DURANGO, CO 81301 (970) 395-4219

ARCHITECTURAL SYMBOLS

	SECTION: SECTION NUMBER SHEET NUMBER		EXTERIOR ELEVATION: SHEET NUMBER ELEVATION NUMBER
	DETAIL: DETAIL NUMBER SHEET NUMBER		INTERIOR ELEVATION: SHEET NUMBER ELEVATION NUMBER
	DOOR DESIGNATION		ROOF SLOPE INDICATION
	WINDOW DESIGNATION		ELEVATION TAG
	COLUMN GRID		NORTH ARROW
	COLUMN LINE		
	CENTER LINE		
	DIMENSION LINE TO WALL OR OTHER OBJECT.		

MATERIALS LEGEND

	- EARTH		- WOOD BLOCKING
	- RIGID INSULATION		- PLYWOOD/SHEATHING
	- CONCRETE		- GYPSUM BOARD

GENERAL NOTES:

- I. APPLICABLE CODES:**
2015 INTERNATIONAL BUILDING CODE
2015 INTERNATIONAL MECHANICAL CODE
2018 INTERNATIONAL PLUMBING CODE
2017 NATIONAL ELECTRIC CODE
2015 INTERNATIONAL FIRE CODE
2015 INTERNATIONAL ENERGY CONSERVATION CODE
- II. GENERAL/CONTRACT REQUIREMENTS:**
A. SUBCONTRACTOR SHALL VERIFY ALL DIMENSIONS AND CONDITIONS SHOWN ON DRAWINGS AT THE JOB SITE AND SHALL NOTIFY KOGAN BUILDERS, INC OF ANY DISCREPANCIES, OMISSIONS, AND/OR CONFLICTS BEFORE PROCEEDING WITH THE JOB.
B. ANY CHANGE WHICH RESULTS IN EXTRA COST SHALL NOT PROCEED WITHOUT WRITTEN AUTHORIZATION BY THE OWNER.
C. SUBCONTRACTOR MUST COMPLY WITH ALL RULES AND REGULATIONS OF AGENCIES HAVING JURISDICTION AND SHALL CONFORM TO ALL CITY, COUNTY, STATE AND FEDERAL CONSTRUCTION, SAFETY, AND SANITARY LAWS, CODES, STATUTES AND ORDINANCES.
D. ALL WORK SHALL BE PERFORMED BY SKILLED AND QUALIFIED WORKMEN IN ACCORDANCE WITH THE BEST PRACTICES OF THE TRADES INVOLVED. EACH TRADE WILL PROCEED IN A FASHION THAT WILL NOT DELAY THE TRADES WORKING SIMULTANEOUSLY OR FOLLOWING THEM.
E. ALL WORK AND MATERIALS SHALL BE GUARANTEED AGAINST DEFECTS FOR A PERIOD OF AT LEAST ONE (1) YEAR FROM APPROVAL FOR FINAL PAYMENT.
- III. PROJECT LAYOUT REQUIREMENTS:**
A. DO NOT SCALE DRAWINGS - DIMENSIONS GOVERN. LARGER SCALE DRAWINGS SHALL GOVERN SMALLER SCALE DRAWINGS.
B. DIMENSIONING IS AS FOLLOWS, UNLESS OTHERWISE NOTED:
CENTERLINE OF COLUMNS
FACE OF CONCRETE
FACE OF MASONRY
EXTERIOR FACE OF STUD AT EXTERIOR WALLS
FACE OF STUD AT INTERIOR STUD WALLS
CENTER OF WINDOW AND DOOR OPENINGS
C. ALL FINISH FLOOR ELEVATIONS ARE TO TOP OF SLAB OR TOP OF SHEATHING, U.N.O.
D. ALL STEPS SHALL HAVE 7" MAXIMUM RISERS AND 11" MINIMUM TREADS U.N.O OR SPECIFIED DIFFERENTLY ON THE DRAWINGS.
E. ALL INTERIOR FEATURES SHOWN ARE CONCEPTUAL. VERIFY SHAPE, HEIGHT, AND DISTANCE OFF FINISH FLOOR WITH OWNER AND ARCHITECT AT CONSTRUCTION PHASE.
F. ALL DIMENTIONS ARE NOMINAL
- IV. LIFE SAFETY REQUIREMENTS:**
A. SAFETY GLAZING SHALL BE PROVIDED IN THE FOLLOWING LOCATIONS:
GLAZING IN SLIDING DOORS
GLAZING IN FIXED AND SLIDING PANELS OF SLIDING DOORS
GLAZING IN DOORS AND ENCLOSURES FOR SHOWERS, BATHTUBS, HOT TUBS, WIRLPOOLS, ETC.
GLAZING IN INDIVIDUAL FIXED OR OPERABLE PANELS ADJACENT TO A DOOR WHERE THE NEAREST EXPOSED EDGE OF THE GLAZING IS WITHIN A 24 INCH ARC OF EITHER VERTICAL EDGE OF A DOOR IN A CLOSED POSITION AND WHERE THE BOTTOM EXPOSED EDGE OF THE GLAZING IS LESS THAN 60 INCHES ABOVE THE WALKING SURFACE.
GLAZING MEETING ALL OF THE FOLLOWING:
1. EXPOSED AREA, 9 S.F.
2. EXPOSED BOTTOM EDGE LESS THAN 18 INCHES ABOVE THE FLOOR
3. EXPOSED TOP EDGE GREATER THAN 36 INCHES ABOVE THE FLOOR.
4. ONE OR MORE WALKING SURFACES WITHIN 36 INCHES HORIZONTALLY OF THE GLAZING.
GLAZING IN GUARDRAILS AND RAILINGS.
GLAZING ADJACENT TO STAIRWAYS OR RAMPS.
- V. PROJECT CONSTRUCTION REQUIREMENTS:**
A. CRAWLSPACES SHALL BE NON-VENTED. THE CRAWL SPACE FLOOR SHALL BE COVERED WITH 6 MIL POLY VAPOR RETARDER WITH ALL JOINTS LAPPEED 6" MINIMUM AND SEALED OR TAPEED. EXTEND VAPOR RETARDER UP PERIMETER STEMWALLS AND SEAL TO WALLS AT 6" MINIMUM FROM TOP OF STEMWALL. VENTED MECHANICAL SYSTEM TO BE PROVIDED.
B. ALL FRAMED WALLS SHALL HAVE AN EXTERIOR MOISTURE BARRIER AS FOLLOWS:
TYPEK OR EQUAL AT WOOD SIDING OR HARDI-PLANK SIDING
ONE LAYER 30# FELT AT MASONRY VENEER
TWO LAYERS 15# FELT AT STUCCO
C. ALL WINDOWS SHALL BE FLASHED ACCORDING TO THE MANUFACTURER'S INSTRUCTIONS
D. AT MASONRY VENEER, PROVIDE FLEXIBLE MEMBRANE FLASHING AT THE BASE OF ALL WALLS AND AT WINDOW AND DOOR HEADS. PROVIDE FVG KEEPS AT 24 INCHES O.C. DIRECTLY ABOVE THE FLASHING.
E. A. FOLLOWING ARE MINIMUM INSULATION REQUIREMENTS:
ROOF/CEILINGS: R-48
FRAMED EXTERIOR WALLS: R-19
CRAWL SPACE/FLOORS: R-30
BASEMENT WALLS: R-10
PROVIDE VAPOR BARRIER AT THE WARM SIDE AT ALL FIBER/BLANKET INSULATION.
- VI. PROJECT WORKMANSHIP:**
A. ALL WORK SHALL BE ERECTED AND INSTALLED PLUMB, LEVEL, SQUARE, TRUE AND IN PROPER ALIGNMENT.
B. ALL MATERIALS SHALL BE NEW, UNUSED AND OF THE HIGHEST QUALITY IN EVERY RESPECT, UNLESS OTHERWISE NOTED. MANUFACTURED MATERIALS AND EQUIPMENT SHALL BE INSTALLED PER MANUFACTURER'S RECOMMENDATIONS AND INSTRUCTIONS.
C. THERE SHALL BE NO SUBSTITUTION OF MATERIALS WHERE A MANUFACTURER IS SPECIFIED. WHERE THE TERMS "EQUAL TO" OR "APPROVED EQUAL" ARE USED, THE ARCHITECT SHALL DETERMINE EQUALITY BASED ON INFORMATION SUBMITTED BY THE SUBCONTRACTOR.
D. SUBCONTRACTOR SHALL BE RESPONSIBLE FOR CUTTING AND PATCHING REQUIRED FOR HIS WORK.
E. SUBCONTRACTOR SHALL AT ALL TIMES KEEP THE PREMISES FREE OF ACCUMULATION OF WASTE MATERIALS OR RUBBISH. PREMISES TO BE SWEEP CLEAN DAILY OF RELATED CONSTRUCTION DEBRIS. AT THE COMPLETEION OF THE WORK, LEAVE THE JOB SITE FREE OF ALL MATERIALS AND BROOM CLEAN.
F. PATCH ALL AREAS WHERE FLOOR IS NOT LEVEL OR TRUE PRIOR TO THE INSTALLATION OF FLOORING OR CARPETING.

DRAWING INDEX

GENERAL	
G-101	COVER SHEET
SITE	
AS-101	SITE PLAN- OVERALL
AS-102	SITE PLAN
ARCHITECTURAL	
A-101	MAIN FLOOR PLAN
A-102	ROOF PLAN
A-103	REFLECTED CEILING PLAN
A-201	EXTERIOR ELEVATIONS
A-202	EXTERIOR ELEVATIONS
A-303	WALL SECTIONS
A-301	BUILDING SECTIONS
STRUCTURAL	
S-201	FOUNDATION PLAN

RIDGWAY ATHLETIC PAVILION

594C SABETA DRIVE
RIDGWAY, CO 81432

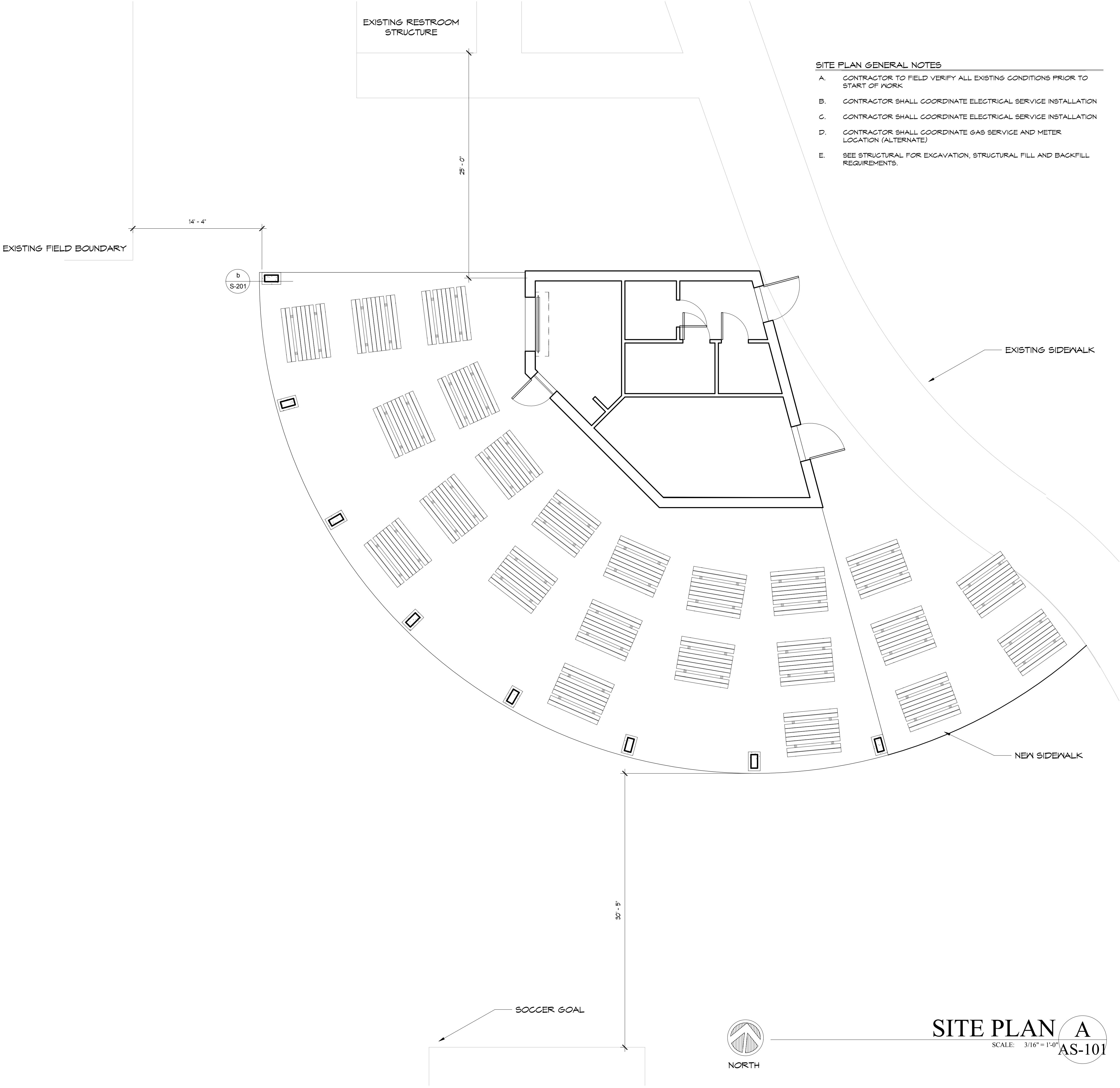
JOB. NO.: 19175
DATE: 2019-12-06
DRAWN BY: RA+A

ISSUE RECORD:

REVISIONS:

G-101

COVER SHEET



- SITE PLAN GENERAL NOTES**
- A. CONTRACTOR TO FIELD VERIFY ALL EXISTING CONDITIONS PRIOR TO START OF WORK
 - B. CONTRACTOR SHALL COORDINATE ELECTRICAL SERVICE INSTALLATION
 - C. CONTRACTOR SHALL COORDINATE ELECTRICAL SERVICE INSTALLATION
 - D. CONTRACTOR SHALL COORDINATE GAS SERVICE AND METER LOCATION (ALTERNATE)
 - E. SEE STRUCTURAL FOR EXCAVATION, STRUCTURAL FILL AND BACKFILL REQUIREMENTS.



**REYNOLDS ASH
+ ASSOCIATES**

**ARCHITECTURE
ENGINEERING**

1140 MAIN AVE, STE. B
DURANGO, CO 81301
(970) 259-7494
FAX (970) 259-7492

262 PAGOSA STREET, STE. 200
P.O. BOX 96
PAGOSA SPRINGS, CO 81147
(970) 264-6884

RA-AE.COM

REYNOLDS ASH + ASSOCIATES, P.C.
EXPRESSLY RESERVES THE COMMON LAW COPYRIGHT
AND OTHER PROPERTY RIGHTS IN THESE PLANS. THESE
PLANS ARE NOT TO BE CHANGED OR COPIED IN ANY
FORM OR MANNER WHATSOEVER NOR ARE THEY TO BE
ASSIGNED TO ANY THIRD PARTY WITHOUT FIRST
OBTAINING WRITTEN PERMISSION AND CONSENT OF
THE ARCHITECT OF RECORD.

THE USE OF THESE PLANS AND SPECIFICATIONS SHALL
BE RESTRICTED TO THE ORIGINAL SITE FOR WHICH
THEY WERE PREPARED AND PUBLICATION THEREOF IS
EXPRESSLY LIMITED TO SUCH USE. FEDERAL LAW
PROHIBITS THE REPRODUCTION, DISPLAY, SALE OR
OTHER DISPOSITION OF THIS DOCUMENT WITHOUT THE
EXPRESS WRITTEN CONSENT OF
RA+A ARCHITECTS, P.C.

RIDGWAY ATHLETIC PAVILION

594C SABETA DRIVE
RIDGWAY, CO 81432

JOB. NO.: 19175
DATE: 2019-12-06
DRAWN BY: RA+A

ISSUE RECORD:

REVISIONS:

AS-101

SITE PLAN -
OVERALL



262 PAGOSA STREET, STE. 200
P.O. BOX 96
PAGOSA SPRINGS, CO 81147
(303) 261-6004

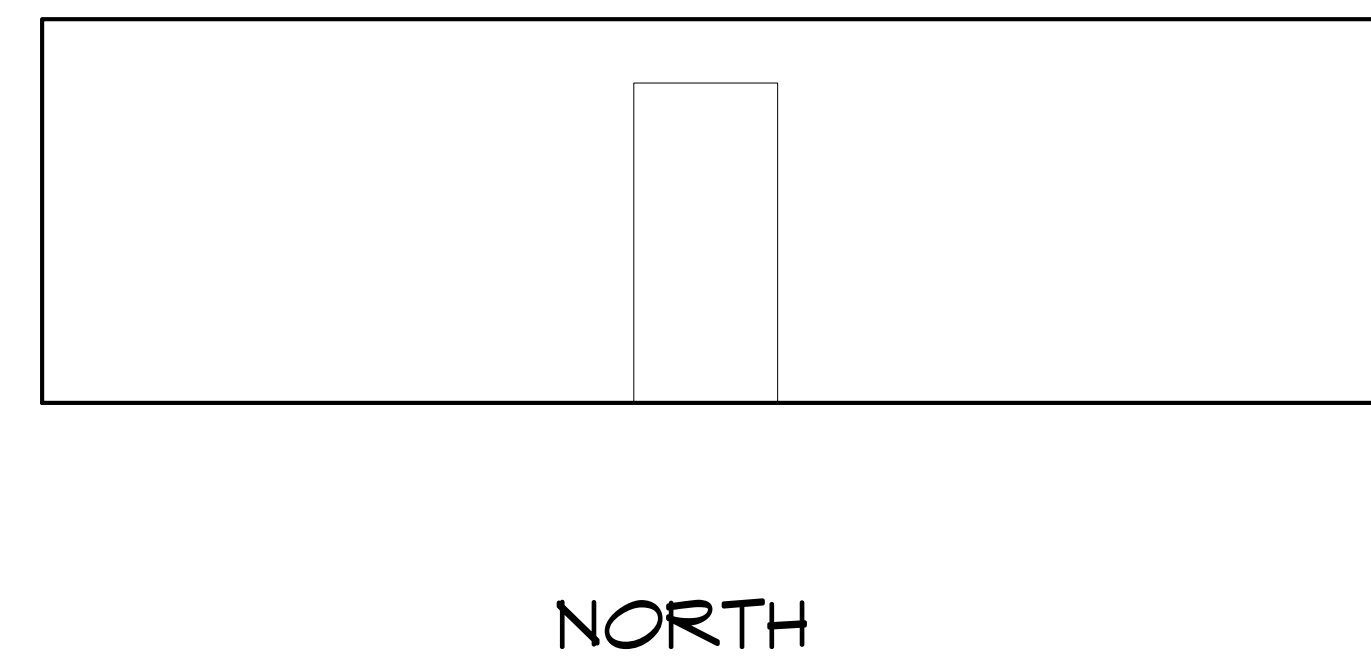
THE USE OF THESE PLANS AND SPECIFICATIONS SHALL BE RESTRICTED TO THE ORIGINAL SITE FOR WHICH THEY WERE PREPARED AND PUBLICATION THEREOF IS EXPRESSLY LIMITED TO SUCH USE. FEDERAL LAW PROHIBITS THE REPRODUCTION, DISPLAY, SALE OR OTHER DISPOSITION OF THIS DOCUMENT WITHOUT THE EXPRESS WRITTEN CONSENT OF RA+A ARCHITECTS, P.C.

594C SABETA DRIVE
RIDGWAY, CO 81432

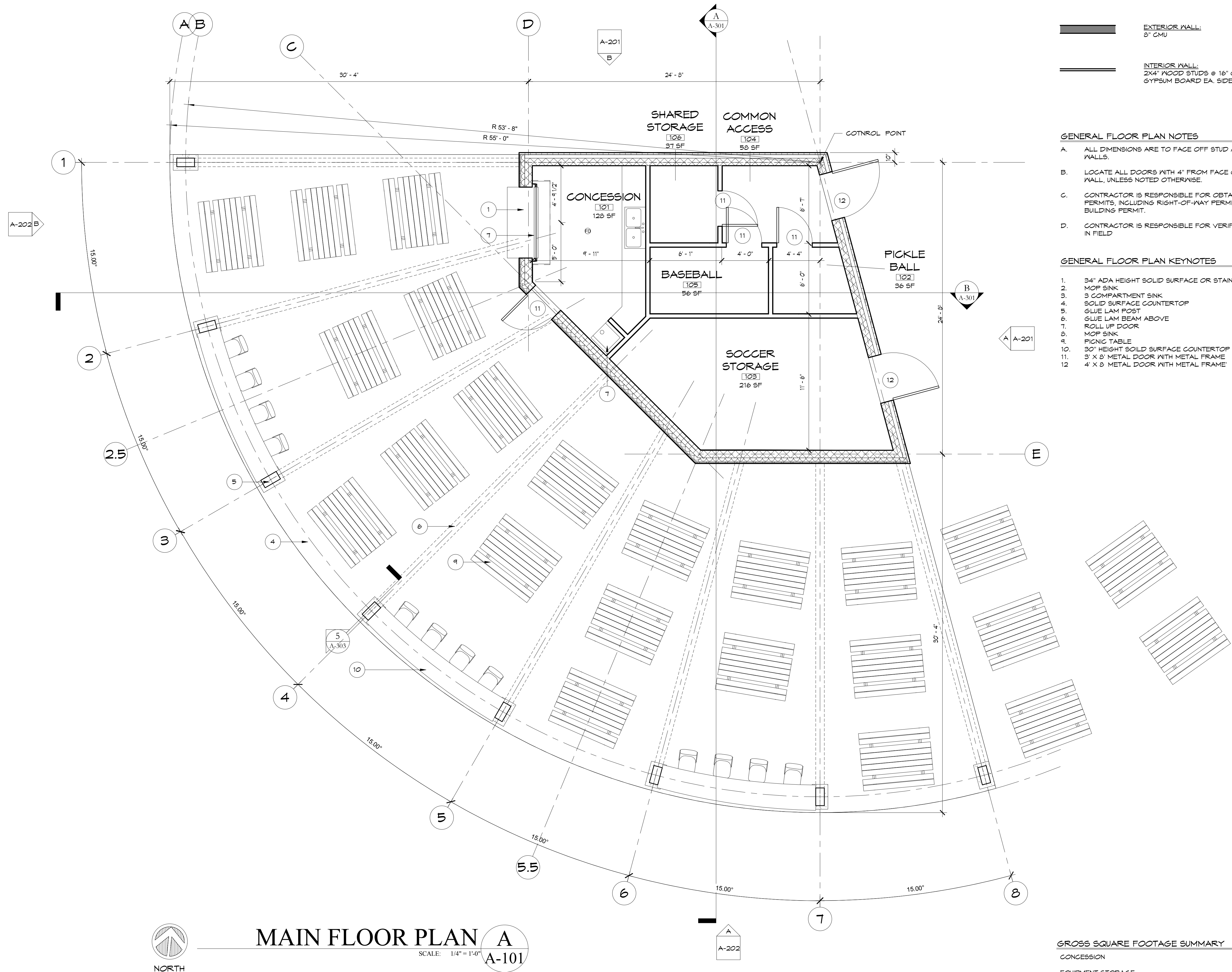
ISSUE RECORD:

AS 102

SITE PLAN



SCALE: 1/4" = 1'-0" **AS-102**



WALL TYPE LEGEND

- EXTERIOR WALL:
8" CMU
- INTERIOR WALL:
2X4" WOOD STUDS @ 16" O.C.
GYPSUM BOARD EA. SIDE

GENERAL FLOOR PLAN NOTES

- A. ALL DIMENSIONS ARE TO FACE OFF STUD AT INTERIOR AND EXTERIOR WALLS.
- B. LOCATE ALL DOORS WITH 4" FROM FACE OF JAMB TO ADJACENT WALL, UNLESS NOTED OTHERWISE.
- C. CONTRACTOR IS RESPONSIBLE FOR OBTAINING ALL NECESSARY PERMITS, INCLUDING RIGHT-OF-WAY PERMIT FOR UTILITIES & CITY BUILDING PERMIT.
- D. CONTRACTOR IS RESPONSIBLE FOR VERIFYING ALL MEASUREMENTS IN FIELD

GENERAL FLOOR PLAN KEYNOTES

1. 34" ADA HEIGHT SOLID SURFACE OR STAINLESS STEEL COUNTERTOP
2. MOP SINK
3. 3 COMPARTMENT SINK
4. SOLID SURFACE COUNTERTOP
5. GLUE LAM POST
6. GLUE LAM BEAM ABOVE
7. ROLL UP DOOR
8. MOP SINK
9. PICNIC TABLE
10. 30" HEIGHT SOLID SURFACE COUNTERTOP AND STADIUM SEATS
11. 8' X 8' METAL DOOR WITH METAL FRAME
12. 4' X 8' METAL DOOR WITH METAL FRAME

GROSS SQUARE FOOTAGE SUMMARY

CONCESSION	120 SF
EQUIPMENT STORAGE	530 SF
TOTAL	660 SF
UNCONDITIONED DECK SPACE	2,211 SF



REYNOLDS ASH
+ ASSOCIATES

ARCHITECTURE
ENGINEERING

1140 MAIN AVE, STE. B
DURANGO, CO 81301
(970) 259-7494
FAX (970) 259-7492

262 PAGOSA STREET, STE. 200
P.O. BOX 96
PAGOSA SPRINGS, CO 81447
(970) 264-6884

RA-AE.COM

REYNOLDS ASH + ASSOCIATES, P.C.
REYNOLDS ASH + ASSOCIATES, P.C.
EXPRESSLY RESERVES THE COMMON LAW COPYRIGHT
AND OTHER PROPERTY RIGHTS IN THESE PLANS. THESE
PLANS ARE NOT TO BE CHANGED OR COPIED IN ANY
FORM OR MANNER WHATSOEVER NOR ARE THEY TO BE
ASSIGNED TO ANY THIRD PARTY WITHOUT FIRST
OBTAINING WRITTEN PERMISSION AND CONSENT OF
THE ARCHITECT OF RECORD.

THE USE OF THESE PLANS AND SPECIFICATIONS SHALL
BE RESTRICTED TO THE ORIGINAL SITE FOR WHICH
THEY WERE PREPARED AND PUBLICATION THEREOF IS
EXPRESSLY LIMITED TO SUCH USE. FEDERAL LAW
PROHIBITS THE REPRODUCTION, DISPLAY, SALE OR
OTHER DISPOSITION OF THIS DOCUMENT WITHOUT THE
EXPRESS WRITTEN CONSENT OF
RA+A ARCHITECTS, P.C.

RIDGWAY ATHLETIC PAVILION

594C SABETA DRIVE
RIDGWAY, CO 81432

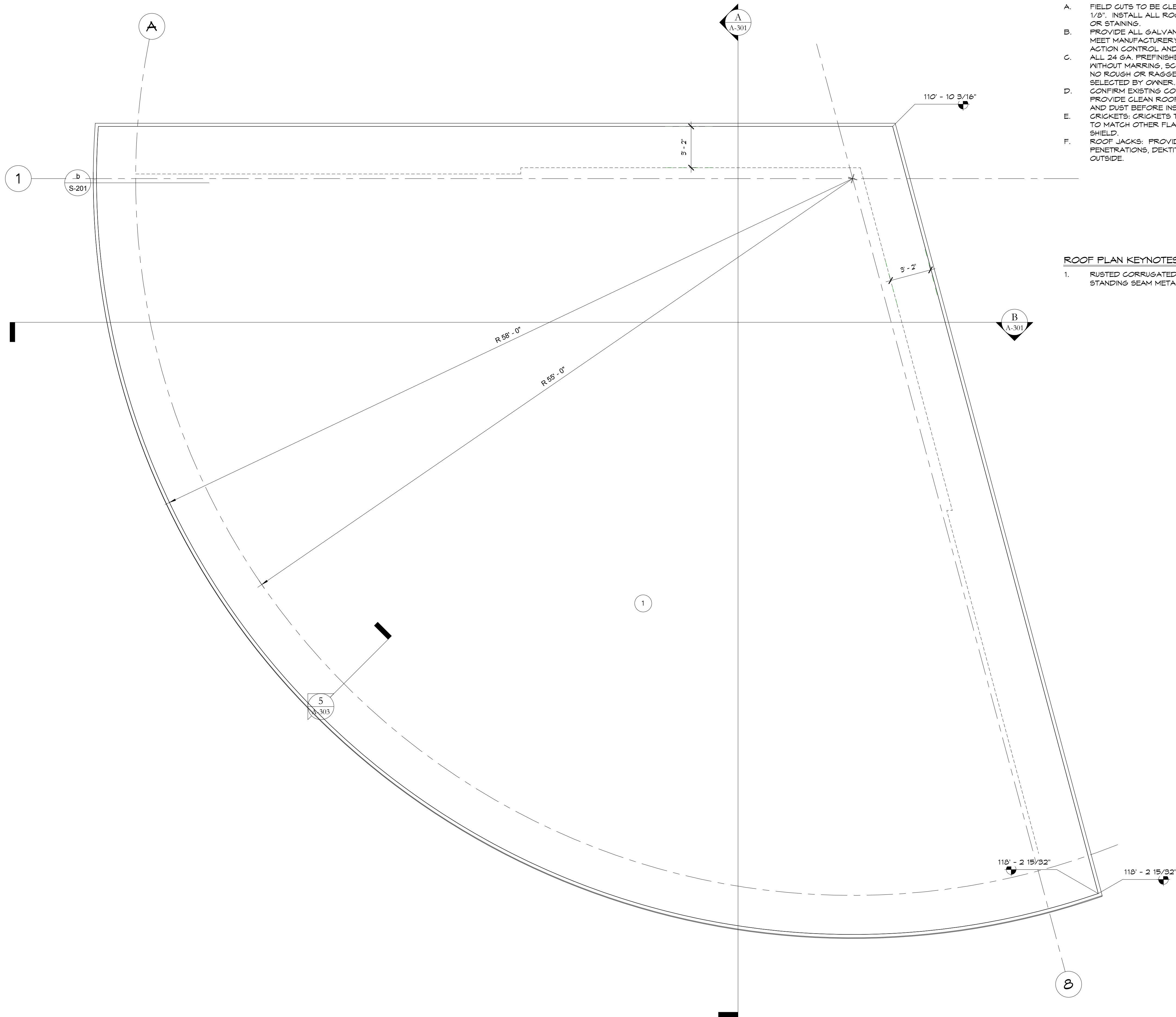
JOB. NO.: 19175
DATE: 2019-12-06
DRAWN BY: RA+A

ISSUE RECORD:

REVISIONS:

A-101

MAIN FLOOR PLAN



- ROOF PLAN GENERAL NOTES**
- A. FIELD CUTS TO BE CLEAN WITHOUT ROUGH OR RAGGED EDGES TO 1/8". INSTALL ALL ROOFING WITHOUT MARRING, FOLDING, TEARING OR STAINING.
 - B. PROVIDE ALL GALVANIZED NAILS, SEALANTS & FASTENERS TO MEET MANUFACTURER'S REQUIREMENTS FOR WIND & CAPILLARY ACTION CONTROL AND WARRANTY.
 - C. ALL 24 GA. PREFINISHED METAL FLASHINGS TO BE INSTALLED WITHOUT MARRING, SCRATCHING, BENDING OR RIPPLES. LEAVE NO ROUGH OR RAGGED EDGES SHOWING. COLOR TO BE SELECTED BY OWNER.
 - D. CONFIRM EXISTING CONDITIONS BEFORE ORDERING MATERIALS. PROVIDE CLEAN ROOF SURFACE FREE FROM DEBRIS, GREASE AND DUST BEFORE INSTALLING ROOFING.
 - E. CRICKETS: CRICKETS TO BE 24 GA. PREFINISHED METAL, COLOR TO MATCH OTHER FLASHINGS. INSTALL OVER ICE AND WATER SHIELD.
 - F. ROOF JACKS: PROVIDE ROOF JACKS AT ALL ROOF PENETRATIONS, DEKITE OR EQUAL. NO MASTIC TO SHOW ON OUTSIDE.

- ROOF PLAN KEYNOTES**
- 1. RUSTED CORRUGATED METAL ROOFING OR STANDING SEAM METAL ROOF (ALTERNATE)



ROOF PLAN
SCALE: 1/4" = 1'-0"
A-102

**REYNOLDS ASH
+ ASSOCIATES**
**ARCHITECTURE
ENGINEERING**

1140 MAIN AVE, STE. B
DURANGO, CO 81301
(970) 259-7494
FAX (970) 259-7492

262 PAGOSA STREET, STE. 200
P.O. BOX 96
PAGOSA SPRINGS, CO 81147
(970) 264-6884

RA-AE.COM

REYNOLDS ASH + ASSOCIATES, P.C.
EXPRESSLY RESERVES THE COMMON LAW COPYRIGHT
AND OTHER PROPERTY RIGHTS IN THESE PLANS. THESE
PLANS ARE NOT TO BE CHANGED OR COPIED IN ANY
FORM OR MANNER WHATSOEVER NOR ARE THEY TO BE
ASSIGNED TO ANY THIRD PARTY WITHOUT FIRST
OBTAINING WRITTEN PERMISSION AND CONSENT OF
THE ARCHITECT OF RECORD.

THE USE OF THESE PLANS AND SPECIFICATIONS SHALL
BE RESTRICTED TO THE ORIGINAL SITE FOR WHICH
THEY WERE PREPARED AND PUBLICATION THEREOF IS
EXPRESSLY LIMITED TO SUCH USE. FEDERAL LAW
PROHIBITS THE REPRODUCTION, DISPLAY, SALE OR
OTHER DISPOSITION OF THIS DOCUMENT WITHOUT THE
EXPRESS WRITTEN CONSENT OF
RA+A ARCHITECTS, P.C.

RIDGWAY ATHLETIC PAVILION

594C SABETA DRIVE
RIDGWAY, CO 81432

JOB. NO.: 19175
DATE: 2019-12-06
DRAWN BY: RA+A

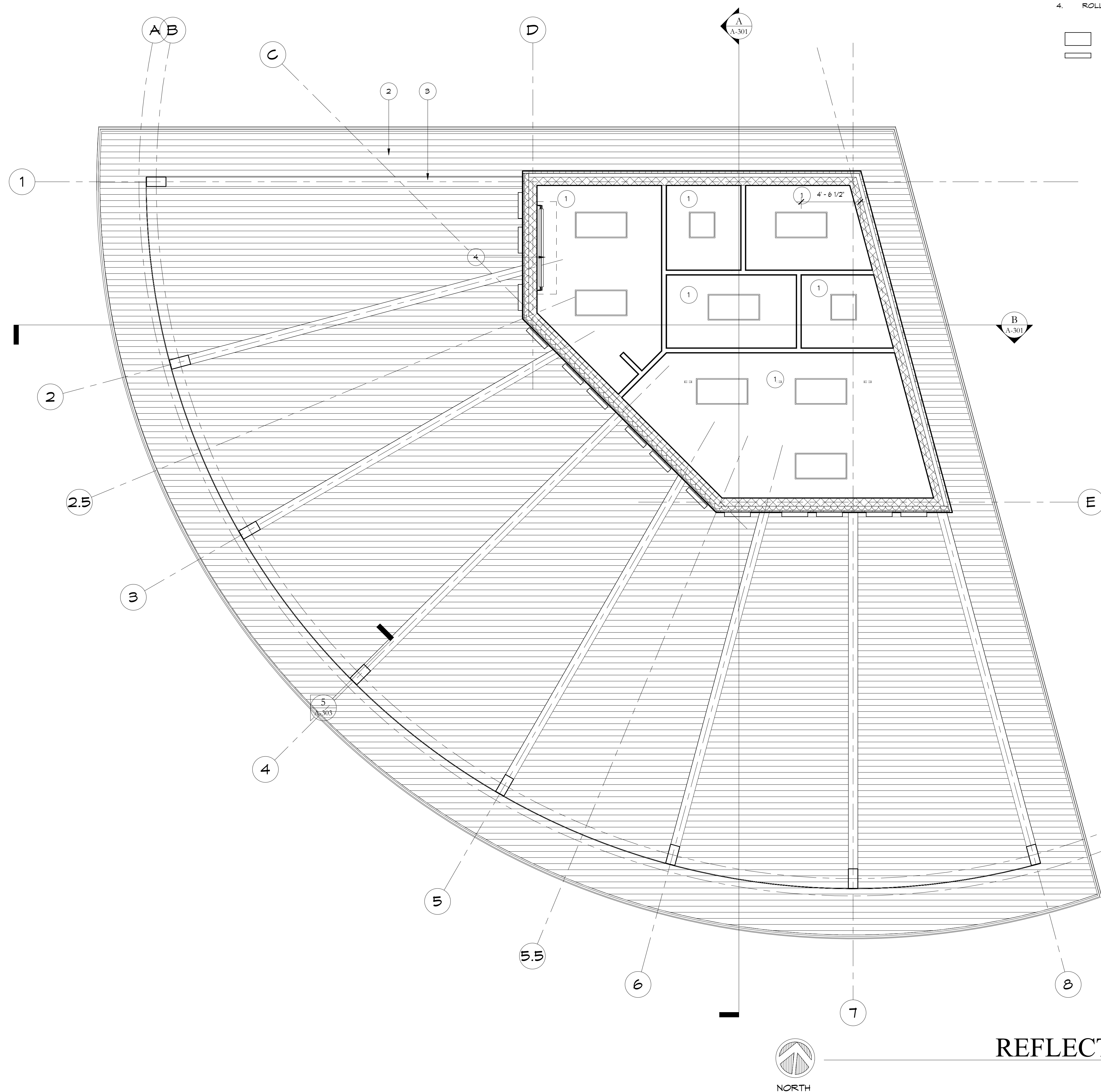
ISSUE RECORD:

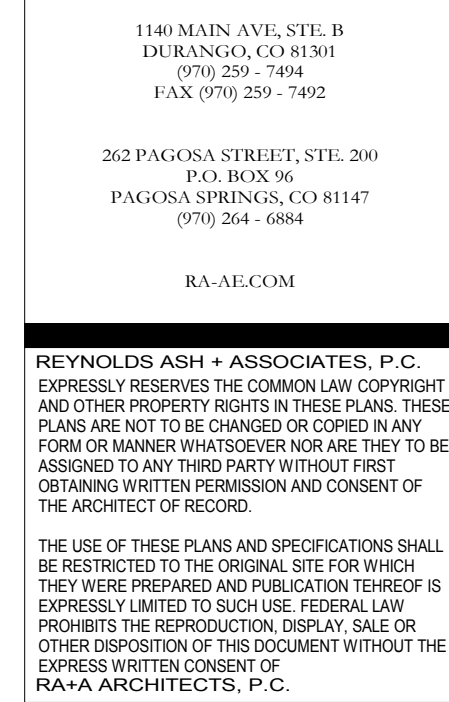
REVISIONS:

A-102
ROOF PLAN

1. CEILING: 5/8" GYP. BRD. CLG APPLIED DIRECTLY TO BOTTOM OF JOISTS.
2. TOUNGE AND GROOVE PINE
3. GLULAM BEAM, SEE STRUCTURAL
4. ROLL UP DOOR

- ☐ LED LIGHT FIXTURE
 - ☐ WALL MOUNTED UP LIGHTING





594C SABETA DRIVE
RIDGWAY, CO 81432

ISSUE RECORD:

A-201

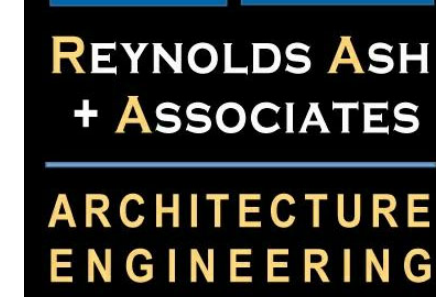
EXTERIOR
ELEVATIONS

1. METAL PANEL - WITH VANDAL PROOF COATING
2. STUCCO
3. STUCCO PREPPED FOR MURAL WITH VANDAL PROOF COATING
4. CORRUGATED RUSTED METAL ROOF
STANDING SEAM METAL ROOF (ALTERNATE)
5. COMPOSITE FASCIA WITH SHADOWBOARD
6. EXTERIOR GLULAM POST / BEAM, SEE STRUCTURAL
7. STAINLESS STEEL OR SOLID SURFACE COUNTERTOP
8. ROLL UP DOOR
9. CONCRETE POST BASES
10. DOOR PREPPED FOR MURAL WITH VANDAL PROOF COATING
11. TONGUE AND GROOVE PINE SOFFIT
12. METAL SHADE STRUCTURE
13. 30" HIGH SOLID SURFACE COUNTERTOP





1. METAL PANEL - WITH VANDAL PROOF COATING
2. STUCCO
3. STUCCO FREPPED FOR MURAL WITH VANDAL PROOF COATING
4. CORRUGATED RUSTED METAL ROOF
STANDING SEAM METAL ROOF (ALTERNATE)
5. COMPOSITE FASCIA WITH SHADONBOARD
6. EXTERIOR GULUAM POST / BEAM, SEE STRUCTURAL
7. STAINLESS STEEL OR SOLID SURFACE COUNTERTOP
8. ROLL UP DOOR
9. CONCRETE POST BASES
10. DOOR FREPPED FOR MURAL WITH VANDAL PROOF COATING
11. TONGUE AND GROOVE PINE SOFFIT
12. METAL SHADE STRUCTURE
13. 30" HIGH SOLID SURFACE COUNTERTOP



262 PAGOSA STREET, STE. 200
P.O. BOX 96
PAGOSA SPRINGS, CO 81147
(970) 264 - 6884

REYNOLDS ASH + ASSOCIATES, P.C.
EXPRESSLY RESERVES THE COMMON LAW COPYRIGHT
AND OTHER PROPERTY RIGHTS IN THESE PLANS. THESE
PLANS ARE NOT TO BE CHANGED OR COPIED IN ANY
FORM OR MANNER WHATSOEVER NOR ARE THEY TO BE
ASSIGNED TO ANY THIRD PARTY WITHOUT FIRST
OBTAINING WRITTEN PERMISSION AND CONSENT OF
THE ARCHITECT OF RECORD.

THE USE OF THESE PLANS AND SPECIFICATIONS SHALL BE RESTRICTED TO THE ORIGINAL SITE FOR WHICH THEY WERE PREPARED AND PUBLICATION THEREOF IS EXPRESSLY LIMITED TO SUCH USE. FEDERAL LAW PROHIBITS THE REPRODUCTION, DISPLAY, SALE OR OTHER DISPOSITION OF THIS DOCUMENT WITHOUT THE EXPRESS WRITTEN CONSENT OF RA+A ARCHITECTS, P.C.

RIDGWAY ATHLETIC PAVILION

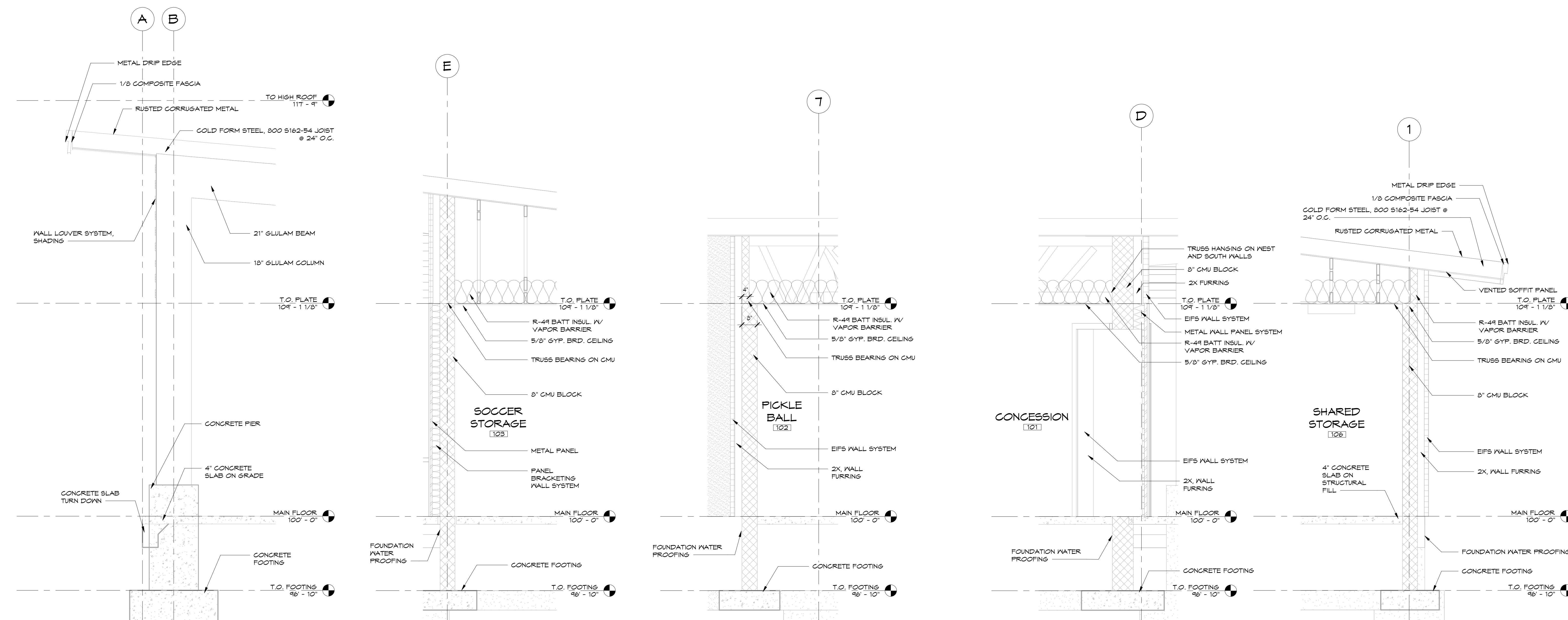
594C SABETA DRIVE
RIDGWAY, CO 81432

ISSUE RECORD:

REVISIONS:

A-303

WALL SECTIONS



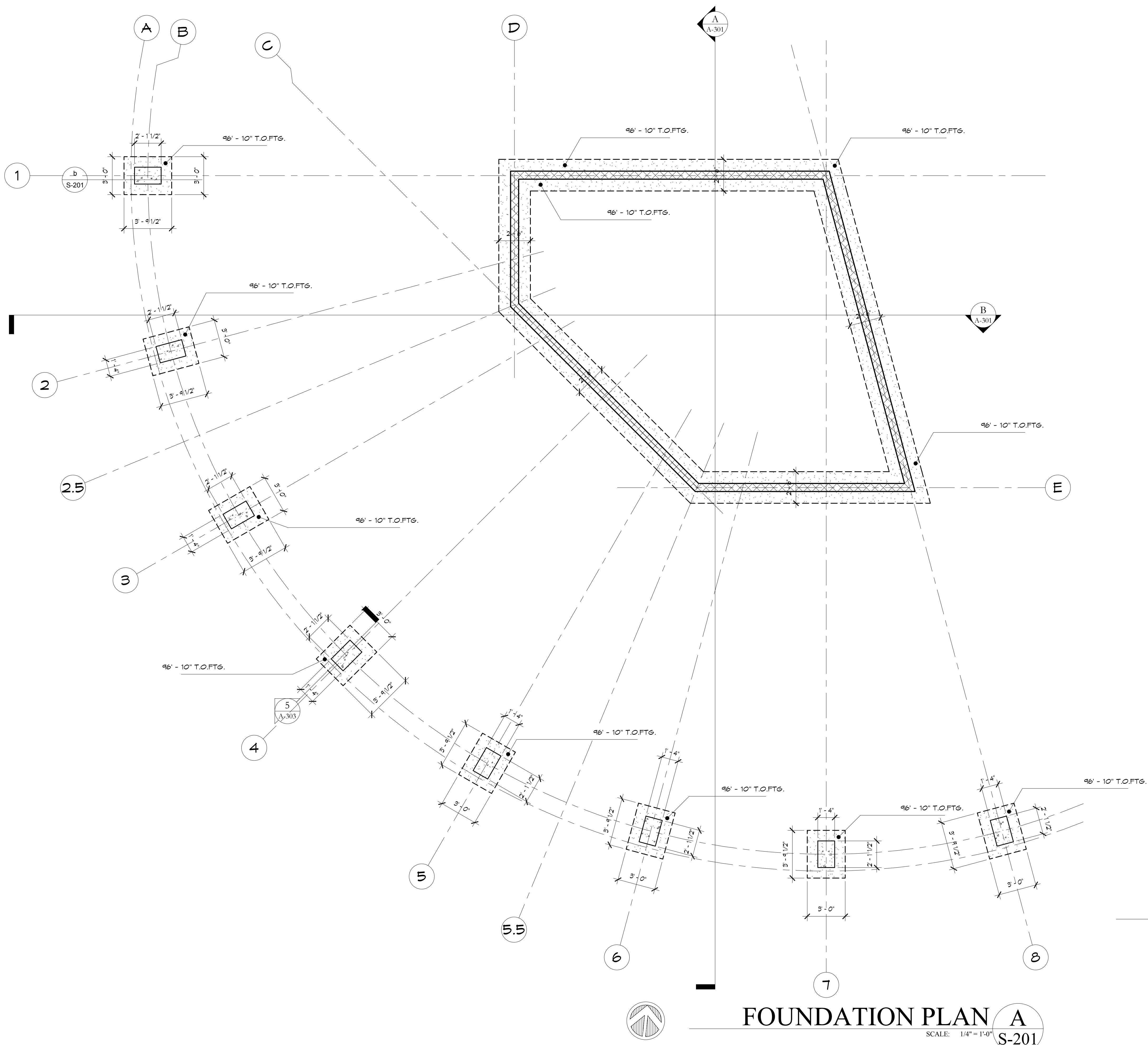
@GLULAM COLUMN **5**
SCALE: 1/2" = 1'-0" **A-303**

@BEARING WALL 4
SCALE: 1/2" = 1'-0"
A-303

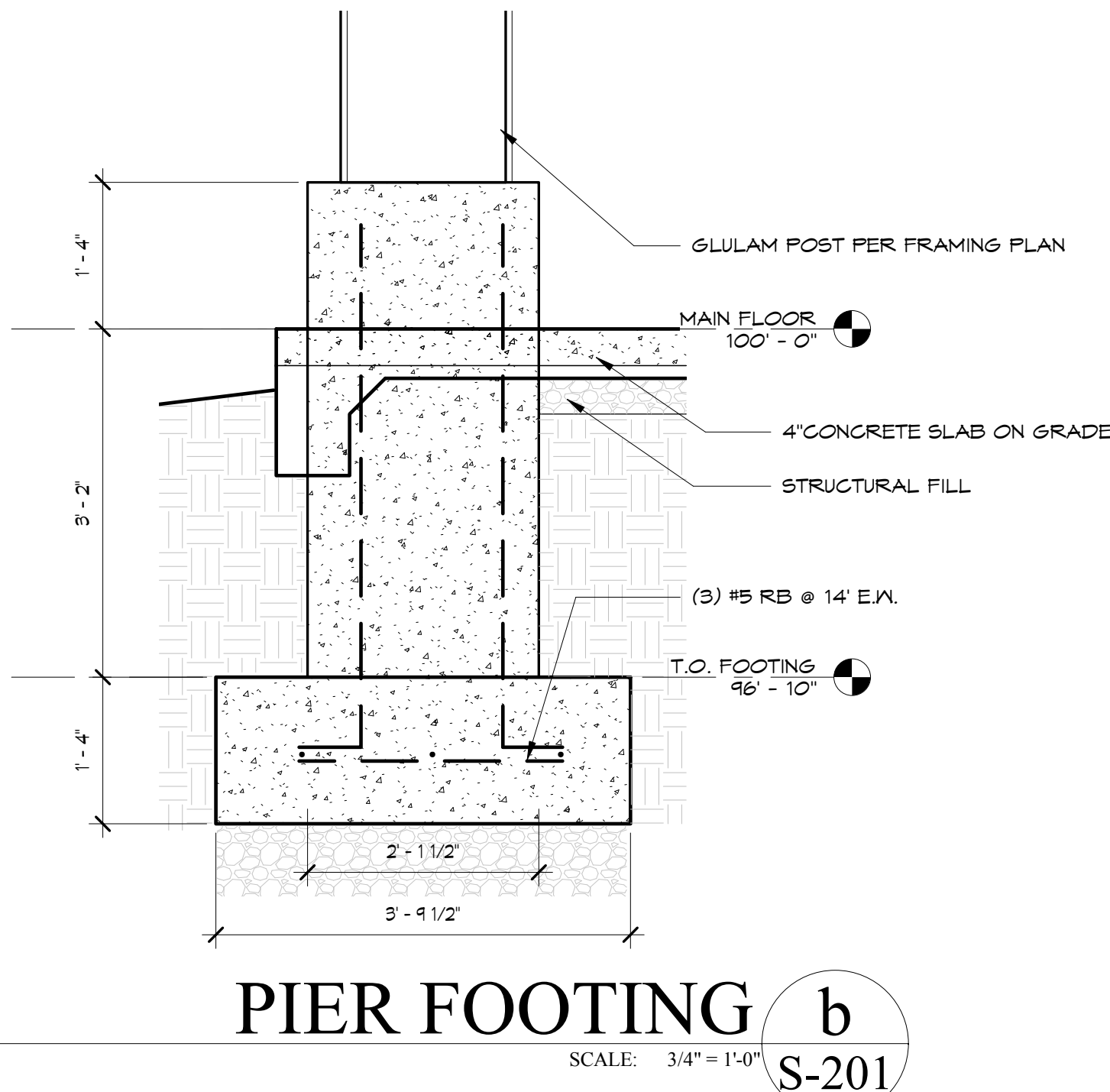
@CMU WALL 3
SCALE: 1/2" = 1'-0" **A-303**

@CONCESSION DOOR **2**
SCALE: 1/2" = 1'-0" **A-303**

@ GRID LINE 1 **1**
SCALE: 1/2" = 1'-0"
A-303



- GENERAL FLOOR PLAN NOTES
- A. ALL FOOTINGS SHALL BEAR A MINIMUM OF 42" BELOW LOWEST ADJACENT GRADE.
 - B. SEE GENERAL NOTES FOR CONCRETE REQUIREMENTS ON S-101.
 - C. DESIGN IS BASED ON BEARING ON 1500 PSF. NOTIFY ARCHITECT/ENGINEER IF NOT ON SOLID SHALE.
 - D. A/E TO INSPECT EXPOSED SUBGRADE PRIOR TO FORMING OF FOOTINGS.
 - E. CONTRACTOR TO VERIFY THAT SUBGRADE IS EXCAVATED TO NATIVE MATERIAL, AND NO EXPANSIVE OR LOW STRENGTH SOILS ARE ENCOUNTERED.
 - F. CONTRACTOR TO VERIFY EXISTING SITE CONDITIONS AND FOUNDATION ELEVATIONS PRIOR TO START OF WORK AND SHALL NOTIFY A/E OF ANY DISCREPANCIES.
 - G. CONTRACTOR TO TEST AND VERIFY CONDITION OF EXISTING FOOTINGS TO BE REUSED.



FOUNDATION PLAN A
SCALE: 1/4" = 1'-0"

REYNOLDS ASH + ASSOCIATES
ARCHITECTURE ENGINEERING

1140 MAIN AVE, STE. B
DURANGO, CO 81301
(970) 259-7494
FAX (970) 259-7492

262 PAGOSA STREET, STE. 200
P.O. BOX 96
PAGOSA SPRINGS, CO 81447
(970) 264-6884

RA-AE.COM

REYNOLDS ASH + ASSOCIATES, P.C.
EXPRESSLY RESERVES THE COMMON LAW COPYRIGHT AND OTHER PROPERTY RIGHTS IN THESE PLANS. THESE PLANS ARE NOT TO BE CHANGED OR COPIED IN ANY FORM OR MANNER WHATSOEVER NOR ARE THEY TO BE ASSIGNED TO ANY THIRD PARTY WITHOUT FIRST OBTAINING WRITTEN PERMISSION AND CONSENT OF THE ARCHITECT OF RECORD.

THE USE OF THESE PLANS AND SPECIFICATIONS SHALL BE RESTRICTED TO THE ORIGINAL SITE FOR WHICH THEY WERE PREPARED AND PUBLICATION THEREOF IS EXPRESSLY LIMITED TO SUCH USE. FEDERAL LAW PROHIBITS THE REPRODUCTION, DISPLAY, SALE OR OTHER DISPOSITION OF THIS DOCUMENT WITHOUT THE EXPRESS WRITTEN CONSENT OF RA+A ARCHITECTS, P.C.

RIDGWAY ATHLETIC PAVILION

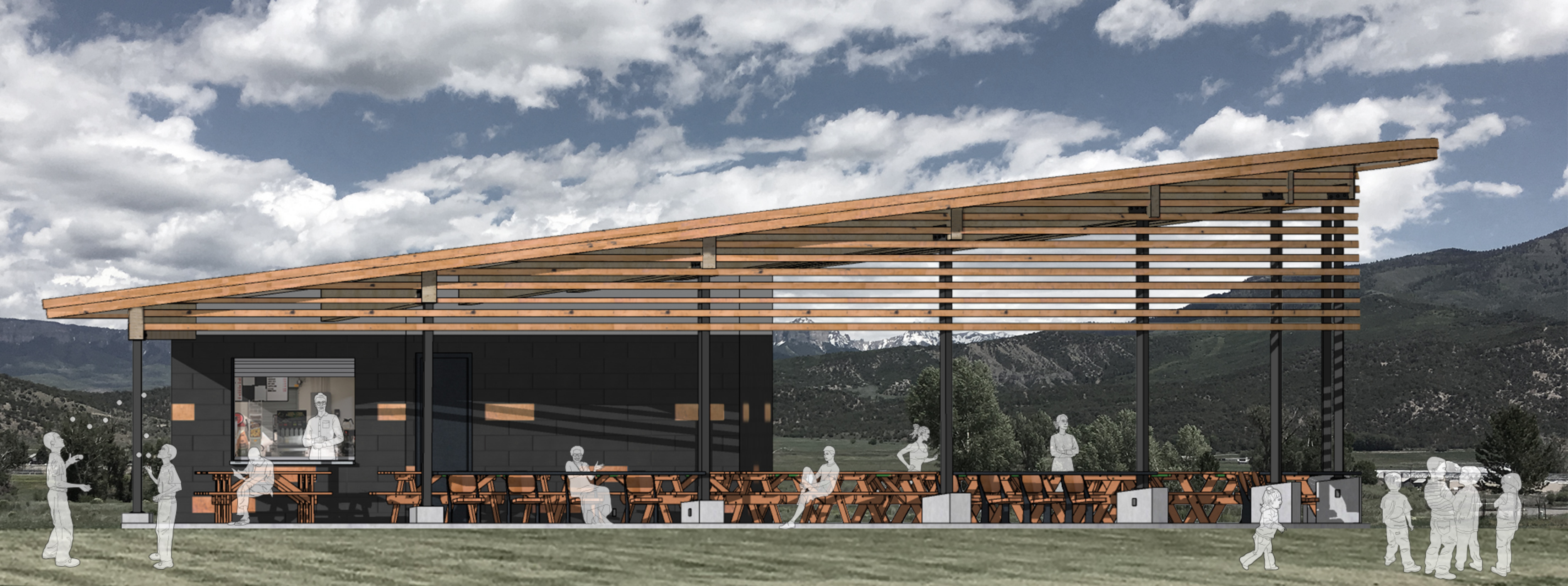
594C SABETA DRIVE
RIDGWAY, CO 81432

JOB. NO.: 19175
DATE: 2019-12-06
DRAWN BY: Author

ISSUE RECORD:

REVISIONS:

S-201
FOUNDATION PLAN



Agenda Item #6: