
PARKS, TRAILS, AND OPEN SPACE COMMITTEE

JULY 2ND, 2019

6:00 PM

TOWN HALL



Committee Member Meeting Packet

Agenda Item #2:

Parks, Trails, and Open Space Committee
Meeting Minutes from May 7th, 2019

PARKS, TRAILS, AND OPEN SPACE COMMITTEE
MEETING MINUTES
MAY 7TH, 2019
6:00 PM
TOWN HALL



Committee Present: Jared Coburn, Doug Canright, Mayor Pro Tem Eric Johnson, Town Councilor Robb Austin.

Town Staff: Chase Jones

- I. Call to Order:
6:09pm
- II. Approval of meeting minutes from March 5th, 2019
Jared moved to approve the minutes
Robb seconded the motion
All committee members present voted in favor
- III. Review upcoming public events
Chase shared all scheduled town events occurring before the next committee meeting on July 2nd 2019.
- IV. Chamber - Heritage improvements and RFP
The committee discussed the 'Colorado Main Street – Request for Proposals for the Ridgway Heritage Park and Visitor Center Construction and Bid Documents' and developed the following comments:
 - *The project would likely be ideal for a GOCO grant*
 - *In the height of ski season there are roughly 30 cars per day parking at that location*
 - *Consider moving the landscaping strip to the middle to help maximize parking spaces*
 - *Recommend to maximize parking*
 - *Certain members were not in favor of the larger tourist oriented structures, such as the "picture frame", but acknowledged there is a visitors center so there will need to be a balance between providing for local residents and tourists.*
 - *Incorporating Ute and Native American history should also be explored**Chase was to share the above comments with those involved. With the chamber having \$5,000 and the Main Street Development group having \$5,000 for improvements during 2019, there will likely not be enough funding for all improvements.*
- V. New Business
Ridgway Community Garden - Jared shared a brief update of the garden with the following being completed; fencing, gravel parkings lot, irrigation and the raised beds are being prepped. Opening day is scheduled for May 18th and a shade structure is planned to be built later in the summer. Jared thanked Town staff and the Public Works Department for their assistance in the project.

Sue Husch - The Committee recommended the appointment of Sue Husch to the Parks, Trails and Open Space Committee due to her interest and community involvement. The recommendation will be taken to Town Council during their next regular meeting for approval.

Tree funding – Eric suggested that the committee consider requesting twice the current annual budget for arborist work with annual increases from Town Council during the next budget season.

Trails near Solar Ranch – Doug inquired what trails will be regradeed during the planned 2019 trail work in Cottonwood Park. Chase is to discuss with other staff, review initial scope of work and funding limitations then return to the next meeting with an answer.

VI. Old Business

The committee was updated with the following information:

- *Picnic Tables – 22 new, 6 are ADA, tables are in each place committee prioritized previously*
- *Planting trees – 10 trees have been replaced, will get second order in when number is finalized*
- *Seasonal hires – 1 hired already, 2nd to start the 20th of May 2019*
- *Streetscape contract – maintenance contract has been renewed for 2019*
- *Pickleball – staff is working with contractor to set date to strip pickleball lines on the tennis court.*
- *Harmony Park – the ground beneath the instruments has been wood chipped. This work completed the project.*

VII. Adjourn
6:59pm

Agenda Item #3:

Upcoming Public Events

Events between July 2nd and September 3rd occurring on Town Park Property as of June 28th, 2019:

July, Aug – Friday Movie Nights

➤ Mountain Film Aug 2nd and 3rd

July, Aug, Sept – First Friday Walk the first Friday of each month

July Concerts – Every Thursday in July in Hartwell Park

July 6 – Wedding Anniversary Party in Athletic Park

July 27 – Wedding Party at Gazebo

Aug 4 – Hunters Education with CPW in Community Center and Town Hall parking lot

Aug 10-11 – Weehawken Arts and Crafts Festival in Hartwell Park

Aug 17 – Mount Sneffels ½ Marathon

Aug 18 – United Church of the San Juans using the Hartwell Pavilion

Sept 1 – Fire Dept Concert in the Park, after rodeo

Sept 2 – Ouray County Rodeo Assn Labor Day Parade and Picnic in Hartwell Park

Agenda Item #4:

Heritage Park Site Plan

Strategic Master Plan for RIDGWAY VISITOR CENTER & HERITAGE PARK

PREPARED BY DHM DESIGN MAY 2019

DHM DESIGN LANDSCAPE ARCHITECTURE
LAND PLANNING
URBAN DESIGN
1400 PARK AVE. SUITE 100
DURANGO, CO 81301 | 970.246.4100



TABLE OF CONTENTS

Table of Contents	2
Acknowledgments	2
Project Purpose	4
Existing Conditions	6
Existing Site Base Map	8
Proposed Design	10
Preferred Site Plan	12
Long Term Option 2 - New Visitor Center.....	14
Phasing & Priorities	16
Precedent Images	18
New Visitor Center Kiosk	18
New Visitor Center Building	19
Adaptive Reuse of Existing Visitor Center	20
Signage.....	21
Photo Opportunity Area - Option 1	22
Photo Opportunity Area - Option 2.....	23
Railroad Ties	24
Play Features - Climbing Boulder	25
Play Features - Tot Lot.....	26
Site Furnishings & Planting Elements.....	27
Cost Estimates	30
Funding Options	34
Appendix (Separate Document)	36

ACKNOWLEDGMENTS

Town of Ridgway

Diedra Silbert - Community Initiatives Facilitator

Ridgway Chamber of Commerce

Hilary Lewkowitz - Marketing Director

Erin Stadelman, Ouray County Fairgrounds & 4H Event Center - Secretary

Others

Ridgway Railroad Museum

Public Meeting Attendees

DHM Design

Walker Christensen, RLA - Principal

Cammie Willis, RLA - Landscape Architect



Ridgway Visitor Center: Heritage Park holds the Ridgway Railroad Museum. The railroad museum plans to be completely moved to a new location by the summer of 2020 leaving the building open for use by the Chamber of Commerce.

PROJECT PURPOSE

EXECUTIVE SUMMARY

This Strategic Plan for Ridgway Visitor Center & Heritage Park summarizes the public and design processes involved in determining proposed future park development. A public process was conducted in the format of two public meetings where community members were able to give input on the precedent images and designs that were displayed by the design team. The community input was utilized to create two plan designs for the park and visitor center that compiled the community members' ideas; these preliminary options featured one design with a new visitor center building and one that focused on outdoor kiosks which would not need volunteers to staff them. Community members commented on these preliminary site design options, which in correlation with the Town of Ridgway and Chamber of Commerce representatives' ideas, was used to create the final Preferred Site Plan and Long Term Option 2 - New Visitor Center site designs that will act as a guide for future park and visitor center development. The primary difference between these site plan options is that the Long Term Option 2 design features a new visitor center building that would need staffing to be open to the public, while the Preferred Site Plan does not have a new visitor center building and relies on information kiosks (which could be staffed or unstaffed) to welcome park visitors. The cost of the Long Term Option 2 plan is higher than that of the Preferred Site Plan. Phasing the construction of different park elements may vary as funding is acquired. A list of potential funding sources is also included in this Strategic Plan document.

BACKGROUND

Ridgway's Heritage park is located at the intersection of Highway 550 and Sherman Street/Highway 62—acting as the entrance into town from the east side. This site, which is owned by the Town of Ridgway, has most recently been used by the Ridgway Railroad Museum for their outdoor displays of railroad cars and indoor historical information. Currently, the Railroad Museum has been moving out of the site to a new location (200 North Railroad Street). A majority of the train cars have already been relocated to this new site. The remainder of the train museum information (the historical photos and documents) on display in the Visitor Center are planned to be moved to the new location by the summer of 2020. This will leave the current Visitor Center and Heritage Park as a blank slate for new park and visitor information uses.

PURPOSE

The purpose of this project was to obtain community input regarding the vision and direction of Heritage Park and Visitor Center—a critical gateway area to the Town of Ridgway and surrounding region. With the Railroad Museum moving out in 2020, the park will be empty and the Ridgway Chamber of Commerce will occupy the Visitor Center. The park site itself is in a key and highly visible location for the Town, although it is currently sparsely vegetated and is in need of maintenance and cleanup. Due to these changes happening with the park and visitor center, there was a clear need to get additional direction on determining future goals for the site. Therefore, with the goal of developing a strategic plan for the park and visitor center, the Chamber secured state grant funding to use towards re-imagining and redesigning this space. The funding was used to hire a team of design professionals to conduct a public process in order to gain community input on wish list items to incorporate in the strategic master plan design for the site. The public process consisted of several public meetings where precedents and concept plans were displayed and discussed with meeting attendees. (Refer to page 10 for a detailed description of the public process.)

DESIGN PROCESS & GOALS

The design process involved using community input to guide the site plan layout until a Preferred Site Plan and Long Term Option 2 were developed. (See these plans on pages 12-15.) The plan features site elements, such as signage, information kiosks, play features, planting areas, picnic areas, walks, and restrooms. These park elements were determined to be important and were edited based on the community feedback at the public meetings and the final versions of these are reflected in this document. Precedent images and photomontages of these elements are featured on pages 18-29. The site plan and these features comprise the Strategic Plan for Ridgway Visitor Center and Heritage Park. The primary goal of this strategic plan document is to outline a cohesive and achievable site master plan for the Town of Ridgway that can guide future park developments and improvements as funding is acquired. (Refer to page 30 for a preliminary cost estimate of the preferred site plan and to page 34 for a list of funding options.)

Goals that the community, Town of Ridgway, and Chamber of Commerce had for this project include the following:

- Attract visitors to stop year-round
- Develop visitor center options that feature self-guided informational signage so that volunteers do not have to be present for the visitor center to function
- Improve park amenities and aesthetics
- Develop a plan for ADA restrooms that can be accessible from the exterior so that the visitor center doesn't have to be open for passers-by to use these facilities
- Develop a parking organization plan for the gravel lot
- Determine park purpose and amenities needed in order to be successful
- Develop ideas for small play features and other desired community resources
- Offer visitors rest area amenities such as picnic space, restroom facilities, dog walk, play opportunities, etc.



Ridgway Visitor Center: The current Visitor Center building was historically used by the Fairgrounds as a hog barn.

EXISTING CONDITIONS

Heritage Park features the museum building, a gravel parking lot, a large empty linear gravel area that was recently being used to hold railroad cars on display for the Ridgway Railroad Museum, and an existing gateway sign and plantings near Highway 550. There is also a small wooden pergola located near the Visitor Center. Numerous railroad ties that would be removed and replaced with new, non-toxic, pressure-treated railroad ties in the overall park master plan. There are two small structures between the parking lot and the fairgrounds—an old kiosk sign and a small storage shed; these site elements are in poor condition and may be in need of replacement. The parking lot holds about 30 cars and is currently functioning as a bus “park and ride” drop-off/pick-up and carpool location for workers commuting to and from Telluride. The Ouray County Fairgrounds are located directly to the south of Heritage Park and can be accessed through the main entry location off of Highway 550 or by passing into and through Heritage Park via Race Course Road. Event parking for the Fairgrounds may fill up the Heritage Park parking lot on occasion.

Much of the site has piles of debris and weeds and is in need of some clean up. There are several trees that have grown to block visibility of key locations on site; these may need to be trimmed or removed to open up site views.



Park Entry - Park users may enter the site by passing beneath the old Fairgrounds sign via Race Course Road.



ADA Parking - The parking lot features a designated ADA parking space sign close to the Visitor Center building.



Gravel Parking Lot - The park has a gravel parking lot with undefined parking spaces and usually holds about 30 vehicles.



Old Structures - An old storage shed and information kiosk have been placed in Heritage Park near the Fairgrounds.



Trestle - Railroad ties have been shaped into a trestle feature near the east end of the park next to the Fairgrounds.



Train Car - The Ridgway Railroad Museum left one of its train cars in the park, which could be used in the new park plan.



Debris - Small piles of debris are located in Heritage Park. These spaces are in need of some cleanup and weeding.



Visitor Center - The interior of the visitor center building is small and tight in its current layout. The restroom is not ADA.



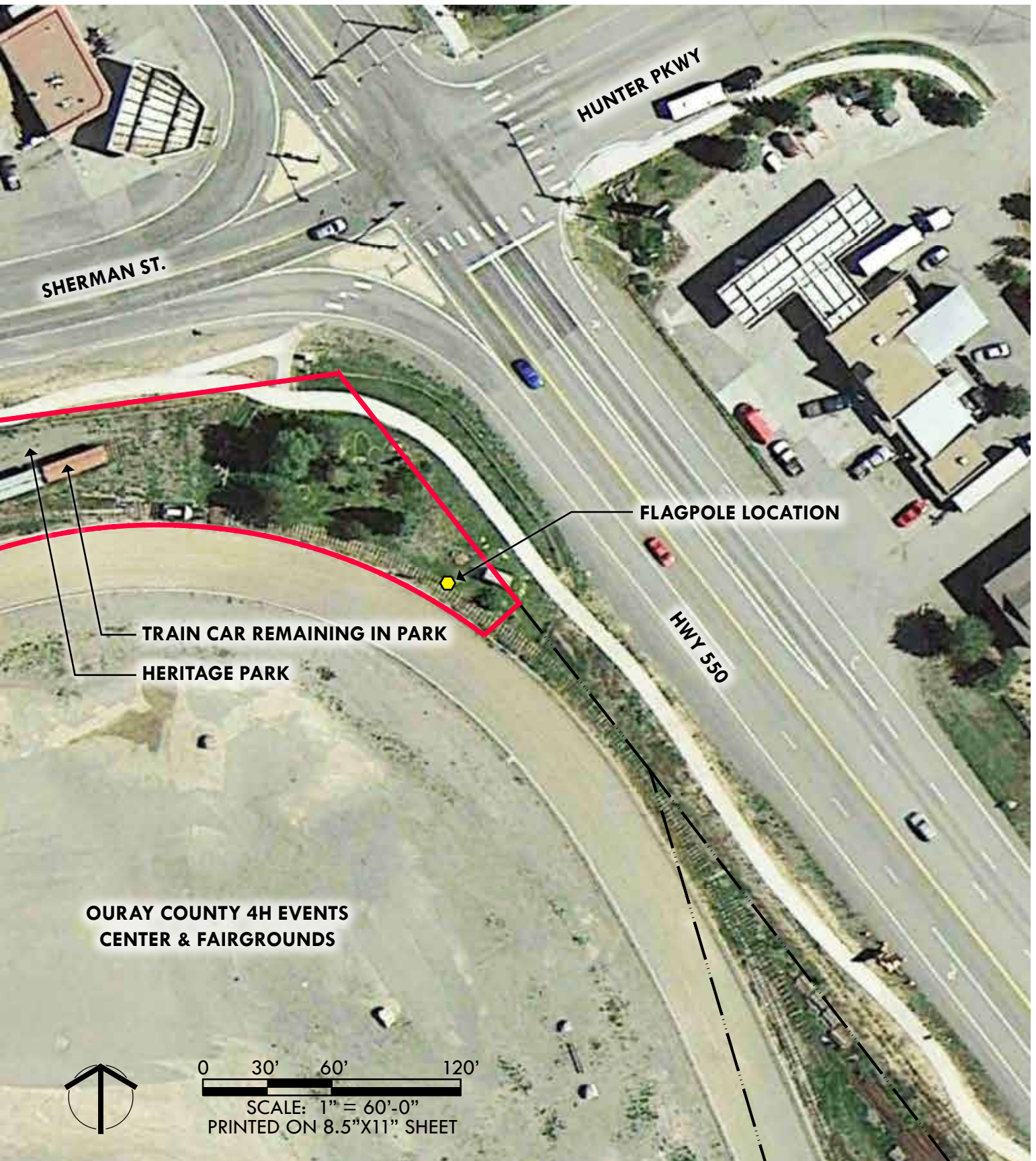
Planting - Some of the existing park vegetation has grown to screen key site elements—such as this gateway sign in the park near Highway 550.



Gateway Sign - A current Ridgway sign is located in the park near the 550 & Sherman St. intersection. This sign is undersized and outdated—featuring the old Town catchphrase.

EXISTING SITE BASE MAP





PROPOSED DESIGN

USING PUBLIC PROCESS TO GUIDE DESIGN

The proposed Master Plan Design was created with the input provided at the Public Meetings held in the Ridgway Town Hall Community Center on Thursday, March 28th, 2019 and Monday, April 29th, 2019. The initial public meeting showcased precedent image boards that were discussed by the community members in attendance to determine likes and dislikes. The Design Team then took this input to develop two schematic design options (in plan view) and their associated site element precedent images and photomontages that were presented at the second and final public meeting held on April 29th. Community members were able to express their concerns and ideas for the two schematic design options as well as the proposed site element designs. This input was then discussed with Ridgway Chamber of Commerce members in order to develop a proposed design that fit the community goals expressed by public meeting attendees with the Chamber's budget goals for renovating Heritage Park and the Visitor Center. The design team used this input to create the final Preferred Master Plan Design Option and Long Term Option 2 shown on pages 12 - 15 of this document. Precedent images and photomontages of the proposed site elements found in the Preferred Master Plan design are featured starting on page 18 of this document.

The precedent image boards and meeting notes showcased at these public meetings can be seen in Appendix A of this document. The two schematic master plan designs can also be viewed in Appendix A.



Public Meeting Input: The images above show comments made during the Public Meeting held on March 28th. Meeting attendees were able to place green dots on images they liked and red dots on images they disliked.

PREFERRED MASTER PLAN DESIGN DESCRIPTION

The Preferred Site Plan uses site features reminiscent of Ridgway's history such as the car already present on site and new railroad ties to organize the park layout. Also, the site itself is more linear from East to West, which necessitates a more path-oriented design. As a result, the proposed design features several interweaving paths to guide users through the space. Key park features are listed in the bulleted list below; they are listed the order they progress through the site from East to West. Images of these features can be seen starting on page 18 of this document.

KEY PARK FEATURES

- A new Ridgway **Gateway Sign** is located near the Highway 550 and Sherman St. intersection in a demonstration xeric garden area with berms, bollards, and crusher fines pathways.
- A **Photo Opportunity Area** with ADA access is located on top of the existing railroad trestle; this photo area has the mountain range including Mount Sneffels in its backdrop. There is also a platform for the camera person taking the photo. Stone benches are included in a crusher fines plaza nearby.
- A series of **Containers Retrofitted for Visitor Center Information** are located along the railroad tie pathway and would feature the existing train car along with additional storage containers that have been retrofitted to include visitor information, seating, and interactive displays. There are several ornamental xeric planting areas in between the railroad ties located at either end of the containers.
- Lawn Spaces will be located along Sherman Street to provide some grassy areas in the park for locals and passers-by to enjoy.
- A **Planting Bed of Rabbitbrush, Sage, Wildflowers, and Ornamental Grasses** will act as a xeric buffer along the west side of the site along the Fairgrounds. This buffer will help stabilize the steep grades occurring in this area.
- **Themed Informational Signage** is also located along the railroad tie pathway in line with the retrofitted containers. An aspen tree grove would create a scenic backdrop for these signs. These signs feature the five themes that were developed to capture the unique attractions of the Ridgway area; the themes include: Arts and Entertainment, Culinary Experiences, Health and Wellness, Outdoor Adventure, and History and Heritage. The signage will match the aesthetics of other signs in place around town.
- Play areas in the park will include an iconic **Climbing Boulder** with safety surfacing for older children and adults and a **Tot Lot** with smaller natural climbing features such as stepping logs and smaller boulders.
- The existing **Visitor Center** building would remain in place for several years in order to bridge the gap between acquiring funding and needing something in the short-term to accommodate for visitors now. This building is plumbed for up to two restrooms and has one functioning restroom now. In the short-term, the Ridgway Chamber of Commerce is considering small renovation options to open the restroom up to the outside so that people could access the restroom even when volunteers aren't available to staff the visitor center.
- A large **Visitor Center Sign** featuring icons for other park amenities including the photo opportunity area and restrooms would draw people into the site and inform visitors of the park amenities available. Other park amenities include a picnic area and water fountain.
- In order to maximize parking, the unpaved gravel **Parking Lot** should have the spaces delineated in some way, whether by using seasonal painting of stripes in the summer or some other means. If parking was organized in this lot, there would be parking spaces for up to 39 vehicles, 5 motorcycles, and two trailers/RVs. Trees could be planted in the parking lot to aid in delineating spaces and to add shade and improve aesthetics. The Fairgrounds has also mentioned the option to accommodate some parking within the center of the track. The Town of Ridgway may have to annex a portion of this area within the fairgrounds to offer more spaces for the Park & Ride.
- The site furnishings used throughout Heritage Park would match the style of site furnishings used in Downtown Ridgway, such as the bollards, bike racks, and natural-toned benches.

*Another site element that was desired at the public meetings for Heritage Park was informational signage describing the Ute tribe's history and influence on the area. Such signage would require design input and approval from Ute tribal members prior to installation.

PREFERRED SITE PLAN

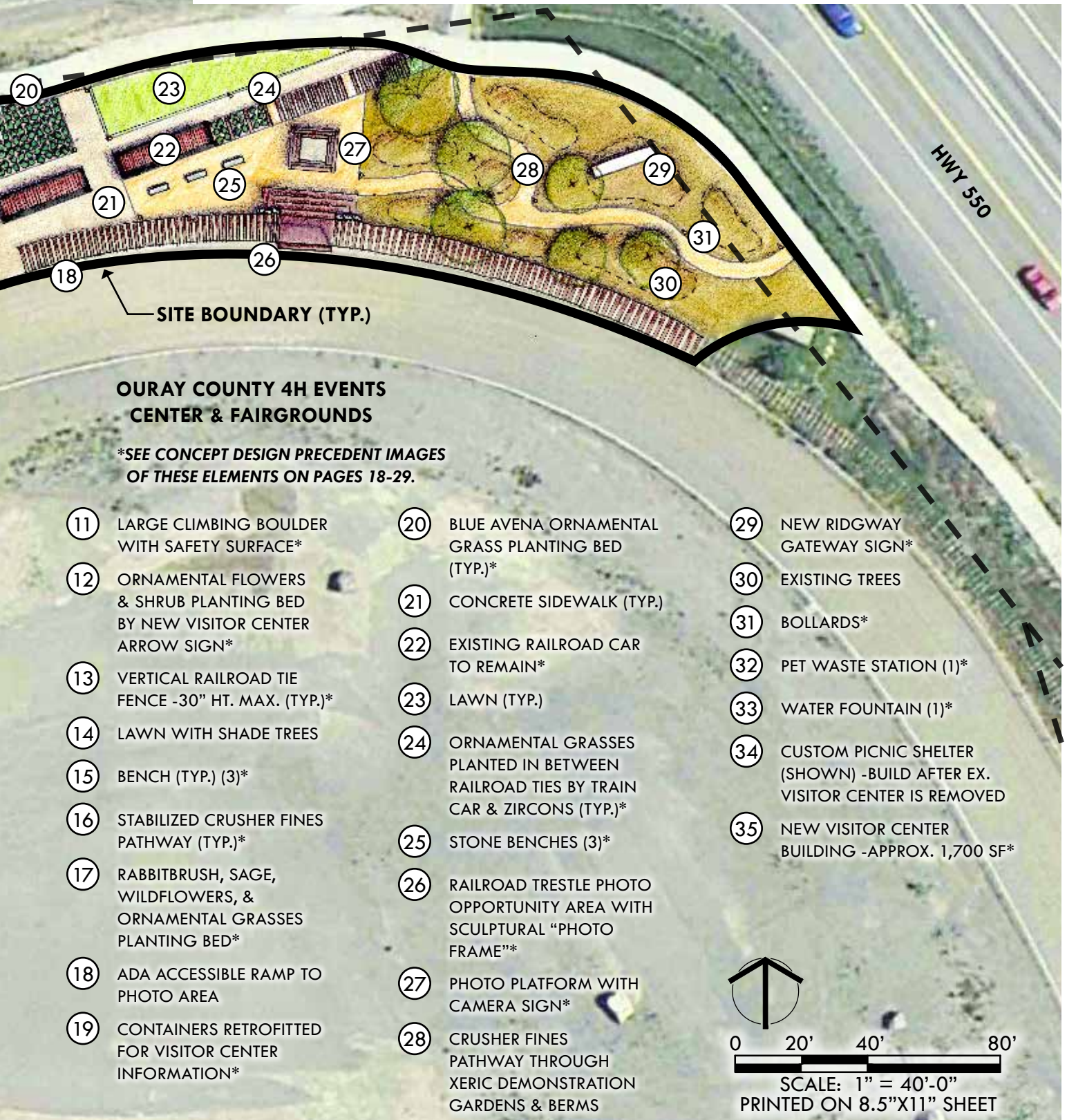




LONG TERM OPTION 2 - NEW VISITOR CENTER



Long Term Option 2 - New Visitor Center was presented at the April 29th public meeting. This option was well-liked by community members in attendance; they were favorable of a new Visitor Center building. (See additional information about this on page 17 of this document.) A precedent image of a visitor center building that was well-liked by public meeting attendees can be viewed on page 19. The cost estimate for this option can be seen on page 32.



PHASING & PRIORITIES

PHASING

The below list groups park elements based on importance of installation. Priorities or phasing may change as funding is acquired or as grants for various items become available. Initial site cleanup, creating accessible restrooms, and signage were some of the items that were identified as being key features needed in the short term. Other items that would add to the overall park experience—such as the climbing boulder area and other signage and plantings—would be phased in later as the funding and resources for those items becomes available. These items are explained in further detail with associated images starting on page 18 of this report.

PHASE 1 - HIGH PRIORITY

- Initial Site Cleanup; trim and remove vegetation
- Landscape and Irrigation along Highway 62/Sherman St. for initial site beautification
- Temporary signage on current Visitor Center Building; made to be movable as more permanent signage structures are installed
- Themed Informational Signs
- Photo Opportunity Area
- Parking Delineation in unpaved gravel parking lot
- Accessible Restrooms (ADA accessible and accessible from the building exterior for public use when there are no volunteers at the Visitor Center)
- New Gateway Sign

PHASE 2 - MEDIUM PRIORITY

- Demolition of old Visitor Center Building
- Install new Restroom & Picnic Area - includes new pergola/shade structure, tables, and trash/recycling receptacles
- Installation of New Visitor Center Kiosks (Retrofitted Containers) - includes any seating in the kiosks, water fountain, and informational signage and interactive displays in new kiosks. See precedent images on page 18.
- Install new Railroad Ties to create park layout framework
- Install pathways through site
- Install sod areas
- Visitor Center Sign with park amenity icons such as the restroom, picnic, and camera symbols

PHASE 3 - LOW PRIORITY

- Remove existing pergola and replace with Climbing Boulder & safety surfacing
- Nature Play-Themed Tot Lot play area
- Crusher fines plaza area and secondary crusher fines pathways
- Site Furnishings (bollards, benches and stone benches, bike racks, etc.)
- Xeric planting areas & demonstration gardens

A NEW VISITOR CENTER BUILDING (LONG TERM OPTION 2)

Another item that the public meeting attendees identified as a wish list item is the addition of a new Visitor Center building—see this option on pages 14 and 15. This is not included in the phasing list on page 16 and below because planning for a new community building would require additional long-term visioning, public process, and fundraising efforts before such an addition could be made to the site design. The desired Visitor Center, as expressed by community members, would feature local meeting space as well as visitor and museum information. The Chamber's vision of this new visitor center building is for a 1,700 SF building (proposed in Long Term Option 2 - New Visitor Center Building) that is a suitable fit for a low-staff visitor center building with bathrooms accessible from the outside. (Refer to page 19 for a precedent image of a visitor center structure that was well-liked at the public meetings held in Ridgway.) Due to budgetary and space constraints, we will need to find a compromise to fit the desires of community members that want a state-of-the-art building that can also be used as community space. (If the new visitor center were not built, new ADA accessible restrooms would still be constructed in this option.)

*If a more iconic and eye-catching building were desired, then the space constraints at Heritage Park would be prohibitive from locating this new Visitor Center building on the current park site. If funding was acquired to develop such a large-scale facility, then a more extensive space would need to be acquired by the Town of Ridgway at a similar high-visibility site location along primary access routes. More public process is needed to align on a design and plan for a new visitor center building.

PHASING DIAGRAM KEY

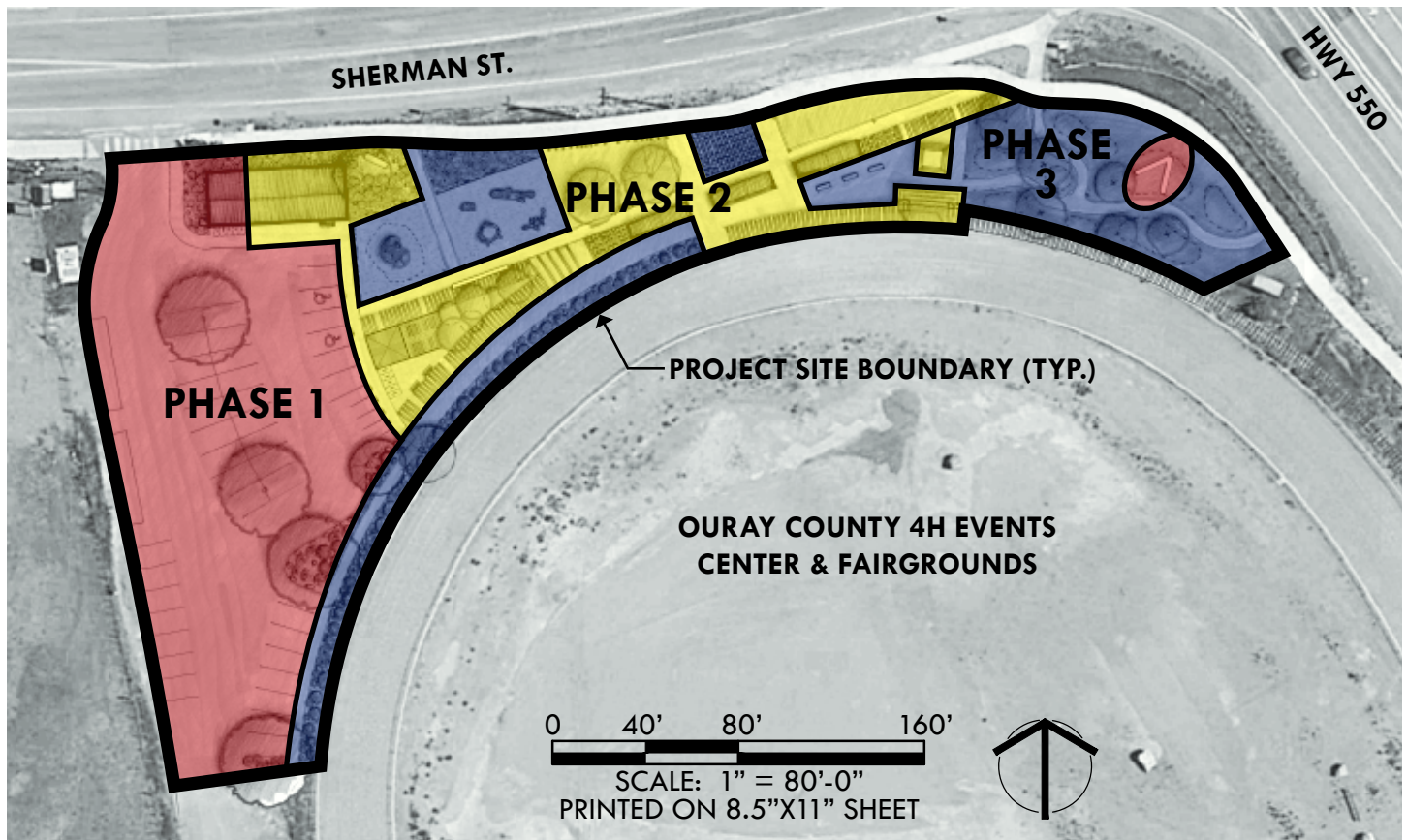
DESCRIPTION

PHASE 1/1ST PRIORITY

PHASE 2/2ND PRIORITY

PHASE 3/3RD PRIORITY

The Phasing Diagram is a graphic representation of the order in which the new design components of Heritage Park would be installed. The phasing order is based on the priorities shown on page 16 of this document that were determined with public input. Some items may be moved as funding is acquired or as community priorities change.



Phasing Diagram: The above diagram features the proposed implementation order of park elements. These elements can be interchangeable as funding is acquired or grants become available or as community priorities shift.

PROPOSED SITE ELEMENTS - PRECEDENTS

Precedent images and photomontages of the proposed site elements found in the Preferred Master Plan and the Long Term Option 2 - New Visitor Center designs are featured on pages 18-29 of this document. The numbers on these features relate to the numbers locations shown on the plan renderings on pages 12-15. Refer to the plan sheets for the proposed site locations of site elements.

NEW VISITOR CENTER KIOSK



19 CONTAINERS RETROFITTED FOR VISITOR CENTER INFORMATION

A series of containers would act as kiosks to serve as the new Visitor Center in the proposed design. These containers could be retrofitted to host seating, shade areas, informational signage, and interactive displays. They could function with or without staff.



19 INTERACTIVE DISPLAYS IN VISITOR CENTER

Interactive displays, such as this topographical map would be on display in the Visitor Center kiosks.



22 EXISTING RAILROAD CAR TO REMAIN

The Railroad Museum has offered to leave this car to supplement the Visitor Center storage container kiosks.

NEW VISITOR CENTER BUILDING



35 ALTERNATE: LONG TERM OPTION 2 - NEW VISITOR CENTER BUILDING

The above precedent images of existing visitors centers were shown on a precedent image board at the April 29th public meeting and were the most well-liked images by meeting attendees for the overall architectural style of the proposed structure. The New Visitor Center building would feature accessible restroom facilities. (If the new visitor center was not built, new ADA accessible restrooms would still be constructed in this option.)

ADAPTIVE REUSE OF EXISTING VISITOR CENTER

CONVERTED TO OPEN-AIR PERGOLA SLATS IN MIDDLE SECTION

One of the design ideas shown at the public meetings was to remodel the existing visitor center building to become an adaptive reuse restroom and picnic area structure. The concept for this adaptive reuse design is shown in the images adjacent and below on this page. The meeting attendees agreed that removing the structure and replacing it with information kiosks or a new visitor center building would be preferable to renovating the existing structure. However, the idea of creating a designated picnic area with shade was considered as important to feature in the Heritage Park master plan. The picnic area could have a slatted pergola-type roof or a full-coverage roof. Both of these options are shown below in the adaptive reuse sketches. A new picnic area structure would be constructed once the existing pergola is removed to make room for the large Climbing Boulder feature shown on page 25 of this document.

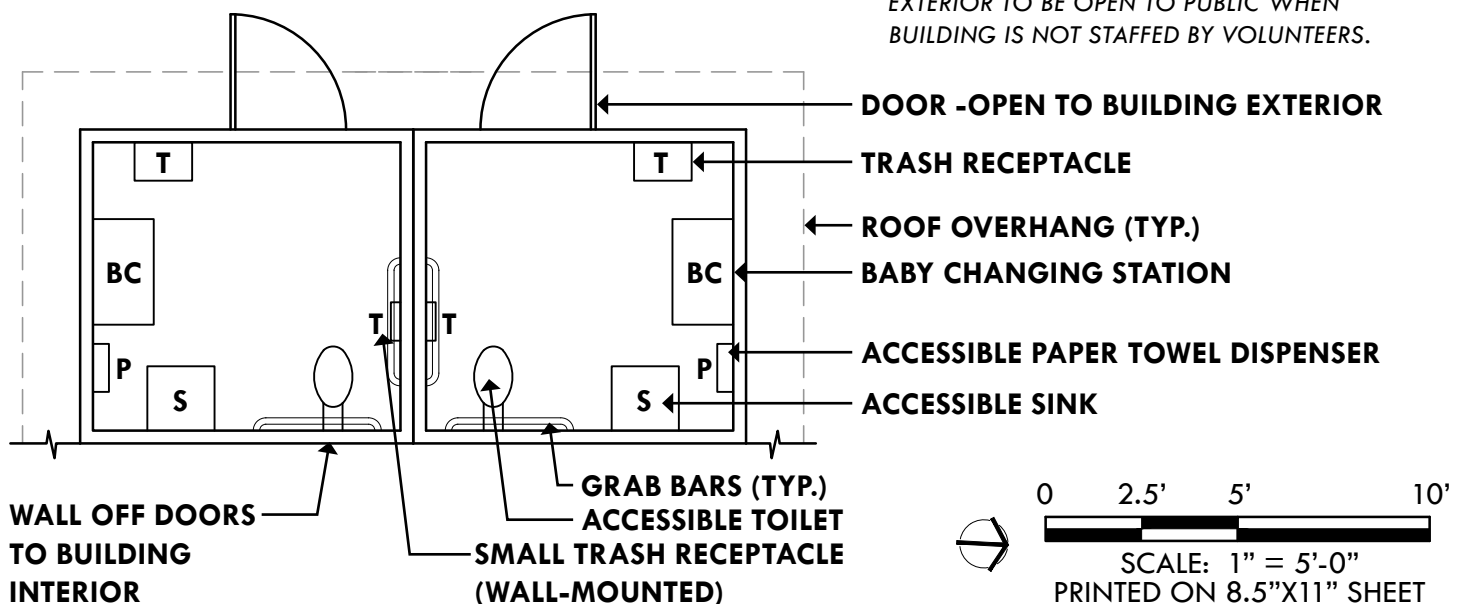


3D MODEL OF CONVERTED VISITOR CENTER



ADA ACCESSIBLE GENDER NEUTRAL RESTROOM PLAN

*NOTE: MAKE RESTROOMS ACCESSIBLE FROM EXTERIOR TO BE OPEN TO PUBLIC WHEN BUILDING IS NOT STAFFED BY VOLUNTEERS.



② ACCESSIBLE RESTROOMS - PLAN VIEW

The current Visitor Center building has a functioning restroom. However, this restroom is not ADA accessible, nor does it open to the exterior of the building. The above plan features a layout of two ADA accessible restrooms that could aid with the renovation of the current restroom as shown in the "Preferred Site Plan" option to improve accessibility.

SIGNAGE



10 THEMED INFORMATIONAL SIGNS

This sign, which is based off of the existing banner pole sign frame located near the Town Hall Community Center in Ridgway, features the (5) themes identified by the Chamber of Commerce as capturing the unique attractions of the Ridgway area. The themes include Arts & Entertainment, Culinary Experiences, Health & Wellness, Outdoor Adventure, and History and Heritage.



12 NEW VISITOR CENTER ARROW SIGN

This sign would be located near Sherman Street/Highway 62 and would feature "Visitor Information" text as well as park amenity icons (including parking, restroom, camera, playground, and picnic table symbols) to attract passers-by to stop at Heritage Park.



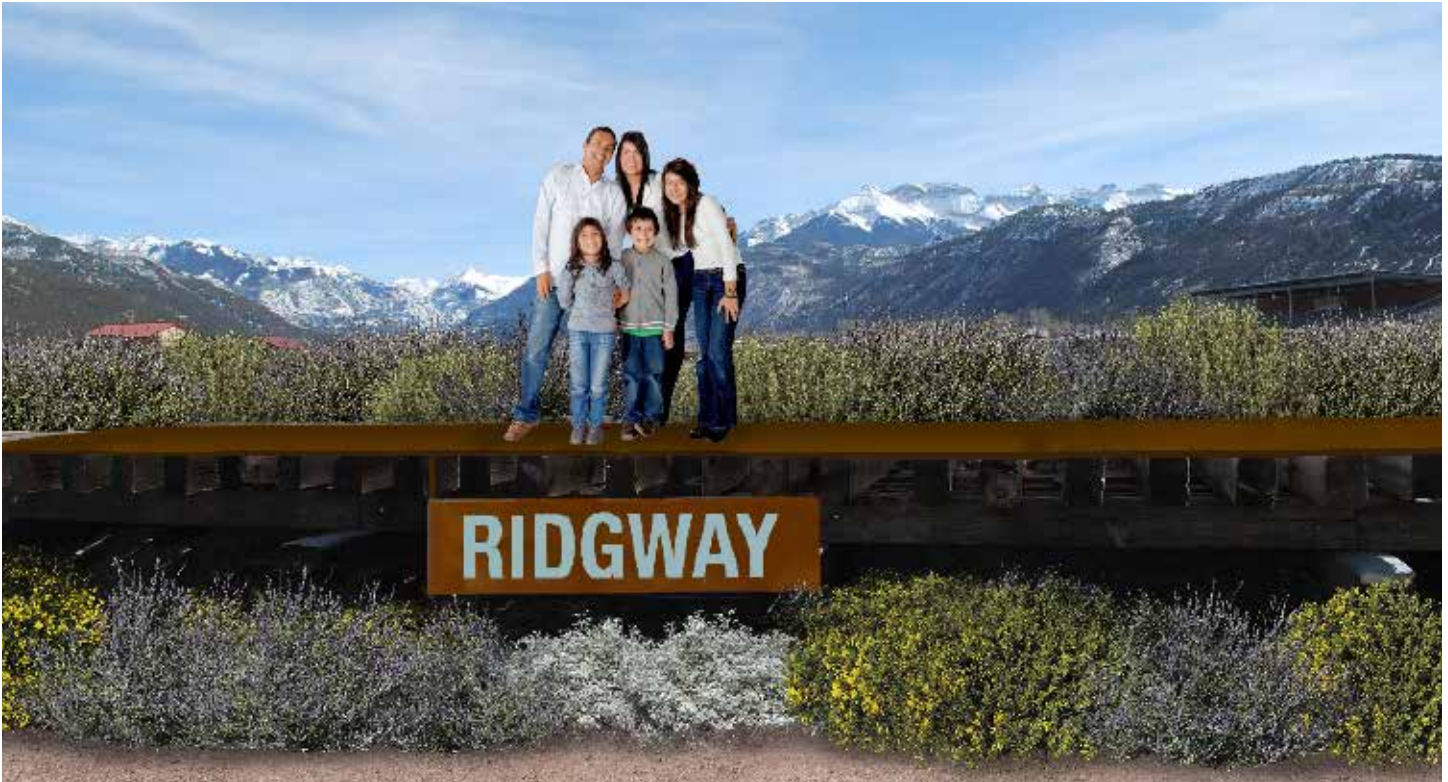
PLAN VIEW

Making an angled version of the Gateway Sign will allow for the ideal viewing angles to be used for traffic approaching from different directions.

29 NEW RIDGWAY GATEWAY SIGN

This sign would replace the current Gateway sign located near the Highway 550-Sherman St. intersection; it could be a simple front-back sign or triangular (see plan above). The sign would be approx. 20'-0"W x 10'-0"HT. with 30"HT. Ridgway letters.

PHOTO OPPORTUNITY AREA - OPTION 1



26 RAILROAD TRESTLE PHOTO OPPORTUNITY AREA

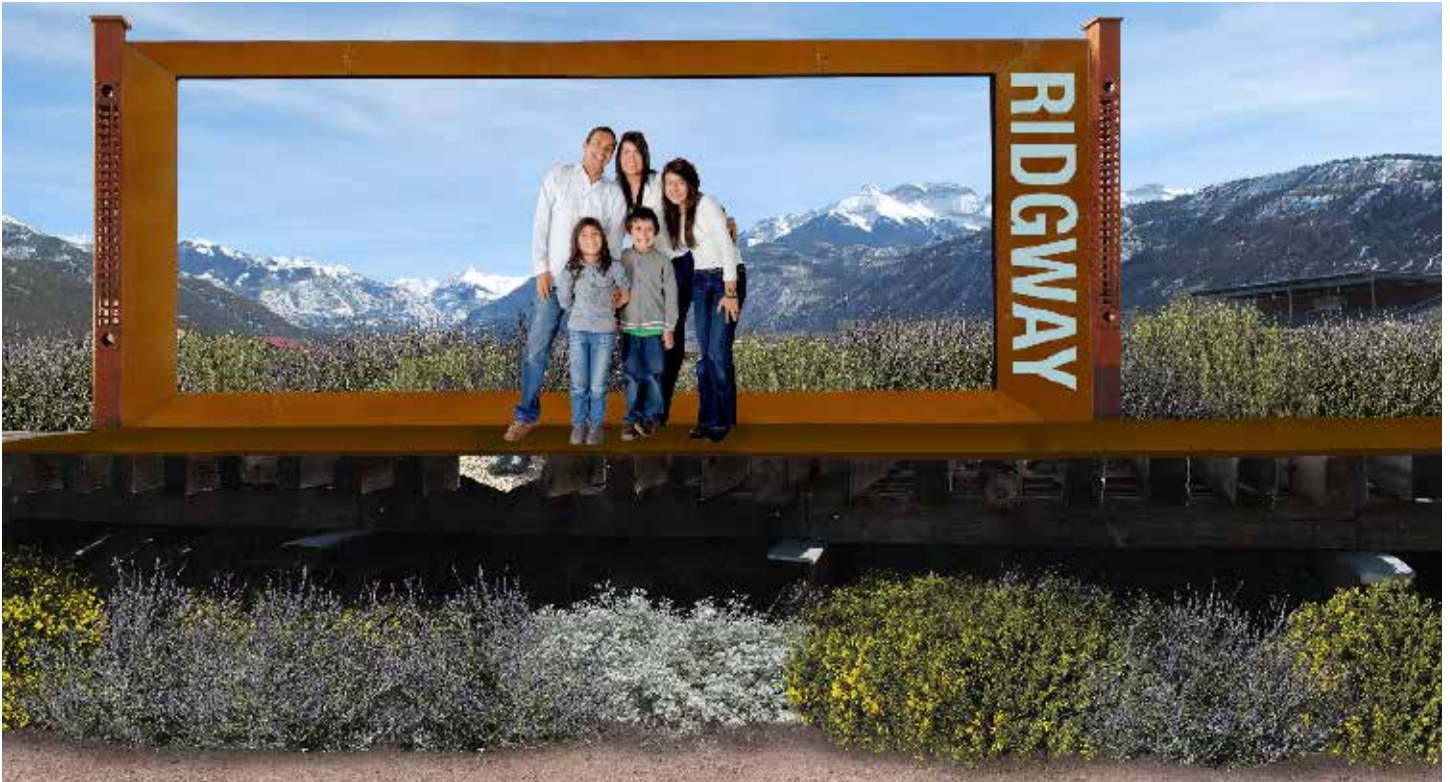
The existing trestle made of railroad ties near the northeast side of the fairgrounds in Heritage Park was identified as a great location for a photo opportunity with a mountain backdrop in the park. This frame-less option lets the background have the focus.



27 PHOTO PLATFORM & CAMERA SIGN

A raised platform will allow the person taking the photo to get a good angle of the scene. A photo symbol sign directs park users to the photo opportunity area—since without the frame outline it is less visible to passers-by.

PHOTO OPPORTUNITY AREA - OPTION 2



26 RAILROAD TRESTLE PHOTO OPPORTUNITY AREA - OPTION 2

Option 2 features a full frame for the photo opportunity and is large enough in scale to attract motorists from the road to stop and check out the park feature. This high visibility design would encourage increased usage of the Photo Opportunity Area.



27 PHOTO PLATFORM & CAMERA SIGN - OPTION 2

The framed option directs the camera person to center the image with a specific view of the background scenery; this makes it easier on the photographer to take a quick picture.

RAILROAD TIES



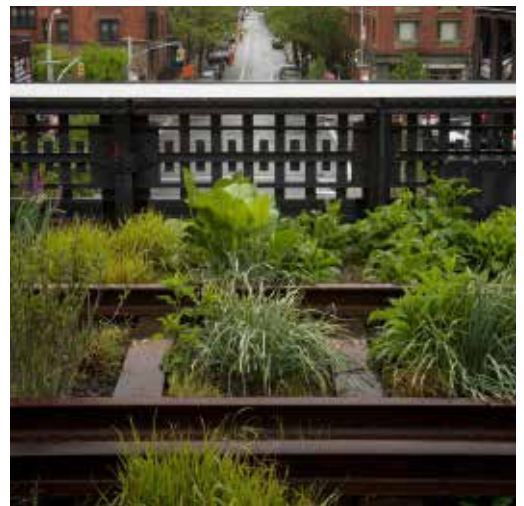
8 RAILROAD TIE PATHWAY IN CRUSHER FINES

In the proposed site design, new pressure-treated, non-toxic railroad ties would be acquired to form pathways through the site that are reminiscent of Ridgway's railroad history.



13 VERTICAL RAILROAD TIE FENCE -30" HT. MAX. (TYP.)

One potential idea for the park is to install some of the new railroad ties vertically to form a fence that creates a buffer between site features and Sherman Street.



24 ORNAMENTAL GRASSES PLANTED BETWEEN RAILROAD TIES

Planting between the railroad ties can also add visual interest to the preferred design's railroad tie pathways.

PLAY FEATURES - CLIMBING BOULDER



11 LARGE CLIMBING BOULDER PLAY FEATURE

A large climbing boulder feature was identified in the public meetings as a key site element that would be useful to both residents and park visitors. The boulder should match the local rock formation aesthetic in terms of colors and shapes.

PLAY FEATURES - TOT LOT



⑨ NATURE-THEMED PLAY AREA (TOT LOT)

The Tot Lot play area would be natural in its appearance to match the Large Boulder play feature. A series of smaller boulders, logs, and stumps can be used to create this look. Public meeting attendees expressed a desire to see “no plastic play equipment.”

SITE FURNISHINGS & PLANTING ELEMENTS



3 BIKE RACKS

Bike racks, matching those in Downtown, are utilized in the proposed design to encourage bike use and parking.



15 BENCHES

Park benches would match those in Downtown. Meeting attendees expressed concern with hot metal benches.



16 STABILIZED CRUSHER FINES PATHWAY

Stabilized crusher fines is ADA accessible and will be utilized in pathways throughout the site and in a small plaza area with stone slab benches.



17 RABBITBRUSH, SAGE, WILDFLOWERS, & ORNAMENTAL GRASSES PLANTING BED

These plantings are xeric and would act as a buffer between Heritage Park and the Fairgrounds.



20 BLUE AVENA ORNAMENTAL GRASS PLANTING BED

Blue avena grass is xeric and only grows to an 18" height. These plants will be incorporated near the retrofitted containers to emphasize their importance in a subtle way.



25 STONE BENCH

Stone benches would be located in the crusher fines plaza by the photo opportunity area and the retrofitted container kiosks. They are natural in appearance and would complement the style and aesthetic of the park.

SITE FURNISHINGS CONTINUED...



31 BOLLARDS

Light bollards are incorporated along pathways in the preferred design plan to improve park safety; they would match those found throughout Downtown. By keeping site furnishings in a similar look with Downtown, the whole Town will feel more connected.



Pet Waste Station & Dog Etiquette Sign Information:

Dogipot features a range of pet waste station items and offers an entire pet station including a pet waste bag dispenser, a trash receptacle, and a directional sign.

The sign enlargements feature different graphic options for asking pet owners to clean up. The green sign is from SafetySign.com and the white sign is from ComplianceSigns.com. Such signs encourage pet owners to be responsible on the Town's park property.

32 PET WASTE STATION



Water Fountain Information:

The provision of a water fountain was identified at the public meetings as an important site feature to include in the preferred site plan design. Both of these Elkay fountain options include an ADA accessible drinking fountain and dog bowl. The left most water fountain is from Restroom Direct.com. The right water fountain also includes a bottle-filling station and is from PlumbersStock.com.

33 WATER FOUNTAIN

COST ESTIMATES

PRICES MAY ESCALATE WITH THE PASSAGE OF TIME

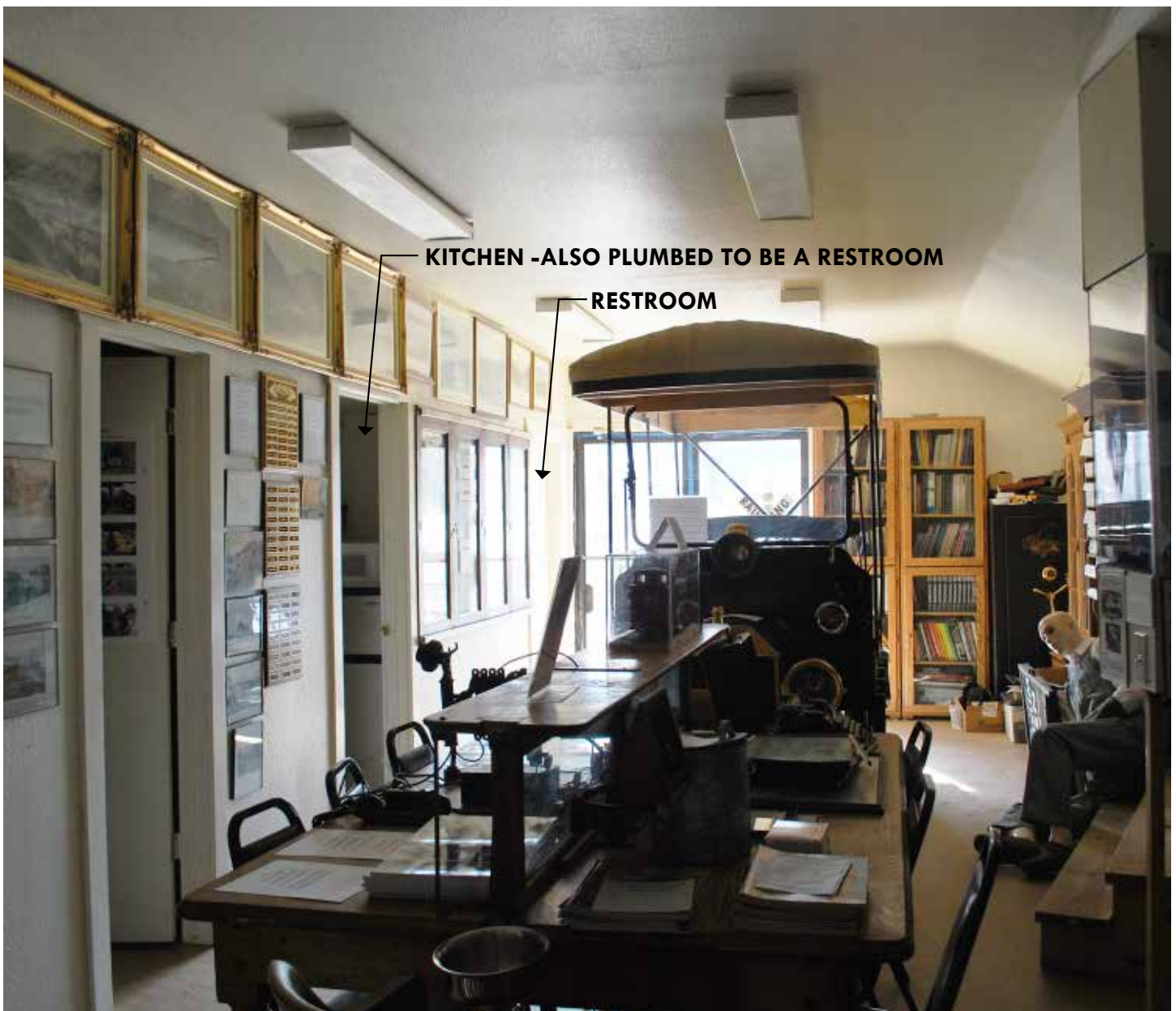
The cost estimate shown on page 32 represents the design team's educated "best guess" prices of the proposed design elements featured on the Preferred Site Plan. (There is also a preliminary cost estimate for the "Long Term Option 2 - New Visitor Center" design shown on page 33 of this document.) These prices are based off of recent construction bids on current projects, supplier prices, and estimates from past site design projects. Prices represent the cost of building these park features in 2019. Assume an average 3.5% escalation annually from current total depending on the date of construction. Also, there may be a bump up in materials costs, such as the recent increase in steel prices, that cannot be predicted; factors such as this may increase the project costs as well.



Existing Site Photo: This photograph shows the railroad ties that are present at Heritage Park, a small pergola, and the parking lot and Visitor Center building in the background.

ACCESSIBLE RESTROOM

Both designs feature ADA accessible restrooms. The cost estimate for the Preferred Site plan features a renovated restroom cost for the existing visitor center building of approximately \$30,000. The cost of an accessible restroom in the Long Term Option 2 is included in the overall cost of the new visitor center building. (It would be approximately \$35,000 to \$43,000 of the total cost of the new building, which is listed as approximately \$595,000 in the cost estimate.) Depending on funding and decisions by the Town of Ridgway and community members, one option or the other may be selected. Should funding be acquired to enable the Long Term Option 2 plan be installed sooner, renovating the existing restrooms may not be needed.



Existing Restroom: This photograph shows the interior of the existing Ridgway Railroad Museum building. The restroom is currently not ADA accessible and is not open to the building exterior; therefore, volunteers must be staffing the building for it to be open to the public.

PREFERRED SITE PLAN - COST ESTIMATE

Ridgway Heritage Park & Visitor Center				
Preliminary Cost Estimate - Preferred Option				
Prepared by DHM Design in May 2019				
Item	Quantity	Units	Cost	Total
Site Furnishings				
Picnic Tables - Type 1 (ADA)	1	EA	\$ 3,000.00	\$ 3,000.00
Picnic Tables - Type 2	3	EA	\$ 3,000.00	\$ 9,000.00
Benches	7	EA	\$ 2,360.00	\$ 16,520.00
Bike Racks	10	EA	\$ 200.00	\$ 2,000.00
Trash/Recycling Receptacles	2	EA	\$ 1,305.00	\$ 2,610.00
Water Fountain	1	EA	\$ 5,000.00	\$ 5,000.00
Dog/Pot Pet Waste Station	1	EA	\$ 330.00	\$ 330.00
			Subtotal	\$ 38,460.00
Playground				
Playground Boulder (Large)	1	LS	\$ 75,000.00	\$ 75,000.00
Playground Boulder (Small)	1	LS	\$ 10,000.00	\$ 10,000.00
Hollow Log (ID Sculpture)	1	EA	\$ 5,665.00	\$ 5,665.00
Balance Log (ID Sculpture)	1	EA	\$ 4,356.00	\$ 4,356.00
Charlotte's Web (ID Sculpture)	1	EA	\$ 16,390.00	\$ 16,390.00
Staggered Stumps	1	EA	\$ 4,831.00	\$ 4,831.00
Playground Thickened Edge	280	LF	\$ 20.00	\$ 5,600.00
Engineered Wood Fiber Safety Surfacing	2,500	SF	\$ 5.00	\$ 12,500.00
			Subtotal	\$ 134,342.00
Hardscape/Site Work				
Clearing and Grubbing	1	LS	\$ 15,000.00	\$ 15,000.00
Concrete Sidewalk	5,165	SF	\$ 8.00	\$ 41,320.00
Stabilized Crusher Fines	5,340	SF	\$ 5.00	\$ 26,700.00
Concrete Mow Edge	190	LF	\$ 15.00	\$ 2,850.00
Steel Edger	100	LF	\$ 3.50	\$ 350.00
Railroad Ties (new, pressure-treated)	300	EA	\$ 60.00	\$ 18,000.00
Railroad Trestle Feature	1	LS	\$ 20,000.00	\$ 20,000.00
Landscape Boulders (to edge parking lot)	15	EA	\$ 100.00	\$ 1,500.00
Earthwork	1	LS	\$ 12,000.00	\$ 12,000.00
Lighting and Electrical	1	LS	\$ 25,000.00	\$ 25,000.00
			Subtotal	\$ 162,720.00
Planting				
Deciduous Trees (10 gallon)	12	EA	\$ 250.00	\$ 3,000.00
Shrubs (5 gal.)	60	EA	\$ 50.00	\$ 3,000.00
Ornamental Grasses (1 gal.)	125	EA	\$ 15.00	\$ 1,875.00
Sod	3,000	SF	\$ 1.00	\$ 3,000.00
Native Grass	500	SF	\$ 0.20	\$ 100.00
Shrub & Perennial Planting Beds (1 gal)	300	EA	\$ 15.00	\$ 4,500.00
Cedar Bark Mulch	15.5	CY	\$ 100.00	\$ 1,550.00
Topsoil (6" for Turf)	55	CY	\$ 35.00	\$ 1,925.00
Topsoil (4" for Seeded Areas)	4	CY	\$ 35.00	\$ 140.00
Soil Amendment (4 CY/1000 SF in sod areas)	12	CY	\$ 70.00	\$ 840.00
Soil Amendment (1 CY/1000 SF in shrub bed areas)	4	CY	\$ 70.00	\$ 280.00
Irrigation	1	LS	\$ 10,000.00	\$ 10,000.00
			Subtotal	\$ 30,210.00
Signage				
Photo Area	1	LS	\$ 15,000.00	\$ 15,000.00
Gateway Sign	1	LS	\$ 75,000.00	\$ 75,000.00
Themed Signs	5	EA	\$ 12,000.00	\$ 60,000.00
Arrow Sign	1	EA	\$ 15,000.00	\$ 15,000.00
Historic Map	1	EA	\$ 2,000.00	\$ 2,000.00
ADA Parking Signs	2	EA	\$ 250.00	\$ 500.00
Interpretive Signage/Exhibits (allowance)	1	LS	\$ 15,000.00	\$ 15,000.00
			Subtotal	\$ 182,500.00
Structures				
Retrofit Old Visitor Center Building (Accessible Restrooms)	150	SF	\$ 200.00	\$ 30,000.00
Visitor Center Kiosk (Container)	1	LS	\$ 50,000.00	\$ 50,000.00
Secondary Kiosk	1	LS	\$ 50,000.00	\$ 50,000.00
			Subtotal	\$ 130,000.00
			Subtotal	\$ 678,232.00
			Design and Construction Documents	\$ 67,823.20
			Total	\$ 746,055.20
Assumptions:				
Gravel parking area will be regraded and maintained by City as needed.				
Xeriscape garden would be phase in by volunteers.				
Could do signage on current building in short term, and move to freestanding steel structure in future.				

LONG TERM OPTION 2 - COST ESTIMATE

Ridgway Heritage Park & Visitor Center Preliminary Cost Estimate - Long Term Option 2 (New Visitor Center) Prepared by DHM Design in May 2019				
Item	Quantity	Units	Cost	Total
Site Furnishings				
Picnic Tables - Type 1 (ADA)	2	EA	\$ 3,000.00	\$ 6,000.00
Picnic Tables - Type 2	4	EA	\$ 3,000.00	\$ 12,000.00
Benches	6	EA	\$ 2,360.00	\$ 14,160.00
Bike Racks	6	EA	\$ 200.00	\$ 1,200.00
Trash/Recycling Receptacles	2	EA	\$ 1,305.00	\$ 2,610.00
Dog Pot Pet Waste Station	1	EA	\$ 330.00	\$ 330.00
			Subtotal	\$ 36,300.00
Playground				
Playground Boulder (Large)	1	LS	\$ 75,000.00	\$ 75,000.00
Playground Boulder (Small)	1	LS	\$ 10,000.00	\$ 10,000.00
Hollow Log (ID Sculpture)	1	EA	\$ 5,665.00	\$ 5,665.00
Balance Log (ID Sculpture)	1	EA	\$ 4,356.00	\$ 4,356.00
Charlotte's Web (ID Sculpture)	1	EA	\$ 16,390.00	\$ 16,390.00
Staggered Stumps	1	EA	\$ 4,831.00	\$ 4,831.00
Playground Thickened Edge	280	LF	\$ 20.00	\$ 5,600.00
Engineered Wood Fiber Safety Surfacing	2,500	SF	\$ 5.00	\$ 12,500.00
			Subtotal	\$ 134,342.00
Hardscape/Site Work				
Clearing and Grubbing	1	LS	\$ 15,000.00	\$ 15,000.00
Concrete Sidewalk	5,165	SF	\$ 8.00	\$ 41,320.00
Stabilized Crusher Fines	5,340	SF	\$ 5.00	\$ 26,700.00
Concrete Mow Edge	190	LF	\$ 15.00	\$ 2,850.00
Steel Edger	100	LF	\$ 3.50	\$ 350.00
Railroad Ties (new, pressure-treated)	300	EA	\$ 60.00	\$ 18,000.00
Railroad Trestle Feature	1	LS	\$ 20,000.00	\$ 20,000.00
Landscape Boulders (to edge parking lot)	15	EA	\$ 100.00	\$ 1,500.00
Earthwork	1	LS	\$ 12,000.00	\$ 12,000.00
Lighting and Electrical	1	LS	\$ 25,000.00	\$ 25,000.00
			Subtotal	\$ 162,720.00
Planting				
Deciduous Trees (10 gallon)	12	EA	\$ 250.00	\$ 3,000.00
Shrubs (5 gal.)	60	EA	\$ 50.00	\$ 3,000.00
Ornamental Grasses (1 gal.)	125	EA	\$ 15.00	\$ 1,875.00
Sod	3,000	SF	\$ 1.00	\$ 3,000.00
Native Grass	500	SF	\$ 0.20	\$ 100.00
Shrub & Perennial Planting Beds (1 gal)	300	EA	\$ 15.00	\$ 4,500.00
Cedar Bark Mulch	15.5	CY	\$ 100.00	\$ 1,550.00
Topsoil (6" for Turf)	55	CY	\$ 35.00	\$ 1,925.00
Topsoil (4" for Seeded Areas)	4	CY	\$ 35.00	\$ 140.00
Soil Amendment (4 CY/1000 SF in sod areas)	12	CY	\$ 70.00	\$ 840.00
Soil Amendment (1 CY/1000 SF in shrub bed areas)	4	CY	\$ 70.00	\$ 280.00
Irrigation	1	LS	\$ 10,000.00	\$ 10,000.00
			Subtotal	\$ 30,210.00
Signage				
Photo Area	1	LS	\$ 15,000.00	\$ 15,000.00
Gateway Sign	1	LS	\$ 75,000.00	\$ 75,000.00
Themed Signs	5	EA	\$ 12,000.00	\$ 60,000.00
Arrow Sign	1	EA	\$ 15,000.00	\$ 15,000.00
Historic Map	1	EA	\$ 2,000.00	\$ 2,000.00
ADA Parking Signs	2	EA	\$ 250.00	\$ 500.00
Interpretive Signage/Exhibits (allowance)	1	LS	\$ 15,000.00	\$ 15,000.00
			Subtotal	\$ 182,500.00
Structures				
Retrofit Old Visitor Center Building (Shade Shelter)	1	LS	\$ 20,000.00	\$ 20,000.00
New Visitor Center Building	1,550	SF	\$ 350.00	\$ 542,500.00
New Accessible Restrooms	150	SF	\$ 350.00	\$ 52,500.00
			Subtotal	\$ 562,500.00
			Subtotal	\$ 1,108,572.00
			Design and Construction Documents	\$ 110,857.20
			Total	\$ 1,219,429.20
Assumptions:				
Gravel parking area will be regraded and maintained by City as needed.				
Xeriscape garden would be phase in by volunteers.				
Could do signage on current building in short term, and move to freestanding steel structure in future.				

FUNDING OPTIONS

POTENTIAL FUNDING SOURCES

The below list describes several different sources of funding that could help in developing the Preferred Site Plan design for Heritage Park. These options do not list every funding or grant option available. For example, some playground supplier companies, such as KaBOOM! or BCI Burke, or businesses, like Home Depot, offer grants, discounts, or supplies to help with project developments at parks. Some groups, such as Boy Scouts of America, help with constructing small projects. In short, there are numerous options in terms of receiving financial, labor and /or materials assistance to build park projects. The funding that the Town of Ridgway is able to acquire may adjust park priorities and enable different amenities to be developed before others. (See more information on the initial Phasing and Priorities for Heritage Park on page 16 of this document.) Additional grant information can be found on the next page.

- **Grants** - see lists below and on next page
- **Local Appropriations** - Town and County revenues/budgets
- **Creation of a Designated Fund** - special taxes, typically a sales tax increase at the county level which is dedicated to open space, trails, and parks development
- **Individual, Corporate, and Philanthropic Giving** - gifts, grants, bequests, fundraising events, and other forms of giving
- **In-Kind Volunteerism** - public agencies or private participants both in land donations and possibly use of equipment, labor, or materials



Sign in Heritage Park: A sign near the Visitor Center at Heritage Park features local humor.

GRANT FUNDING SOURCES

COLORADO GRANT PROGRAMS

- BEST Grant Program
- Colorado Brownfields Foundation
- Colorado Department of Local Affairs
- Colorado Department of Public Health and Environment
- Colorado Health Foundation
- Colorado Office of Economic Development
- Corporate Programs
- Department of Transportation
- Great Outdoors Colorado
- History Colorado
- Private Foundations

NATIONAL GRANT PROGRAMS

- Department of Commerce Economic Development Administration
- Federal Transit Administration
- National Endowment for the Arts
- National Energy Technology Laboratory
- National Inclusion Project
- National Institute of Health
- National Science Foundation
- Rural Business Enterprise Grants
- Rural Community Assistance Corporation
- The Daniels Fund

FUNDABLE PROJECT ELEMENTS

- Recreation
- Interpretation
- Education
- Restoration
- Public Access
- Specialized programming (biking, trails, etc.)
- Energy efficiency
- Public art
- Public transportation

ELIGIBLE LOCAL PROJECTS

- Playgrounds
- Trails within local parks
- Environmental education facilities
- Outdoor amenities located at fairgrounds
- Infrastructure (irrigation, sprinkler systems, drainage pipes, parking lots, lighting)
- Amenities (restrooms, drinking fountains, benches, picnic tables, pavilions, etc.)

DOLA FINANCIAL ASSISTANCE PROGRAMS

- Colorado Main Street
- Community Development Block Grant
- Rural Economic Development Initiative

APPENDIX

PUBLIC MEETING 1 (MARCH 28TH, 2019) - PRECEDENT IMAGE BOARDS



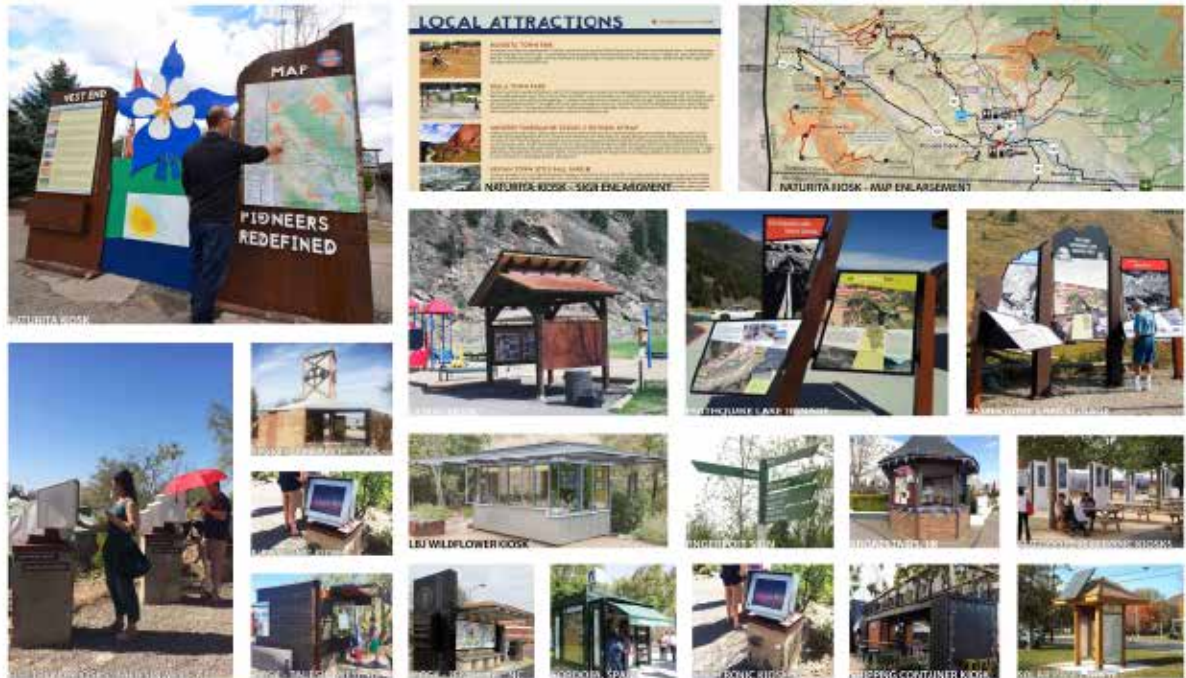
Precedent Images - Visitor Center

Strategic Plan for Ridgway Visitor Center and Heritage Park | Public Meeting | 3.28.19



Precedent Images - Landmarks

Strategic Plan for Ridgway Visitor Center and Heritage Park | Public Meeting | 3.28.19



Precedent Images - Informational Signage

Strategic Plan for Ridgway Visitor Center and Heritage Park | Public Meeting | 3.28.19



Precedent Images - Play Structures

Strategic Plan for Ridgway Visitor Center and Heritage Park | Public Meeting | 3.28.19

PUBLIC MEETING 1 -NOTES

PUBLIC MEETING 1 (MARCH 28TH, 2019) - NOTES FROM PUBLIC MEETING

Ridgway Heritage Park & Visitor Center
Thursday 3-28-2019 1st Public Meeting
Ridgway, CO

DHM Meeting Attendees
Walker Christensen
Cammie Willis

DURING PRESENTATION NOTES

General Site Information

- Gateway location of Heritage Park makes it key location
- Need ADA access
- Vehicles/Parking/Etc.
 - o Access from the Hwy is a great distance from the Hwy
 - o Road at Visitor Center entry is called Race Course Road
 - o Currently about 20-22 cars were parked at the Visitor Center for the park and ride share program
 - o At certain times of day, traffic is backed up in the park
- Existing Vegetation
 - o Random trees are blocking signs
 - o Some trees may be able to be transplanted
- Existing entry sign is small from vehicle perspective
 - o Features old slogan “Gateway to the San Juans”; Ridgway’s new tag line has been re-branded
 - o Ex. sign is too dark; not a good eye-catching hwy sign
 - o Rusty steel of sign blends into surrounding landscape
- Visitor Center is approx. 7’-0” ht. from building to roof height
 - o Building was converted from an old Fairgrounds hog barn
 - o Railroad museum to be in Visitor Center through 2020; think about transitioning chamber in as Railroad museum moves out
 - o Any phasing can be done while the Visitor Center building is operational?
 - o Year-round public restrooms would be great

Phasing

- Phasing may be utilized; Why creation of master plan is important
- Priorities will be determined from input at this meeting and presented at next public meeting for discussion
 - o Proposed plan created from input in this meeting will also be presented at next meeting for discussion
 - o Will determine both short & long-term items

General Community Resources

- Potential resources available for use in the park
 - o Railroad museum car can remain longterm if so desired by the Chamber
 - o Can stay or leave; adding signage on the car to advertise the railroad museum would create a symbiotic relationship
 - o If we want the Railroad ties from the museum; they will leave for reuse
- Railroad Museum Rep. said that there are 200-300 usable landscape ties in good condition
- Anything Chamber doesn’t want; let Railroad museum know so they can remove

Precedent Comments

- Jackson Hole’s Visitor Center is opened up in the morning; remains unstaffed; and is locked at night
- Shipping containers seemed to get lots of approval from meeting attendees
- How Heritage park designs play off of existing Ridgway structures?
- Meeting attendees liked Glu-lam wood climbing structure playground in slideshow
- No fenced dog park in Ridgway; residents would like this
 - o Heritage Park is too small for formalized Dog Park
 - o Who will clean up the dog park?

GROUP COMMENTS AT END OF PRESENTATION (from sticky notes)

Visitor Center

- Building a New Visitor Center
 - o Tear down hog barn building; start new
 - o Current location is not the best
 - o Better location would be where train was
 - o Raise up more so is more visible
 - o Would like shaded porches on the East and South sides (wraparound)
- Where tourists can sit
 - o Moving Visitor Center would eliminate shade on sidewalk
 - o Make the play area connected to the Visitor Center so that the children can play and the parents can watch and drink beverages
- Want clean bathrooms
- Friendly space
- Incorporate signage in all features
- Interactive/interpretive signs
 - o Incorporate exhibit space for local artists and artisans
 - o Existing building has two restrooms now
 - o Would new building be cheaper?
 - o Railroad Car/Steel shipping containers precedents are a good idea
 - o Like indoor/outdoor precedents
- Renovating Existing Visitor Center
 - o Tear open the building; can function as an open-air pergola
 - o 1/3 of building should be accessible year round (including restrooms)
 - o Not current electric & plumbing codes in building (20 years old utilities)

Shade Structures

- Shade Structures
 - o Match other structures in town (cohesive)
 - o County has steel slats (match this)
 - o This is at the Fairgrounds pergola; if matches, then fairgrounds may help fund
 - o Part pergola/part completely covered
 - o Everyone wants shade
 - o Shade slats simplicity
- Shade Sail

PUBLIC MEETING 1 -NOTES CONTINUED...

PUBLIC MEETING 1 (MARCH 28TH, 2019) - NOTES FROM PUBLIC MEETING CONTINUED...

- o Filtered shade
- o Cheaper than pergola
- Park Design
 - Match Residents' & Visitors' interests in the park=project goal
 - Park Entrance location is okay
 - Metal benches are too hot
 - Programming
 - o Modified public market concept
 - o Space for farmers market; all other days when not in the park (May to October activation)
 - Pathways
 - o Pull the walk in off of the highway
 - o Create a pathway into the fairgrounds
 - o Linkages between the Visitor Center and Fairgrounds are good to emphasize
 - o Install timeline walk from hwy 550 to west; historical and geological; creative district; earth formation
 - Up and Down-valley Connectivity
 - o Shared e-bike rental program
 - o Shared visitor services
 - Staff and volunteer training (& staffing pending IGA)
 - Landscaping
 - o Demonstration gardens
 - o Xeriscaping
 - Visibility
 - o Railroad is the current draw for people stopping at the Visitor Center (40%-60% of people stop for the railroad structures when whole train was there)
 - o Sight lines of new kiosk and playground should be considered to draw people in
 - o Visibility from car (sculpture & illumination) to catch the attention of passers-by
 - o Big retro arrow sign (or something to create same effect) that draws people in
 - o Signs to get out of car
 - o People stop at Taco del Gnar; cool building draws people in
 - o Lowlands sign has blue behind to make the rusty steel text of the sign pop out; Johnny Low
 - o Ouray County has visible impact corridor
 - Certain colors are allowed
 - Certain lighting is allowed
 - Signage
 - o Configurations of signs and playground equipment will get people to stop
 - o Volunteers are split between the Visitor Center and the museum now that these entities will be split into two locations
 - Outdoor self-guided information is important
 - Update the Visitor Center experience with technology (to inspire the new generation)
 - Technology would function year-round
 - Need to cater to both generations
 - People bring technology with them; QR codes work
 - Phones don't answer questions or have restrooms

- Technology to link to physical signs
 - o Series of structures (along walking pathway)
- Information along a path; motion-sensing heaters by the kiosks
- Would wildlife use this?
- At least use by main kiosk
 - o Would like a series of kiosks in high visibility locations (Heritage Park is one of them); would create uniformity throughout town
- Mountain Market kiosk location?
- o Kiosks are not handy in bad weather
- People are coming to Ridgway to be outside; they don't mind the elements
 - o Show Ridgway topography & names of mountains on signs
 - o Some interpretive signs like topography model at Jackson Hole Visitor Center
 - o Can make a family of signs and kiosks like the banner poles already constructed in Ridgway
- Tie buildings & signs into each other like Victor did
- Play Area
 - Climbing Boulders
 - o Plans are in the works for 1 in Ouray; could create cohesive link between communities if one is installed in Ridgway too
 - o Climbing community would help to maintain boulder
 - Like trampoline in slide
 - Natural playground; not plastic
 - Hot metal play structures=not desirable
 - Still need some smaller playground equipment for small children
 - Dog area=yes

Comments emailed from two stakeholders (Ouray City Council and Great Old Broads for Wilderness)

VC Building -

- Please see the website for the Squamish B.C. Adventure Center. The building design is welcoming and accommodates both tourists and community members. The visitor services, public bathrooms, and oversized parking ease the burden from Main Street. The office space, community room and rideshare parking are helpful to the local community. In general, a multi-use space is a must.

<http://www.exploresquamish.com/about-squamish/the-squamish-adventure-centre>

- Rack area with resources re: businesses/restaurants/lodging; alley poems with map; art sites around town with map; river walk; etc.
- Possible area that features Indigenous knowledge/culture again with consultation of Tribes.
- Large map (or if \$ allows, a relief map) of hiking, biking trails with color coded difficulty levels. Associated with information regarding Leave No Trace
- An art gallery/gift shop of local Ridgway/Ouray County artists
- Books related to the history, ecology, geology of the area for purchase
- A place to rest and of course restrooms and water fountain with filter option for bottles.

Heritage Park

- Ample parking for large vehicles, trailers

PUBLIC MEETING 1 -NOTES CONTINUED...

PUBLIC MEETING 1 (MARCH 28TH, 2019) - NOTES FROM PUBLIC MEETING CONTINUED...

- Rideshare parking for locals
- Bicycle parking
- Picnic zone
- Pet walk
- Info kiosks
- Playground for young and old (boulder)
- Trailhead for bike path connecting Ridgway to Ouray.
- Public bathroom access from sunup to sundown
- A timeline “walk” starting with earth’s beginning/geology and ending with creative district (perhaps.) There’s one of these at the national park? monument in Florissant and the experience was AMAZING.
- A park with shaded seating/picnic area and playground. Perhaps a vegetable/herb/flower garden.
- Possibly a significant “art installation”
- Perhaps a tribute (not sure what form this might take) to the Indigenous people who lived in and migrated through the Uncompahgre Valley. This possible fixture/feature would be decided upon jointly by Indigenous people/leaders/government and Ridgway Town and/or Chamber.
- Kiosk with resources when visitors’ center is closed. Perhaps with large map display of town? (include Alley Poems! as a walking tour along with True Grit tour, art sites around town, etc) Be sure dog leash areas are prominent!
- A panel/station with the skyline looking south identifying the mountains. Can’t remember what you actually see from that location - Baldy, Whitehouse???

INITIAL SITE VISIT NOTES

SITE VISIT (MARCH 28TH, 2019) - NOTES FROM SITE VISIT

Ridgway Heritage Park & Visitor Center
Thursday 3-28-2019 Site Visit
Ridgway, CO

Site Visit Attendees
Walker Christensen
Cammie Willis
Diedra Silbert
Hilary Lewkowitz
Erin (County Fairgrounds)

Visitor Center Building

- Restroom is in the Visitor Center
- The Chamber wants to tear down the building and start over
- Right now it would take so much effort to fix up the existing building that it’s probably not worth it
- Approx. 5 yrs of building life left? What is actual report?
- Visitor Center building is poorly insulated

Railroad Museum

- The Railroad museum is in the Visitor Center for 1 more year; then will move displays, car and ties if desired
 - o Railroad museum is planning on disposing of old railroad ties on site
 - o Could integrate railroad ties into the landscape design; 100 in good shape around corner approaching HWY 550

Site

- Land is owned by town and leased to the chamber
- Road going into Visitor Center parking lot is called Race Course Road
 - o In the center of this road is a natural gas and fiber line; if the road is paved, the utilities would need to be considered. There is not budget at this time to pave the road.
- Pergola by the chamber building needs maintenance; built in 2016-2017
- White railing is the fairgrounds’ lease boundary
 - o People climb under this fence and don’t pay to attend events
 - o Would like a vegetative barrier
- Unkempt “no man’s land” is located on either side of the park
- CDOT ROW is where a T-post fence is off of Hwy 550

Water

- Not much water access on site; pull the irrigation water from the south end of the fairgrounds isn’t feasible.
- Domestic water is located onsite. There is already irrigation at the east side of the site. Maybe this can be extended? Otherwise water would need to be tapped on the west side of the site. Diedra will ask Public Works what the current status of irrigation and maintenance is in this area.
- Any design should have minimum water with grass kept to small sections

Entry Sign

- Entry sign off Hwy 62 for fairgrounds is falling down; built in 60s
 - o Fairgrounds entry off of Hwy 550 has a really nice sign
- Switch to illuminate sign; electric? Ask about power line

INITIAL SITE VISIT NOTES CONTINUED...

SITE VISIT (MARCH 28TH, 2019) - NOTES FROM SITE VISIT CONTINUED...

- Lights in trees? Ask Public Works
- Extension Cords? Ask Public Works
- Current sign location is great but needs to be 2x bigger
- Pivot triangular sign near intersection?
- Aspen Grove by Hwy is nice; would be a good sign backdrop
- Transplant trees in the way of sign viewing?
- Remove trees to south of the sign

Flagpole

- Flagpole=1 light works; 1 doesn't
- Flagpole has 2 plugs and 1 switch

Design Ideas

- Park clean up should be in first phase
- Boulderling feature
- Trees along sidewalk by park
- Parking efficiency=non-paved demarcation methods from Parking Report
- Outdoor photo frame; photo deck (mountain backdrop)
 - o Raised railroad tie area for photo backdrop
 - o 30" ht. or shorter=no railing required
 - o Platform with sign showing a camera
- Other desired features: dog walk, play, restroom; interpretive walk
 - o Paths could play off of Railroad theme; switching (several lanes)
 - o 5 themes of Ridgway could be featured on paths through the park
 - o Solar night lighting on signs
 - o Riverwalk connectivity to park via maps of the bike paths
 - o Could get CTO grant to develop sign content, but no install allowed with this grant
- Historical Elements
 - o Paddy wagon (Ranch History museum) has moved
 - o Could get a featured item from Railroad museum and Ranch history museum to attract people to stop from road; featured park attractions
 - o Raise attractions like the goose up high so are more visible
- Visitor Center
 - o Like the Basalt Railroad Visitor Center
 - o Open up existing building; leave some walls (outdoor pergola structure)
 - o Icy sidewalk on the other side of the building (north side & low spot) by Visitor Center
 - o North wall of Visitor Center should be a mural canvas to attract people into town (temporary fix)
 - o Bathrooms need to be accessible from the outside
 - o Costs less to build new small kiosk than fix up the ex. Visitor Center building
 - o Need more bike racks at Visitor Center
 - o Visitor Center Signage
- Vertical elements on low Visitor Center roof might attract people too
- Signage visibility needs to be looked at
- Would signage mounted on the Visitor Center be okay with CDOT?
- Just match Ridgway's sign code

- View from the gas rest area
- Information sign CDOT to install
- Would alert drivers; guide visitors into the park by letting you know what you are approaching

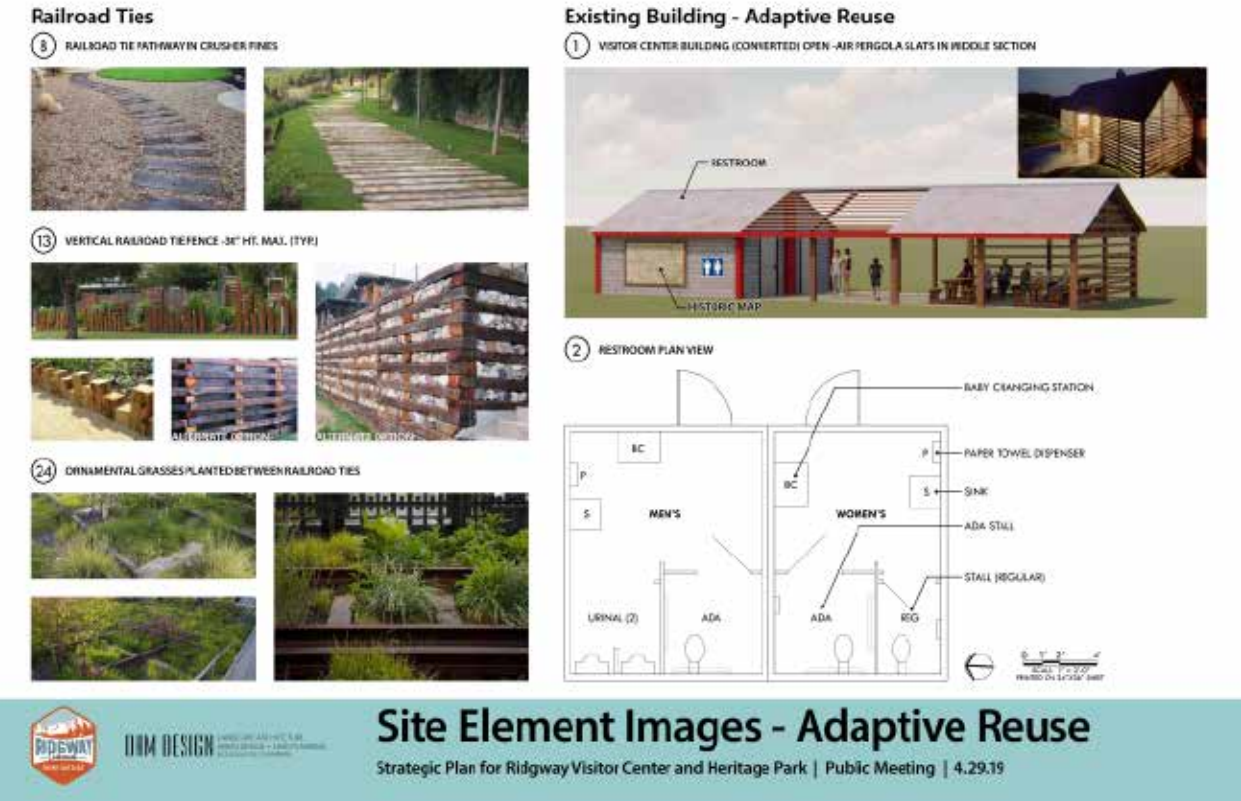
Irrigation

- There is an existing irrigation line to the east side of the park
 - o What is mainline pressure? Ask Steven
- Backflow preventer is required in irrigation systems now; ex. irrigation might not match current codes

*Late April/early May = next meeting date (public meeting to present design option)

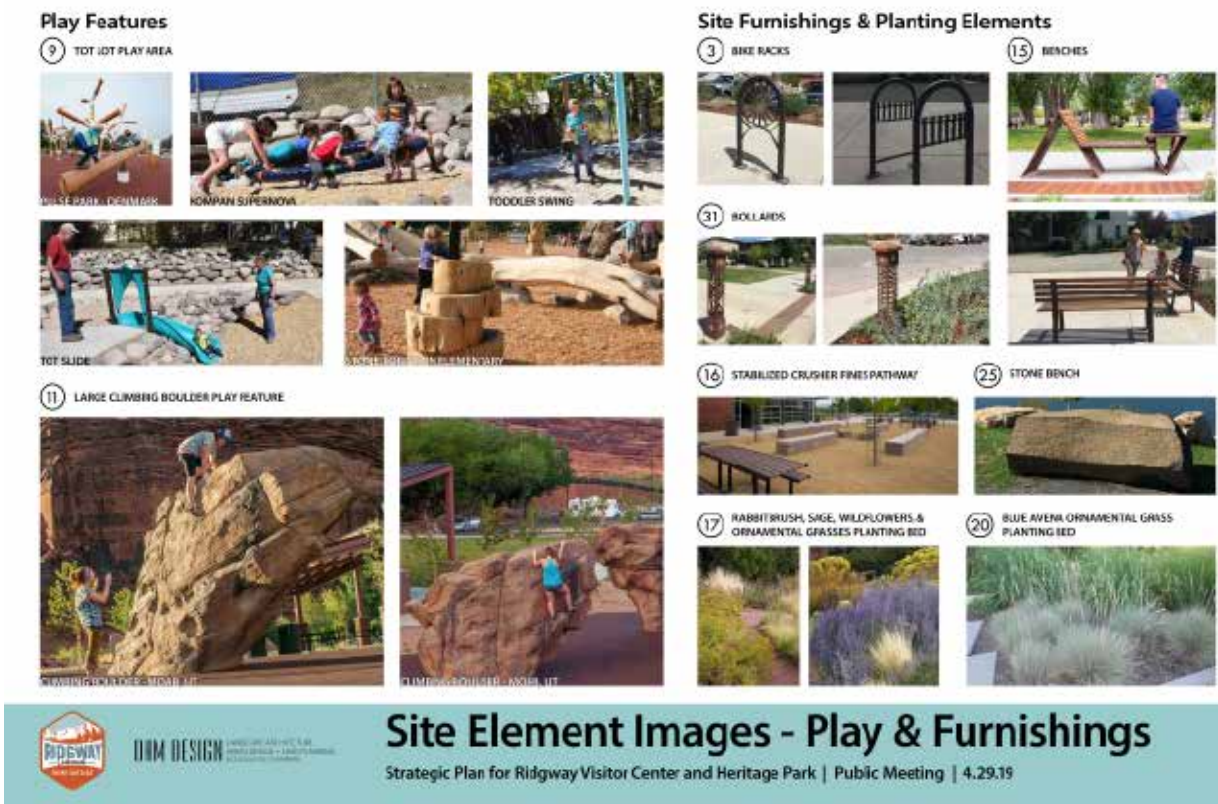
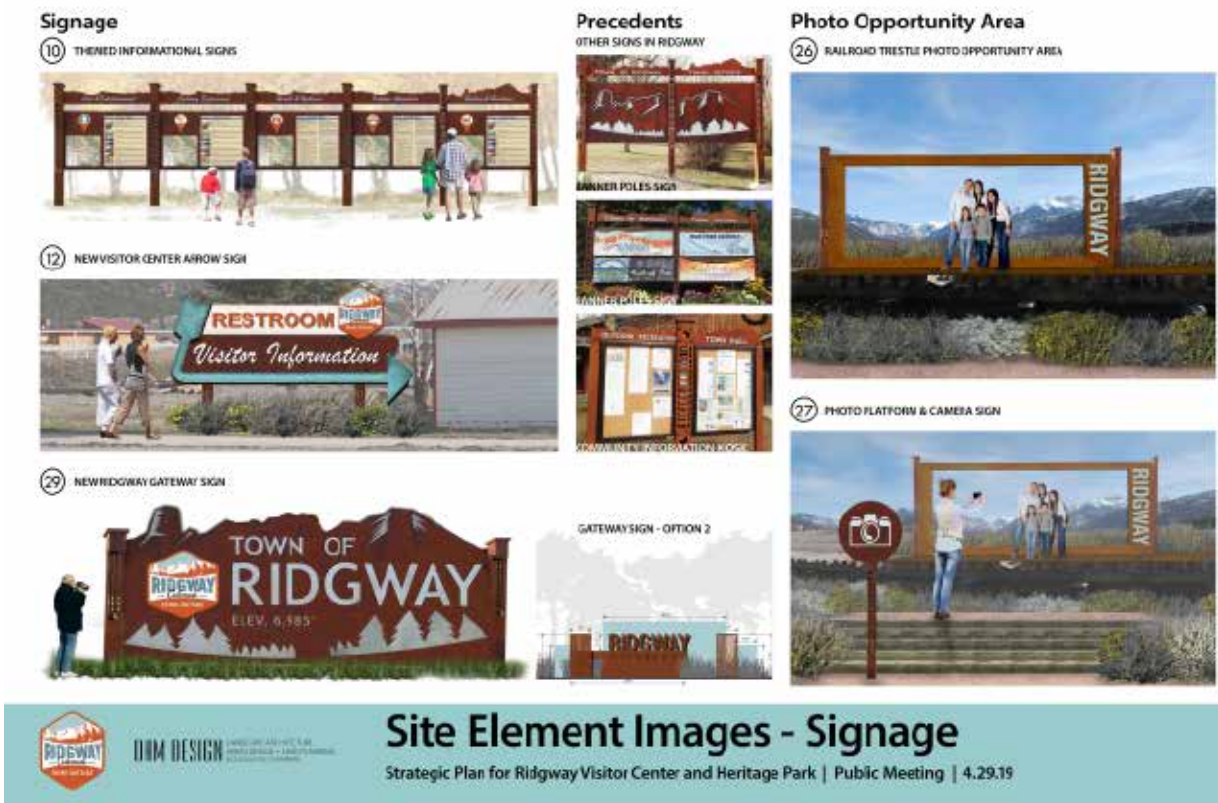
PUBLIC MEETING 2 -PRECEDENTS

PUBLIC MEETING 2 (APRIL 29TH, 2019) - PRECEDENT IMAGE BOARDS



PUBLIC MEETING 2 -PRECEDENTS CONTINUED...

PUBLIC MEETING 2 (APRIL 29TH, 2019) - PRECEDENT IMAGE BOARDS CONTINUED...



PUBLIC MEETING 2 -NOTES

PUBLIC MEETING 2 (APRIL 29TH, 2019) - NOTES FROM PUBLIC MEETING

Monday, April 29, 2019

Ridgway Town Hall

Attendance = 24

Comments:

Visitor Center Building

- Prefer option 2 with new building and location
- Building to be multi-purpose so it can also be used for community space
- 3-D topo map inside to show visitors locations of assets
- Like the storage container with rooftop hang-out area
- Don't like the idea of adapting the old building because the space/location do not feel inviting. Let's just focus on Option 2
- Make sure Option 2 building position ties into the fairgrounds.

Photo Platform and picture frame

- Don't like design but like the concept

Landscaping

- Denver botanical gardens is a good model for ideas

Ute Indian history and culture - ensure that we incorporate the full history of our area which includes the Utes. Education could be included in: landscape (native plants used by Utes), playground, interpretative signs, etc.

5 marketing themes signage

- Ensure a plan to tie in local business advertisement

Parking

- Could we move park and ride because it is not related to town, county or any local non-profits? This would free up more space and resolve our parking issues.
- Annex section of fairgrounds from county/town contract to use for park and ride.
- Let's plan for the removal of park and ride
- Expand bike parking (bike packers) and consider motorcyclists

Management

- Who is responsible for landscaping, cleaning toilets, etc.?

Play space and boulder

- Use all natural materials
- Does the boulder take up too much space?

PUBLIC MEETING 2 -NOTES CONTINUED...

PUBLIC MEETING 2 (APRIL 29TH, 2019) - NOTES FROM PUBLIC MEETING CONTINUED...

Visitor Center:

- Okay with new building overtime, however advocate for architecture that fits our landscape and doesn't look too "Modern"
- Shipping Container was received well, like the idea of roof top seating.
- Size and architecture of Jackson Hole Visitor Center received well.
- Interactive Displays inside center

Signage

- Liked the theme informational sign
- Not a fan of the restroom being as big as Ridgway and Info to much like a 505 diner
- Word "Restroom" too large; put visitor info text on top and the largest text- need a more rustic less "hotel" like sign.
- "New Ridgway Gateway Sign" was well liked.
- Photo Opportunity great idea, frame not so great
- Eliminate frame, put Ridgway on bottom left or right of stage. Love the idea of photo opportunity location.

Play Features

- They do not want plastic features
- Climbing Boulders: Question the value /draw of this item-one form of "play"/activity with so much space devoted to it. Not Sure. Can you find more ranching heritage type boulders and less looking Moab Boulders. Safety was a question as well.

Site Furnishings and Planting Elements

- Liked the idea of bike racks following same look and feel as benches around town.
- Would like dog etiquette signs around town
- Love the light bollards
- Interactive display history of area etc.
- Indigenous knowledge tapped for medicinal/herbal plants – Native Gardens

Railroad Ties

- Love the curves idea
- Don't like the wide ties, it looks like a truck path
- Love plants with railroad ties, planting concepts

Existing Building

- Love the light slates
- Don't want restrooms and eating that close to each other
- Want water fountain and bottle filler.

Proposed Site Plan Option 1 and 2

- I suspect any of the proposed signs are of greater value, so alternately initial landscape and clean up. If boxcar is to stay, refurbish it. Let's get signage in as soon as possible.
- Town needs to plan/buy long term for parking area on East of HGWY 550 for overflow event parking.

EXISTING RIDGWAY SIGNAGE

COMMUNITY INFORMATION KIOSK

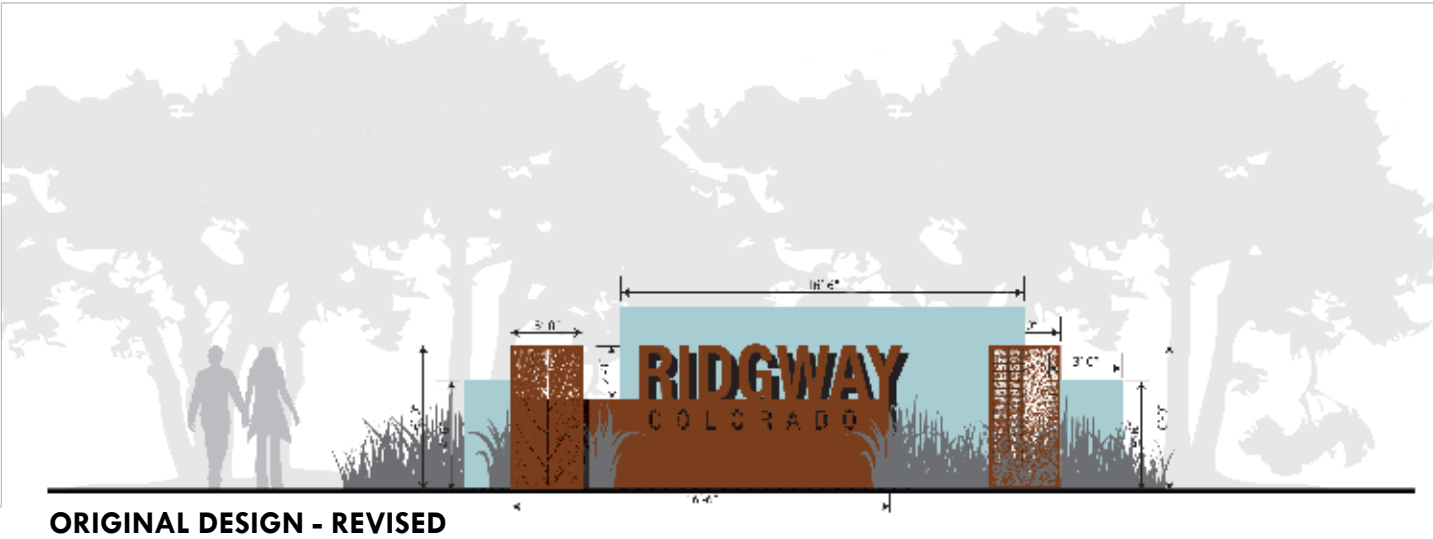
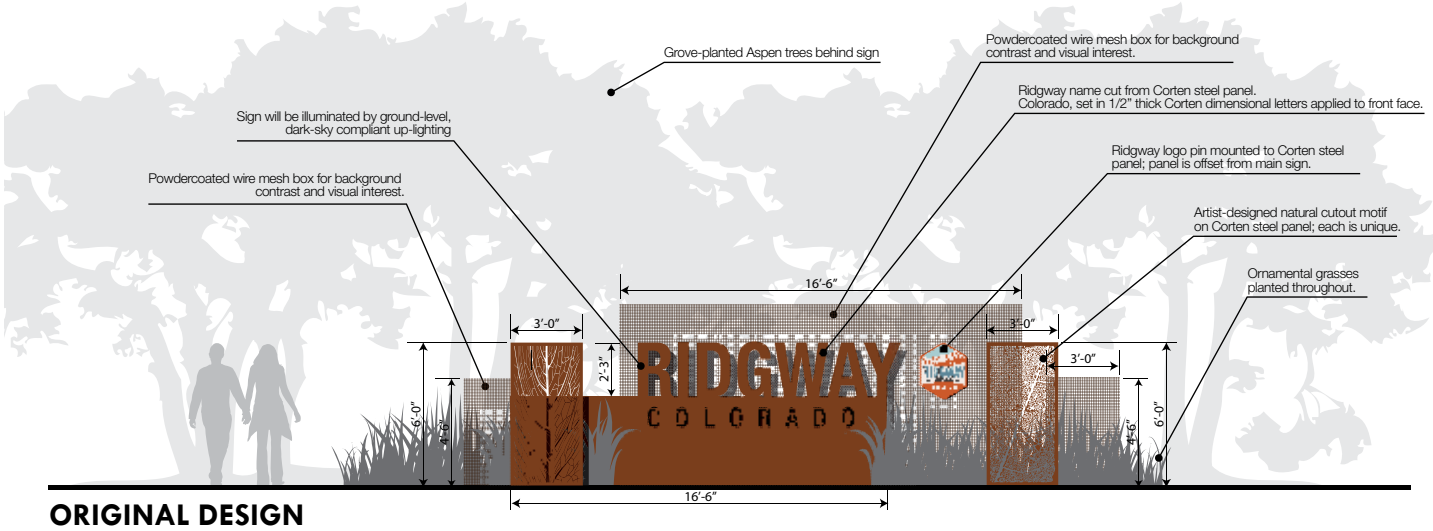


BANNER POLES SIGN

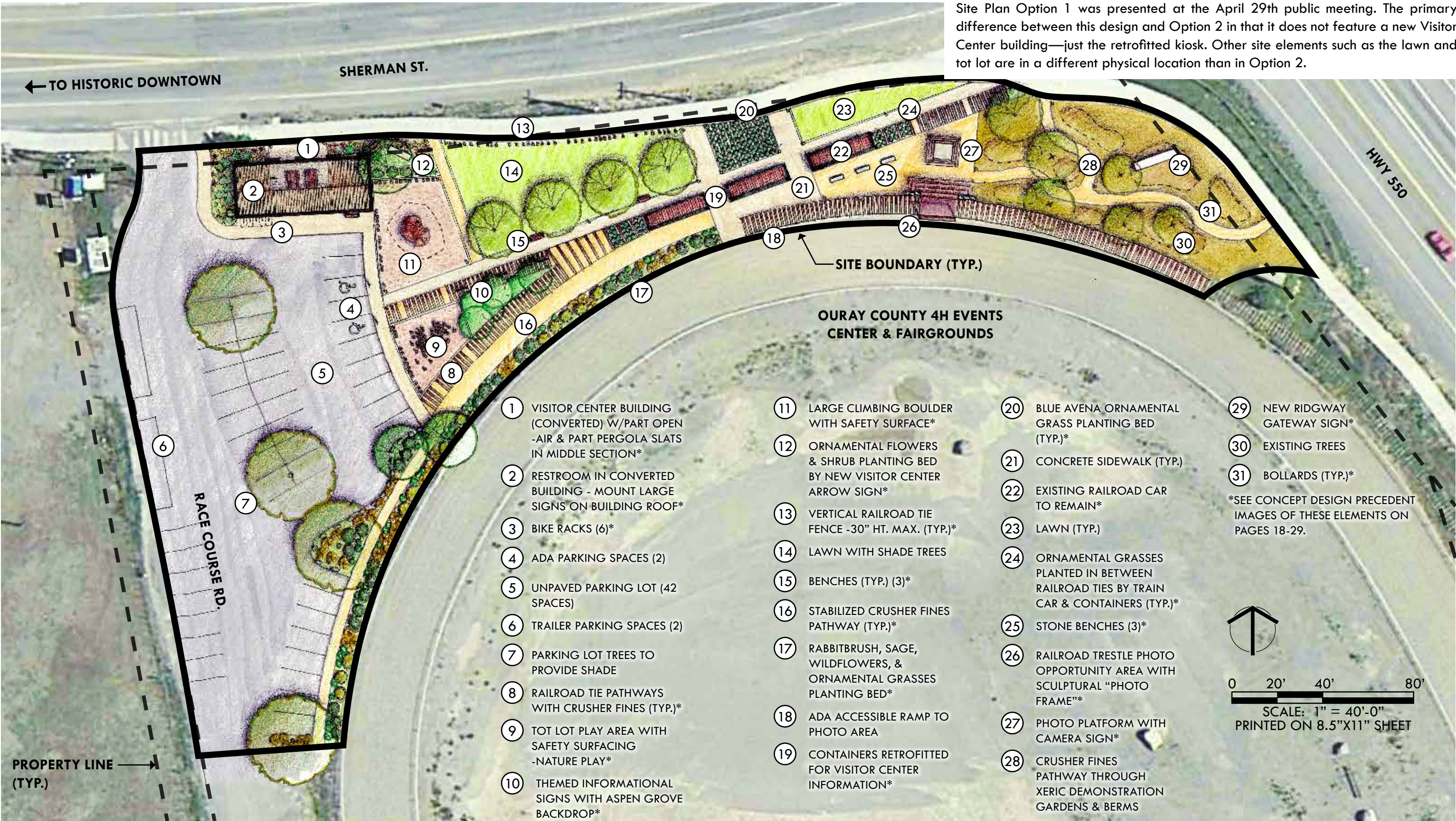


ALTERNATE GATEWAY SIGN OPTION

GATEWAY SIGN OPTIONS FROM THE 2015 RIDGWAY MAIN STREET & CREATIVE DISTRICT SIGNAGE & WAYFINDING PLAN



PROPOSED SITE PLAN - OPTION 1



Agenda Item #5:

Athletic Park Baseball Field Improvements

Chase Jones

From: H <ridgwaycounseling@gmail.com>
Sent: Friday, June 28, 2019 3:28 PM
To: Chase Jones
Cc: Josephine Scoville
Subject: Parks Committee Meeting

Dear Chase,

I would like to follow up on our conversation earlier this summer regarding the Solar Ranch Baseball field. As you know our youth baseball program has over 50 youth participating, the majority live in the Ridgway zip code. Currently only our Tball teams practice in Ridgway due to the condition of the Ridgway Baseball Field.

On Tuesday myself and fellow volunteer Tball coach and parent Josephine Scoville would like to encourage the committee to begin to budget for the development and upkeep of this field. I have had preliminary conversations with a member of the parks and rec committee in Ouray who assists in the maintenance and budgeting of the Baseball field in Ouray. I am awaiting their budget in writing. Without seeing the condition of the Ridgway field this member believes it may take an initial \$8,000-\$10,000 to get the field up to standards and a much smaller budget of \$2,000-\$3,000 annually or every other year to maintain it once it is established with proper soil. I also have a call into Soccer Director Dalton Carver to start talking about sharing the fields with baseball teams. I believe the seasons do not cross dates and if perhaps they did we could still have soccer and baseball going on at the same time.

It is so fun to watch the kids in their baseball uniforms play! We have been obtaining citizen support in the way of signatures to show interest and I am sure if this was put in motion could gather volunteers of all sorts to aid in the development of the field.

I look forward to gathering more details to share with you and look forward to speaking more on Tuesday.

Sincerely,

Helene "H" Discoe
970-318-8537

Sent from [Mail](#) for Windows 10



Agenda Item #6:

Signage at Dennis Weaver Park

Chase Jones

From: Rick Weaver <rweaver2401@gmail.com>
Sent: Wednesday, June 26, 2019 4:39 PM
To: Chase Jones
Subject: Re: Next Parks & Trails Committee Meeting
Attachments: Stagecoach TRail.jpeg

Categories: Parks, Action Item

Please add me on. Attached is a photo of the main StageCoach Trail sign, which caught my attention because of its worn condition. I'll talk further about it at the meeting, I shouldn't take long.

Thanks,

Rick
970-275-8866

On Wed, Jun 26, 2019 at 2:50 PM Chase Jones <cjones@town.ridgway.co.us> wrote:

Hi Rick,

The next Parks Committee meeting is this Tuesday, July 2nd at 6pm. It's looking to be one of their longer agendas but I can add you on. If you have pictures or anything else you'd like to share I need it before Friday (6/28) morning (~9am) to include in the packet.

Thanks,

Chase

From: Rick Weaver <rweaver2401@gmail.com>
Sent: Wednesday, June 26, 2019 11:01 AM
To: Chase Jones <cjones@town.ridgway.co.us>
Subject: Next Parks & Trails Committee Meeting

Chase -- can you tell me when the next meeting is? If I'm in town I'd like to be put on the agenda to discuss the deteriorating wood trail signs in the Dennis Weaver Memorial Park.

Thanks,

Rick Weaver

RiverSage LLC

DENNIS WEAVER PARK
STAGECOACH TRAIL

TO

SCENIC LOOPS .3 MI

EAGLE ALLEY .4 MI

BOOT HILL SUMMIT 1 MI



THIS PARK IS A WILDLIFE CORRIDOR
PLEASE...STAY ON TRAILS
USE AT YOUR OWN RISK
LEASH AND CLEAN UP AFTER DOGS

THANKS!

Agenda Item #7:

Permanent water bowl for dogs at the Athletic Park

Chase Jones

From: Vicki Hawse <vickihawse@gmail.com>
Sent: Friday, June 28, 2019 11:04 AM
To: Chase Jones
Subject: Re: Water for Dogs

Vicki Hawse

vickihawse@gmail.com

Here are the photos Chase,

The idea is to build a cement basin beneath the existing fountain with a water source to fill it. Thanks,



On Jun 28, 2019, at 10:40 AM, Chase Jones <cjones@town.ridgway.co.us> wrote:

Morning Vicki,

Great thank you, I will look for the photos/examples shortly. The meeting starts at 6pm Tuesday July 2nd in Town Hall. There will be topics and requests in front of you on the agenda so if you're a little late you should be fine. I can email you the agenda this afternoon.

Best,
Chase

From: Vicki Hawse <vickihawse@gmail.com>
Sent: Friday, June 28, 2019 10:32 AM
To: Chase Jones <cjones@town.ridgway.co.us>
Subject: Re: Water for Dogs

Hi Chade,

So sorry, I just got this. I will go down right now to get you some photos.

I finish work on the 2nd at 5:30, what time is the meeting?

Will send pics ASAP

Much gratitude,

Agenda Item #8:

Athletic Park - Pavilion Donation



Staff Report

Regarding: Athletic Park Pavilion Donation

Written by: Chase Jones

Date: June 28, 2019

Background

An anonymous donor has offered to fund or partially fund a pavilion or similar structure at the Athletic Park. The donor has offered to donate \$200,000 to the project with an additional \$100,000 available in matching funds. Matching funds can be a mixture of in-kind work, Town cash and community fundraising. This means if \$100,000 was raised the total project budget would be \$400,000. The donor would like to see community involvement and is hoping to see the majority of fundraising originate from the various user groups. Having the project completed as soon as possible is also a priority for the donor.

Current State of Project

After being approached by the donor, Town staff held a stakeholder meeting on June 18th, 2019. The purpose of this meeting was to ensure there was an interest for a pavilion or similar building in our Athletic Park. The following initial stakeholders were identified and invited to this initial meeting.

- Ouray County Soccer Association
- Solar Ranch HOAs
- Pickleball club
- Neighbors
- Baseball
- Ridgway Area Trails
- Skatepark
- Parks, Trails and Open Space Committee

During the meeting there was significant interest in this project and most, if not all, of the stakeholders who attended seemed to be willing to help with fundraising. Additionally, a project of this nature has been identified as a long-term goal on the Town's CIP plan.

There are no plans or conceptual drawings at this point of the process. Staff's next step is to develop a questionnaire to distribute and gather input. This community input will help to prioritize amenities and build a framework for the project moving forward. The Parks Committee will be receiving these questions by email shortly. The committee will be asked additional questions in this initial stage as well. Overall, this is still very early in the process but there appears to be great interest and excitement to move forward with.