



Many Ridgway area residents, parents, students, elected and appointed officials and local government employees deserve great thanks and credit for the development and completion of this plan, the process for which began in March 2014. This plan was completed entirely from start to finish by community volunteers and local government employees. For this significant gratitude is extended to members of the Green Street Stakeholders Team:

Adam Johnson  
Ashley Slater  
Chris Lance  
Danelle Norman  
Don Rogers  
Doug Canright  
Thomas Emilson

Eric Johnson  
Heather Hart  
Jared Coburn  
Kellie Day  
Kris Holstrom  
Lois Ziemann

Matt Hepp  
Nick Williams  
Paula Ashmead  
Ned Bosworth  
Rick Weaver  
Stephanie Wallin

Particular recognition goes to the Parks Committee for recognizing the need for this plan, Ned Bosworth and Jen Coates who gathered and presented information to the Stakeholders Team and Ridgway Community to inform the plan development process and identification of key opportunities.

## **TABLE OF CONTENTS**

### **I. INTRODUCTION**

- A. Plan Purpose
- B. Background Information and History
- C. Location Map

### **II. COMMUNITY INPUTS AND PRIORITIES**

- A. Summary of Inputs: Park Vision and Amenities
- B. Green Street Park Final Concept Map
- C. Phasing Priorities

### **III. EXHIBITS**

- A. Public Meeting #1: Draft Maps and Summary of Inputs and Outcomes
- B. Public Meeting #2: Draft Concept Map
- C. Parks Committee Meeting: Draft Concept Map
- D. Youth Inputs and Youth Concept Maps

## **I. INTRODUCTION**

### **A. Plan Purpose**

This plan was developed over nearly one year, beginning with a Parks Committee Subgroup meeting in March 2014 to identify a process for developing the plan. It progressed to a stakeholder meeting in July 2014 and continuing through 2 public meetings and 4 committee meetings in the summer and fall of 2014.

This plan was developed to understand and identify the overall purpose and function of the park focused on community inputs and desires, and then targeting short and long term objectives and actions for the Ridgway community in developing the active park space.

This plan is developed to inform and guide the appropriate and desired development of this valuable community park.

### **B. Background Information and History**

The Green Street Park is considered a “Community Park”, defined in the Town’s Parks Master Plan as a space that is “usually between five and fifty acres, designed primarily with open areas, playgrounds, trails restrooms and other public amenities.” Community parks are focal points for the community, providing common meeting places and higher-intensity usage than smaller neighborhood parks. These parks are generally diverse in nature, but are also designed for high-intensity uses such as ball fields. Since these parks attract a large number of people, they require easy access and extensive parking facilities. Community parks require a high degree of planning and management.

General site conditions observed in developing this plan are as follows:

- The soil is very alkaline and compacted clay, creating a challenging environment for tree growth;
- Cankers on some of the trees indicate that have lacked water in the past;
- Significant animal damage to the trees prompted replacement of a number of trees in 2014;
- There is an active irrigation ditch along the western aspect of the park and a larger drainage along the southern aspect, and a smaller irrigation drainage along the northeastern aspect;
- Significant Canadian Thistle is present along the western ditch and there are some noxious weeds present in other areas of the park;
- Sidewalk and trees are present along the eastern aspect of the park, along Green Street;
- Excellent view corridors exist to the south and east;
- The park is directly adjacent to the Ridgway Secondary School and abuts a large residential neighborhood;
- The park site is long and narrow with a small adjoining open space and drainage area across Green Street to the east.

### C. Location Map and Site Conditions







## II. COMMUNITY INPUTS AND PRIORITIES

### A. Summary of Inputs: Park Vision and Amenities

This chart of character, amenities, activities and features was based on community inputs from the first public meeting and presented to the Committee and public during the October 2<sup>nd</sup>, 2014 public meeting. The items not crossed out in red were identified as the priorities for the park:

GREEN STREET PARK			
CHARACTER	AMENITIES	ACTIVITIES	FEATURES
<ul style="list-style-type: none"> <li>• COST EFFECTIVE AND LOW MAINT.</li> <li>• SUSTAINABILITY</li> <li>• FLEXABILITY, DESIGNED TO EVOLVE</li> <li>• RUSTIC / NATURAL</li> <li>• INDIVIDUALITY</li> </ul>	<ul style="list-style-type: none"> <li>• SHADE</li> <li>• PATHS / SEATING</li> <li>• <del>FIRE PIT</del></li> <li>• BBQ, PKNICKS, GATHERINGS</li> <li>• COVERED USE AREAS</li> <li>• RESTROOMS</li> <li>• PARKING</li> <li>• ART BIKE RACKS</li> <li>• PLAY EQUIP.</li> <li>• TREE HOUSE FORT</li> <li>• <del>POD TO METHANE</del></li> <li>• SOLAR LIGHTING</li> <li>- Shade structure</li> </ul>	<ul style="list-style-type: none"> <li>• <del>FREEBEE GOLF</del></li> <li>• <del>VOLLEY BALL</del></li> <li>• FREE PLAY</li> <li>• <del>BALL COURT</del></li> <li>• BOULDERING</li> <li>• CREATIVE PLAY</li> <li>• <del>OCTABALL</del></li> <li>• <del>ICE SKATE</del></li> <li>• <del>CROSS COUNTRY SKI</del></li> <li>• <del>WINTER ACTIVITIES</del></li> <li>• SLACK LINES</li> <li>• INTERACTIVE STRUCTURE</li> <li>• PLAY EQUIP.</li> <li>• CROQUET AND LAWN SPORTS</li> <li>• BEE HIVES</li> <li>→ in garden enclosed</li> </ul>	<ul style="list-style-type: none"> <li>• EDUCATIONAL CONN. TO SCHOOL: ORCHARD, NATIVE CULT. HORTICULTURE, WATER-SHED, GROW HOME</li> <li>• COMMUNITY GARDEN</li> <li>• PROMOTE CIRCULATION</li> <li>• WIND BREAK</li> <li>• RIPARIAN DEVEL.</li> <li>• ATTRACT BIRD, BUTTERFLY, ETC.</li> <li>• WILD ANIMAL FRIENDLY</li> <li>• <del>POD PARK</del></li> <li>• REALIGN CHANNEL</li> <li>• HIGH AND DRY</li> <li>• PERMACULTURE</li> <li>• <del>COMPOSTING AND RECYCLING</del></li> <li>→ in garden slow traffic</li> </ul>

More specific conversation about these concepts revealed the following priorities:

**Park Theme** – the overall “theme” of the park should be natural with areas of active use that do not duplicate other park amenities within the town; Educational components should be incorporated throughout the park.

**Community Garden** – there is significant support for a community garden in this location; the details and specifics of the garden, including relationship with the Town, need to be determined through a separate process; understanding water demands and the origin(s) of the water use (potable, non-potable, irrigation water, etc.) will be key.

**Play Equipment** – should be natural and not be contrived in appearance; play areas should be free-form and fit in with the natural theme.

**High and Dry Garden Elements** – this is a key aspect for the long term sustainability of the vegetation in this park, including the area surrounding and within the community garden.

**Parking** – parking should be appropriate for the park and various uses but not consumptive of available park space.

**Lighting** – low impact pedestrian level lighting along defined pathways and the restroom and shed facility per the town lighting plan.

**Irrigation Ditch** – proposed meandering but may not be possible for maintenance and uses of the ditch; there was and expressed desire for a meandering water feature but may be complicated by active irrigation and maintenance of the ditch; water rights and existing uses will need to be addressed in the future when improvements are imminent. The area around the irrigation ditch to the west of the property is planned to be a more “naturalized” area.

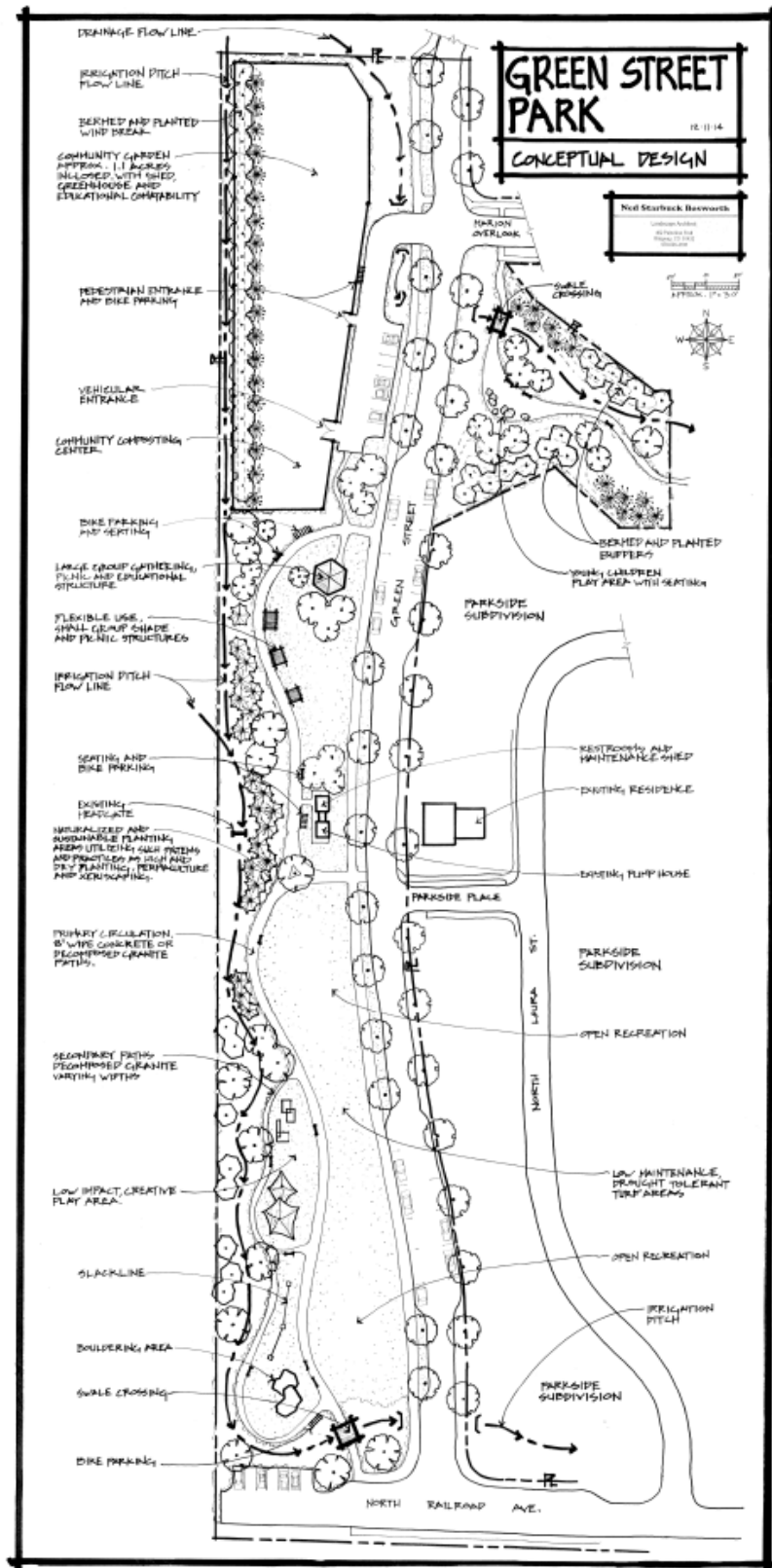
**Small Pavilion Areas** – informal gathering spaces are preferred over “fixed” gazebos or formal covered shade areas; built-in flexibility for various users and uses is desired;

**Central Gazebo / Shelter Area** – a large center space is desired to accommodate a variety of uses and needs.

**Walkways and Pathways: Sidewalk Connections and Crosswalks** – these need to be planned to insure good and appropriate connectivity and safe road crossings; considerations need to be made for the open space area east of Green Street and connectivity into River Park and the surrounding areas; in particular, the potential for a pedestrian pathway branching off the main path of the open space area to the south toward Green Street and then a crossing across Green Street to meet up with sidewalk in the Park just south of the community garden area is important. Surfaces may vary and be hard surfaced (concrete) or permeable walkways or a combination of primary walks and secondary walks with various surface materials.

**Wind Breaks** – these opportunities are key for this park location, in particular with the Community Garden area.

## B. Green Street Park Final Concept Map



C. Phasing Priorities:

i. Shorter Term Priorities

The following top priorities, in no particular order, were identified at the December 2<sup>nd</sup>, 2014 meeting:

*Community garden- starting with understanding the needs and structure of the organization and the relationship with the Town for using public property, establishing an agreement for the use; understanding the needs of the organization on the ground (access to the site, water, fencing and composting and the financing of those improvements); coordination can be through the Parks Committee*

*Fencing - Define the area of the community garden with fencing and starting the composting;*

*Tree plantings;*

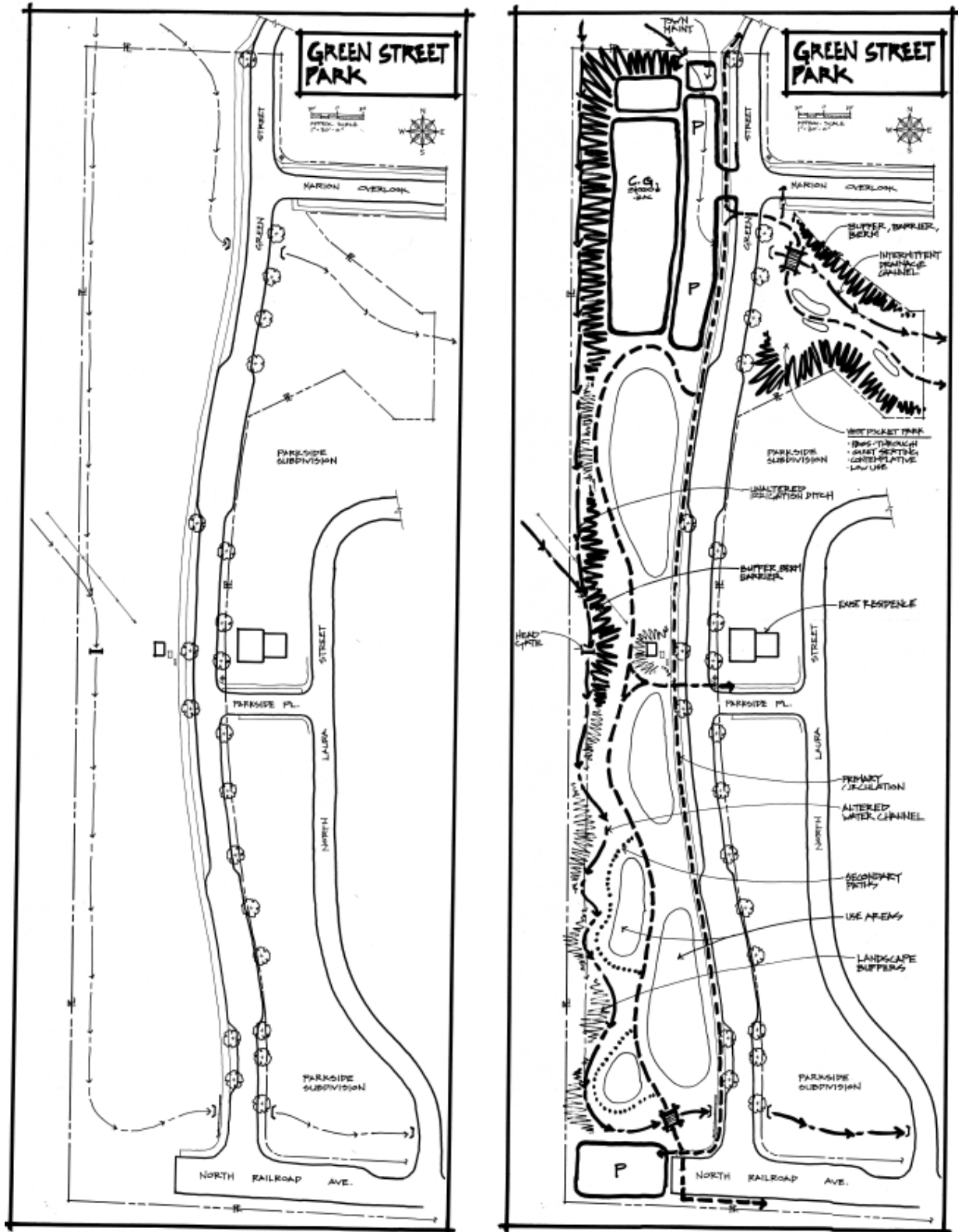
*Access and Parking;*

*Pedestrian and bicycle accesses and pathways;*

*Restroom facility.*

### III. EXHIBITS:

#### A. Public Meeting #1: Draft Maps and Summary of Inputs and Outcomes (August 28<sup>th</sup>, 2014)



August 28, 2014 - Public Inputs and Park Direction:

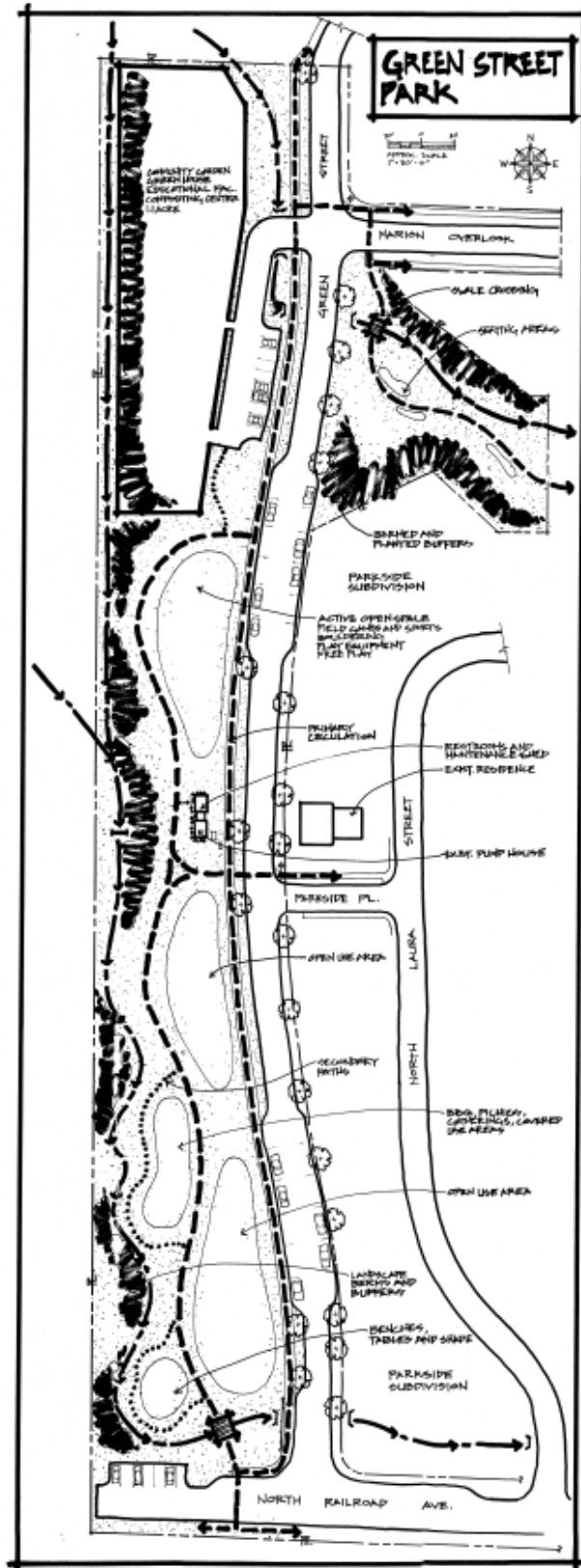
- *Natural park theme*
- *Innovative*
- *Creative/ artistic*
- *Unique*
- *Organic*
- *High dry*
- *CSU design garden*
- *Low maintenance*
- *Interactive Educational Living park*
- *naturally contrived*
- *Connectivity throughout/ linkages*
- *Creative play spaces*
- *Relaxing place to hang out*
- *Community Garden*

*Chris Lance and Ned Bosworth will communicate with Yvette Henson of the CSU Extension office regarding a CSU high and dry design garden. Danelle and Jen will connect with the Ridgway School District to solicit youth input on the project plan.*

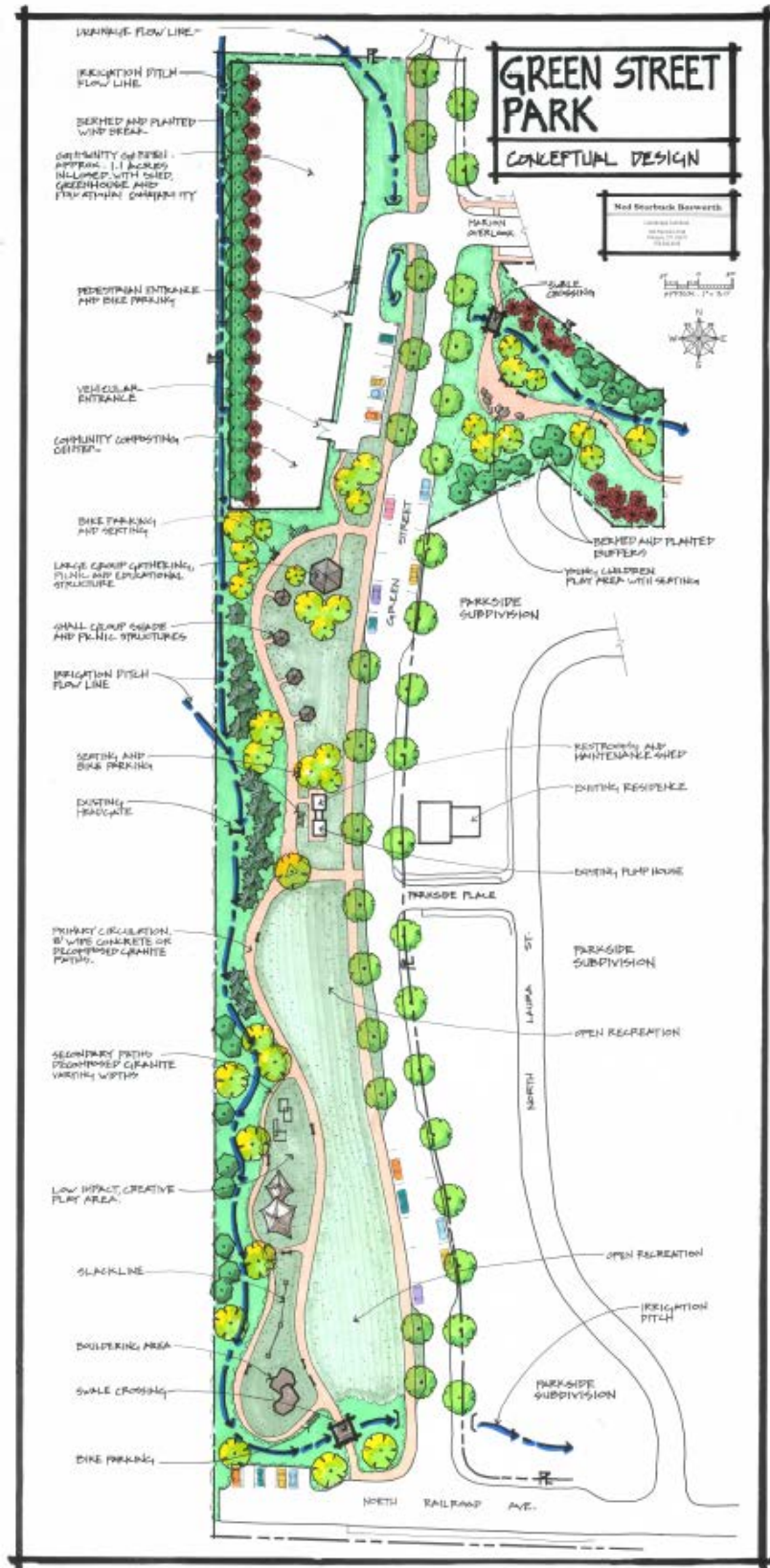
- *Provide buffering for garden areas*
- *Protect the wind coming from the southwest into the park*
- *Irrigation ditch needs maintained and storage of spoils need accommodated, considerations on how meandering happens need addressed*
- *The extent of the piping and undergrounding of the drainage from the northeast aspect of the park area to Green Street needs additional consideration including but not limited to design, installation and maintenance costs, engineering, etc.*
- *Reduce parking site size and move to the south away from the northeast drainage area, potentially wrap the parking around if possible*
- *Show parking on the street on the plan (est. at 20 total along both sides of Green Street)*
- *Addition of restroom facility centrally located in the park near the existing pump house, and relocate the maintenance shed to this same location*
- *Add bike rack areas throughout*
- *Future parking location at the end of RR St is planned to be a future street connection, so needs to be labeled as temporary or moved into the property as off street parking*
- *Keep meandering foot path throughout*
- *Areas indicated on map in red and green color for berming / landscape areas be specified as a "High and Dry garden" on the concept plan*
- *Maintain organic theme of natural park – not as a "sports park"*
- *Add fence and orchard to community garden area*
- *Character: Cost Effective, Low Maintenance, Flexibility, Designed for evolution, Rustic/natural, individuality*
- *Amenities: Shade, Paths, Seating, BBQ, Picnics, Gatherings, Covered use areas, Restrooms, Parking, Art bike racks, Play equipment, Solar lighting*

- *Activities: Free Play, Bouldering/Slack Lines, Creative Play, Play Equipment, Croquet and Lawn Sports, bee hives (incorporated into the community garden)*
- *Features: Educational connection to school (orchard, native horticulture, watershed, grow dome), Community garden, Promote circulation, Windbreak, Riparian development, Attract birds and butterflies, Wild Animals are ok, Realignment of channel (as possible), High and Dry, Permaculture, Composting (included in the community garden).*

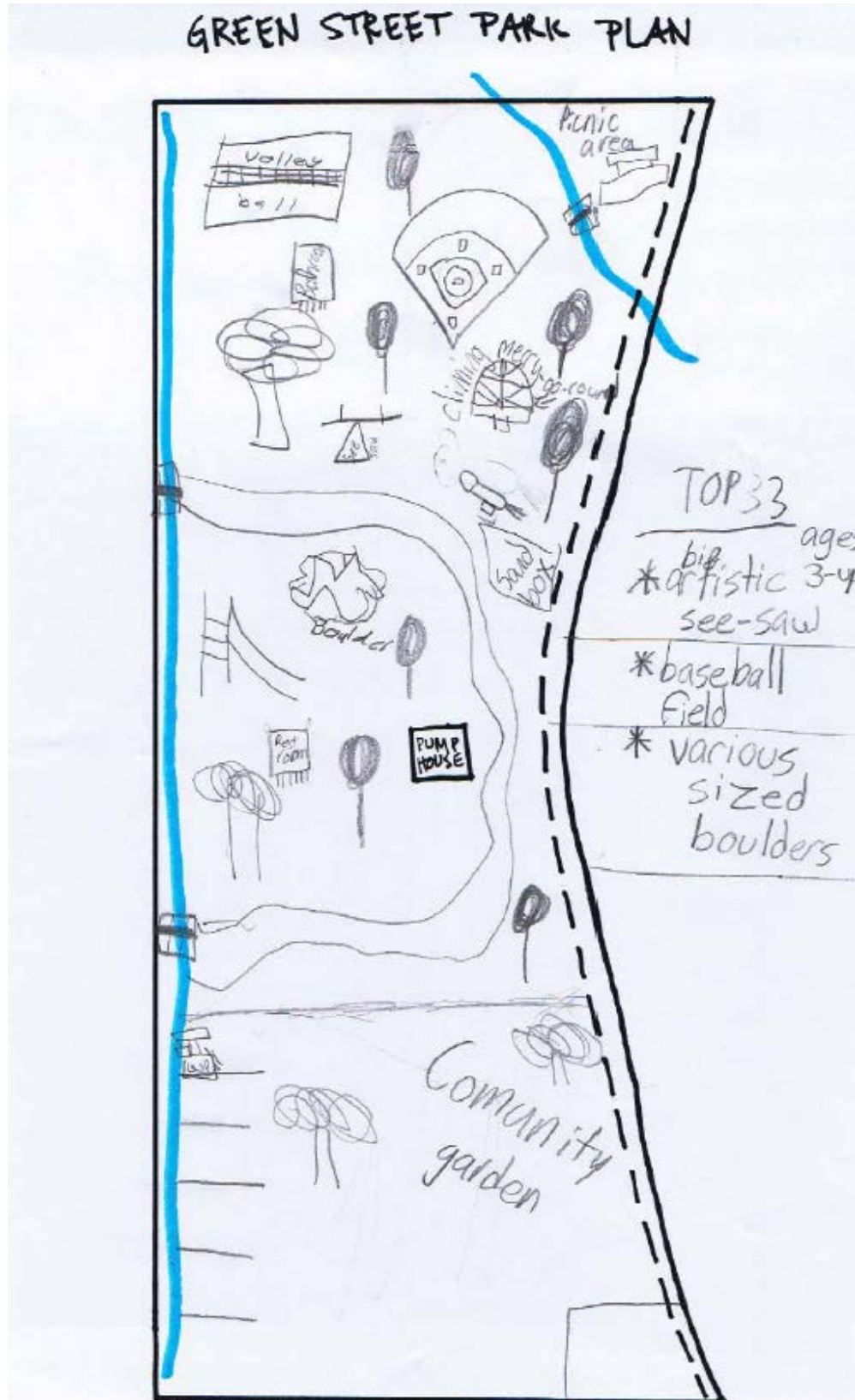
## B. Public Meeting #2: Draft Concept Map (October 2<sup>nd</sup>, 2014)



C. Parks Committee Meeting: Draft Concept Map (December 2<sup>nd</sup>, 2014)



D. Youth Inputs and Concept Maps (October 8<sup>th</sup>, 2014)



# GREEN STREET PARK PLAN



bathroom  
water fountain  
trash can

# GREEN STREET PARK PLAN



bathroom  
water fountain  
trash can

# GREEN STREET PARK PLAN

